







- ▶ **Beautifully Presented Four Bedroom Executive Home**
- ▶ **Stylish Open Plan Kitchen / Dining / Family Room**
- ▶ **Four Double Bedrooms**
- ▶ **Extensive Landscaped Rear Garden With Views Across Golf Course**
- ▶ **Light & Spacious Entrance Hall**
- ▶ **Utility Room & Study**
- ▶ **Modern En-suite & Family Bathroom**
- ▶ **Remodelled to A High Standard**
- ▶ **Requested Location**

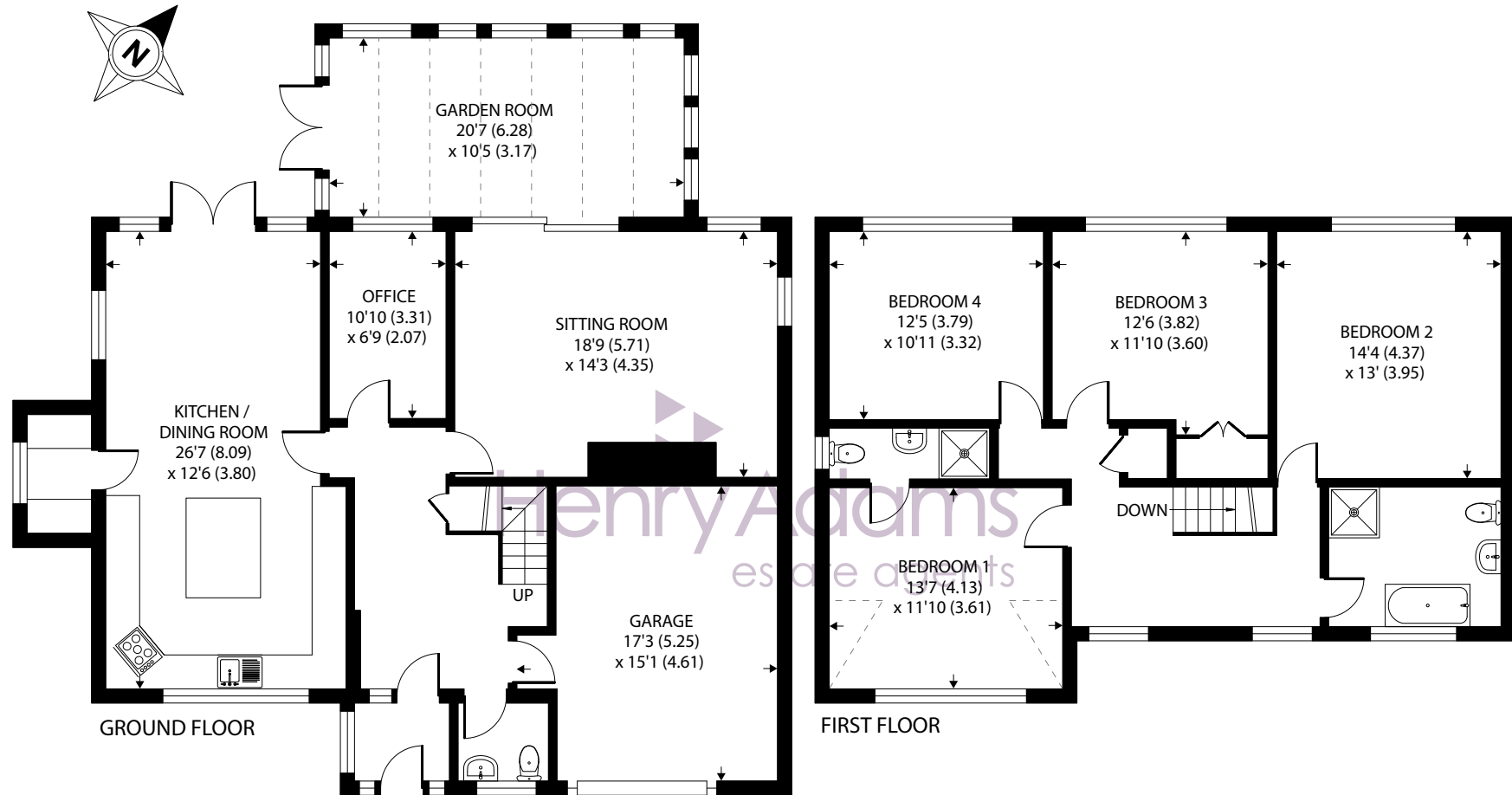
Situated in a sought-after location, this beautifully presented four-bedroom executive home offers the perfect blend of contemporary design and practical living. The property boasts a light and spacious entrance hall leading to a stylish open-plan kitchen, dining, and family room - ideal for both entertaining guests and every-day family life. The garden room provides a tranquil retreat with views across the extensive landscaped rear garden that stretches towards the neighbouring golf course. Additionally, the property features a utility room and study for added convenience.

Upstairs, the four double bedrooms offer ample space for relaxation, with bedroom one benefiting from a modern en-suite bathroom. A further family bathroom ensures that there is no shortage of luxury in this stunning property. The outdoor space is equally impressive, with the landscaped garden providing a serene escape and direct access to the golf course beyond. The property also includes a double garage and a driveway that can accommodate multiple vehicles, making parking a breeze. Remodelled to a high standard, this home is a true masterpiece that exudes sophistication and elegance, perfect for those seeking a prestigious lifestyle in a tranquil setting. An early viewing is advised so you can truly appreciate the versatile accommodation and idyllic location this home has to offer.









14 Redhill Road, Rowland's Castle

Approximate Area = 2110 sq ft / 196 sq m

Limited Use Area(s) = 16 sq ft / 1.4 sq m

Garage = 227 sq ft / 21 sq m

Total = 2353 sq ft / 218.4 sq m

For identification only - Not to scale



Floor plan produced in accordance with RICS Property Measurement Standards incorporating International Property Measurement Standards (IPMS2 Residential). © nche.com 2024. Produced for Henry Adams. REF: 1158777

Agents Note - Our particulars are for guidance only and are intended to give a fair overall summary of the property. They do not form part of any contract or offer, and should not be relied upon as a statement or representation of fact. Measurements, areas and distances are approximate only. Photographs may include lifestyle shots and pictures of local views. No undertaking is given as to the structural condition of the property, or any necessary consents or the operating ability or efficiency of any service, system or appliance. Please ask if you would like further information, especially before you travel to the property.

Situation

The village of Rowlands Castle lies on the edge of the South Downs National Park in Southern Hampshire, 9 miles south of Petersfield and on the border with West Sussex. It is a quiet residential village, with four pubs and a few small shops, including a hardware store. The renowned Rowlands Castle village green and golf course are a short walk away. Rowlands Castle station is on the London Waterloo to Portsmouth line.

23rd July 2024



