



Flat 7 Ravenwood Court, Aldwick Street

Top floor apartment situated in Aldwick within walking distance to local shopping facilities and the beach.



- ▶ **Top Floor Apartment**
- ▶ **Dual Aspect Sitting/Dining Room**
- ▶ **Dual Aspect Double Bedroom**
- ▶ **Wet Room Style Shower Room**
- ▶ **Communal Gardens**
- ▶ **Spacious Hallway**
- ▶ **Fitted Kitchen**
- ▶ **Second Bedroom**
- ▶ **Separate WC**
- ▶ **Allocated and Visitor Parking**

A spacious top floor apartment situated in a quiet location in Aldwick, within walking distance to the beach and Rose Green village shops.

The accommodation briefly comprises, communal entrance with stairs to all floors. The personal front door opens onto a spacious hallway with ample storage. The dual aspect sitting/dining room overlooks the communal garden and parking area. There are double doors opening into the kitchen with built-in cooker, hob and space for white goods. The principal bedroom is dual aspect and there is a second bedroom. The disabled wet room style shower room has a wash hand basin and there is a separate WC.

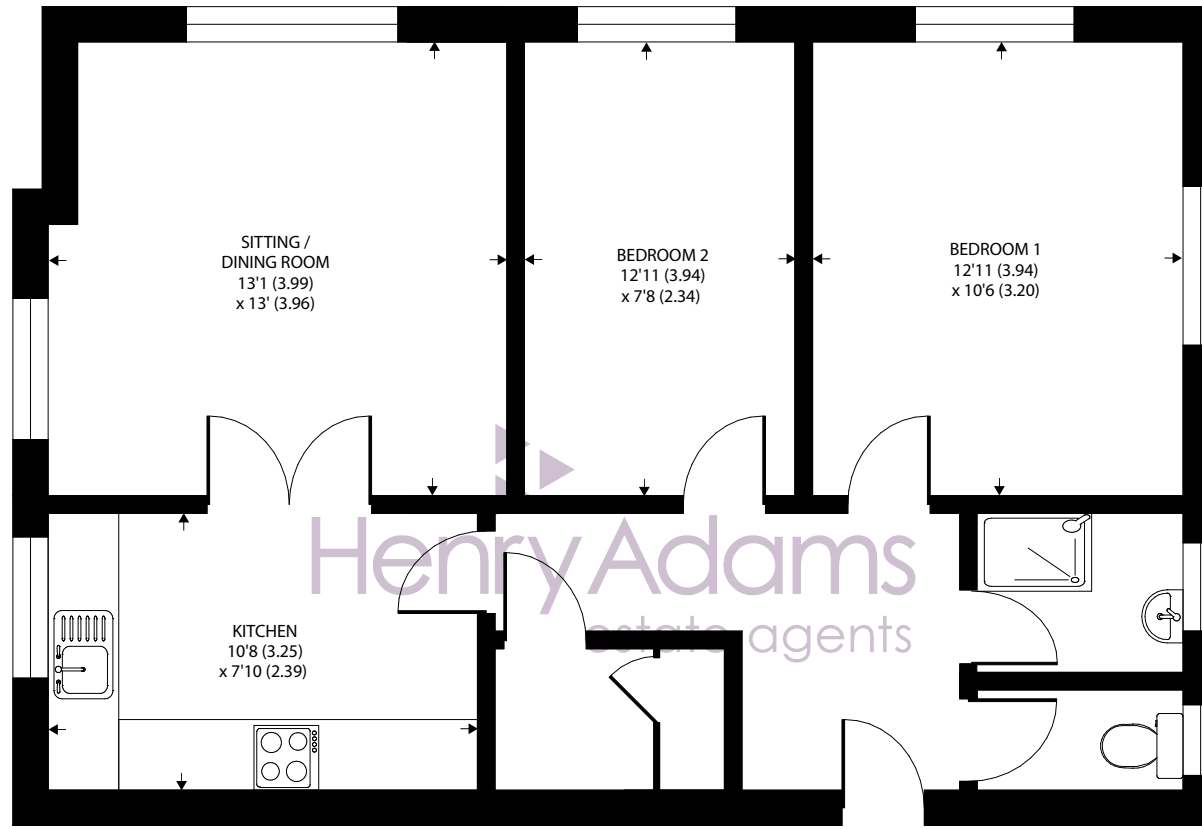
Outside, there are communal gardens, allocated parking spaces and visitor parking.

Tenure: We understand there is a 999 year lease from 1988.

Maintenance Charge: We understand the maintenance charge is approximately £1,400 p.a.

Council Tax Band: C





SECOND FLOOR

Approximate Area = 676 sq ft / 62.8 sq m

For identification only - Not to scale



Agents Note - Our particulars are for guidance only and are intended to give a fair overall summary of the property. They do not form part of any contract or offer, and should not be relied upon as a statement or representation of fact. Measurements, areas and distances are approximate only. Photographs may include lifestyle shots and pictures of local views. No undertaking is given as to the structural condition of the property, or any necessary consents or the operating ability or efficiency of any service, system or appliance. Please ask if you would like further information, especially before you travel to the property.

Location

The property is located approximately two miles west of the seaside town of Bognor Regis. There is a parade of shops and a One Stop situated just outside Ravenwood Court on Aldwick Street. The village of Rose Green is within walking distance with a comprehensive range of facilities, doctor's surgery and library.

What3Words ///quest.latest.urgent

25/07/24

