

oakheart

£875,000

Guide Price  
Ixworth Road, Norton

GROVEBURY  
HOUSE

**\*\* Guide Price £875,000 - £925,000 \*\*** Located in the charming village of Norton, Suffolk, this impressive detached family home offers an abundance of space, versatility, and future potential. With four generously-sized bedrooms, a large family room that could easily serve as a fifth bedroom, and a self-contained detached annexe, the property caters to a variety of living arrangements. Whether you need additional space for extended family, guests, or even as a rental opportunity, this home provides the perfect solution.

The heart of the home is the open-plan kitchen and dining area, offering a bright, airy space ideal for family meals and entertaining.

The spacious utility room provides plenty of additional storage and space for appliances, helping to keep the main living areas clutter-free. A comfortable first-floor lounge, complete with two private balconies, offers stunning field views to both the front and rear of the property, allowing you to enjoy the tranquil countryside setting.

The ground floor features a family room that can be easily adapted to your needs, whether that's as a fifth bedroom, a home office, or a playroom. There's also a ground floor bathroom, with an additional shower room, while the first floor provides a convenient shower room as well as an en-suite to the master bedroom, ensuring there's

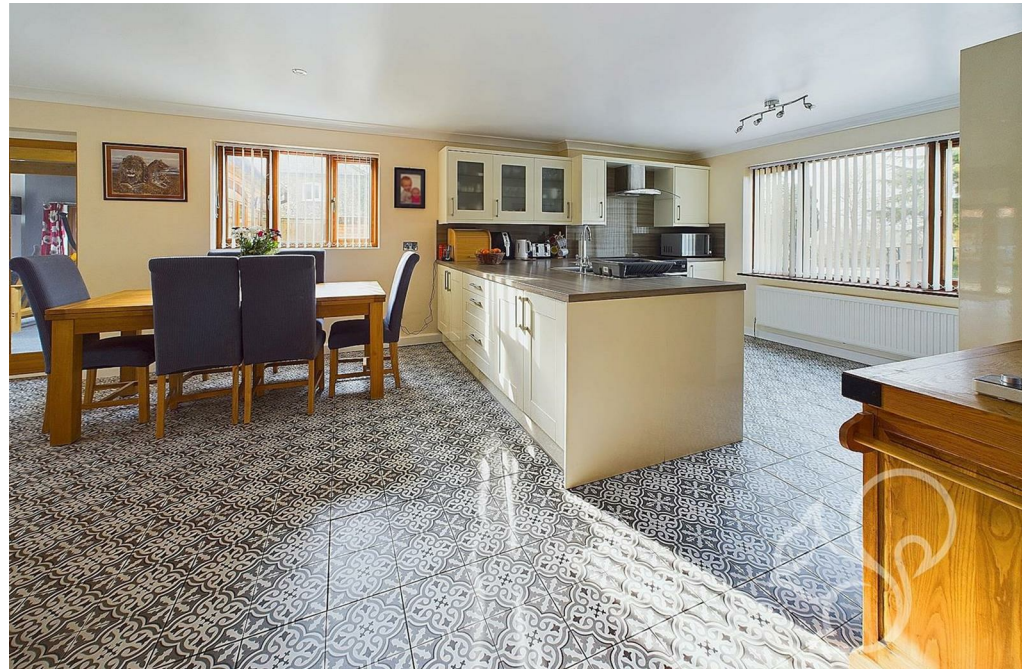
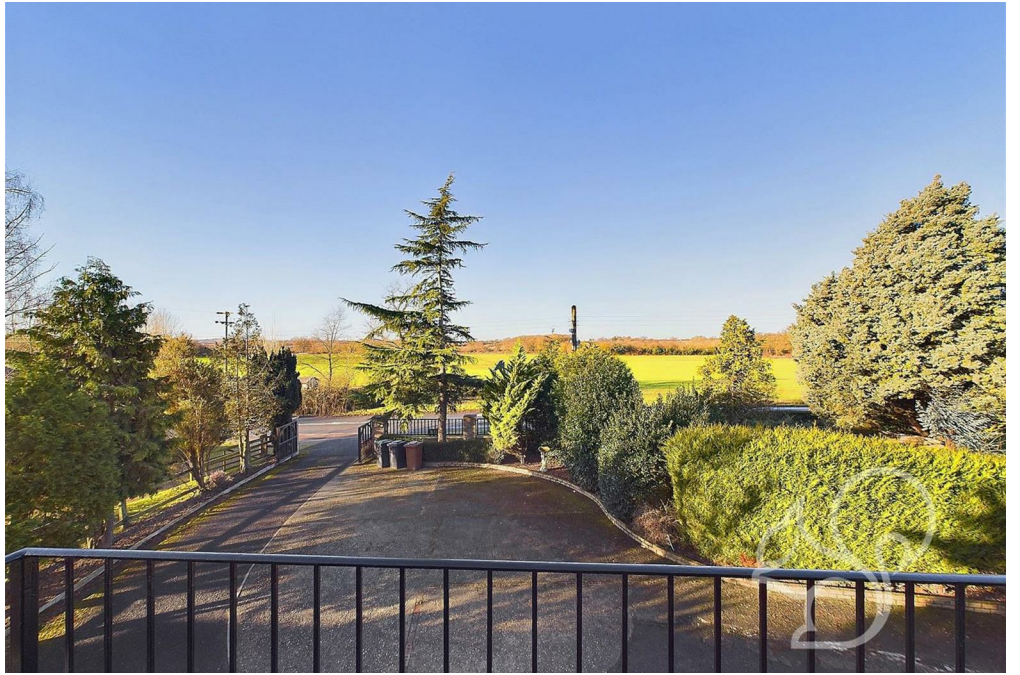
no shortage of bathroom facilities.

The property benefits from a large gated driveway providing ample off-road parking for multiple vehicles, as well as a double detached garage in the rear garden plus an additional smaller former garage offering extra storage or workshop space. The detached annex adds another layer of flexibility—ideal for multi-generational living, guests, or as a potential rental unit.

Located in a quiet village, this home offers the best of both worlds—peaceful rural living with easy access to local amenities, schools, and transport links to larger towns and cities.







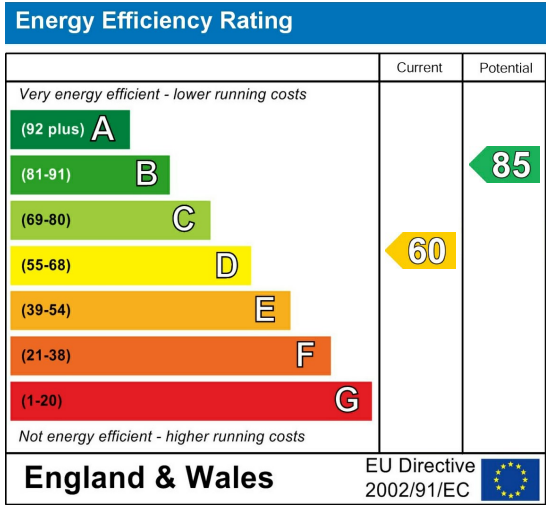




Local Authority:

Tenure:  
Freehold

Council Tax Band:  
E



Agents Note: Whilst every care has been taken to prepare these particulars, they are for guidance purposes only. All measurements are approximate and are for general guidance purposes only and whilst every care has been taken to ensure their accuracy, they should not be relied upon.