

oakheart

£350,000

Offers Over
Trafalgar Way, Thetford



Welcome to this beautifully presented four-bedroom detached townhouse, nestled in the heart of the charming town of Thetford. This exquisite property offers a blend of modern living and classic elegance, perfect for families seeking a spacious and comfortable home.

As you enter, you are greeted by a light and airy open-plan living room, seamlessly flowing into a stunning orangery with bi-folding doors. This space is perfect for entertaining guests or simply enjoying a tranquil view of your garden. The good-sized kitchen, fitted with contemporary fixtures, is ideal for culinary enthusiasts and family meals alike. A convenient downstairs WC completes the ground floor.

The first floor boasts three well-appointed bedrooms. Bedrooms two and three are generous doubles, providing ample space for relaxation and storage. The fourth bedroom is a cozy single, perfect for a child's room, guest room, or home office.

Ascend to the second floor, where you'll find the luxurious master suite. This spacious bedroom offers a peaceful retreat with its own ensuite bathroom, providing a perfect escape from the hustle and bustle of daily life.

The property features a really good-sized garden, ideal for outdoor activities and al fresco dining. An outhouse in the garden adds versatile space for storage or could be transformed into a home office, gym, or playroom.

Additionally, this pretty townhouse comes with a garage and ample parking space, ensuring convenience for multiple vehicles.

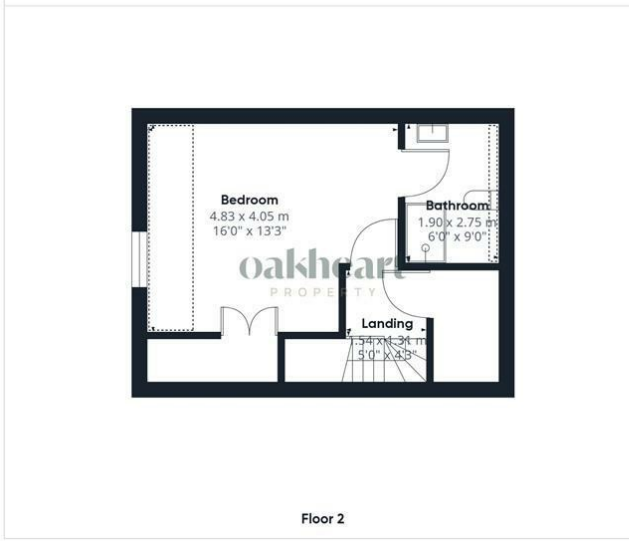
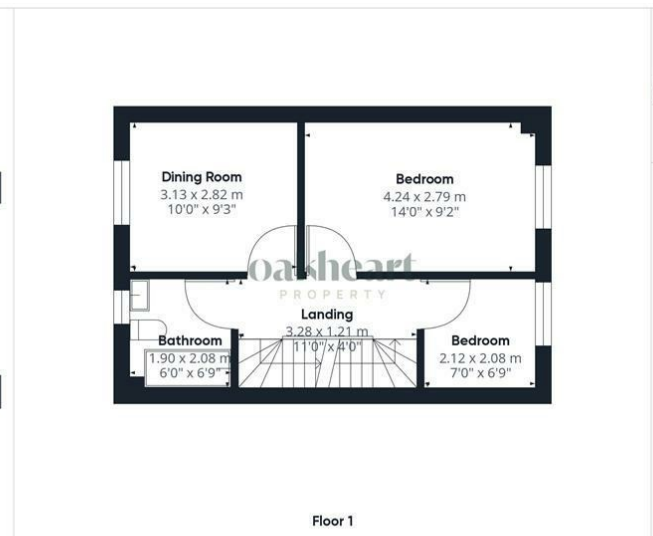
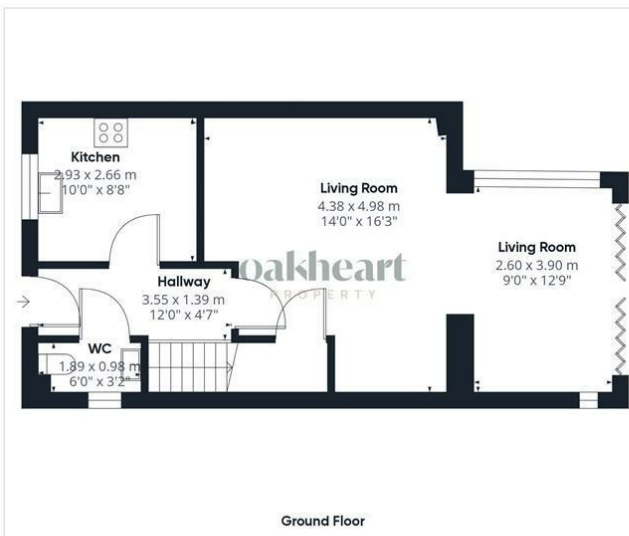
Don't miss the opportunity to make this stunning townhouse in Thetford your new home. Contact us today to arrange a viewing and experience the perfect blend of comfort, style, and functionality.











oakheart

PROPERTY

Approximate total area^m
114.7 m²
1234.62 ft²

Reduced headroom
3.8 m²
40.9 ft²

(1) Excluding balconies and terraces

Reduced headroom
(below 1.5m/4.92ft)

While every attempt has been made to ensure accuracy, all measurements are approximate, not to scale. This floor plan is for illustrative purposes only.


GIRAFFE360

Local Authority:
Breckland

Tenure:
Freehold

Council Tax Band:
D

Energy Efficiency Rating

	Current	Potential
<i>Very energy efficient - lower running costs</i>		
(92 plus) A		
(81-91) B		
(69-80) C		
(55-68) D		
(39-54) E		
(21-38) F		
(1-20) G		
<i>Not energy efficient - higher running costs</i>		
England & Wales	EU Directive 2002/91/EC 	

Agents Note: Whilst every care has been taken to prepare these particulars, they are for guidance purposes only. All measurements are approximate and are for general guidance purposes only and whilst every care has been taken to ensure their accuracy, they should not be relied upon.