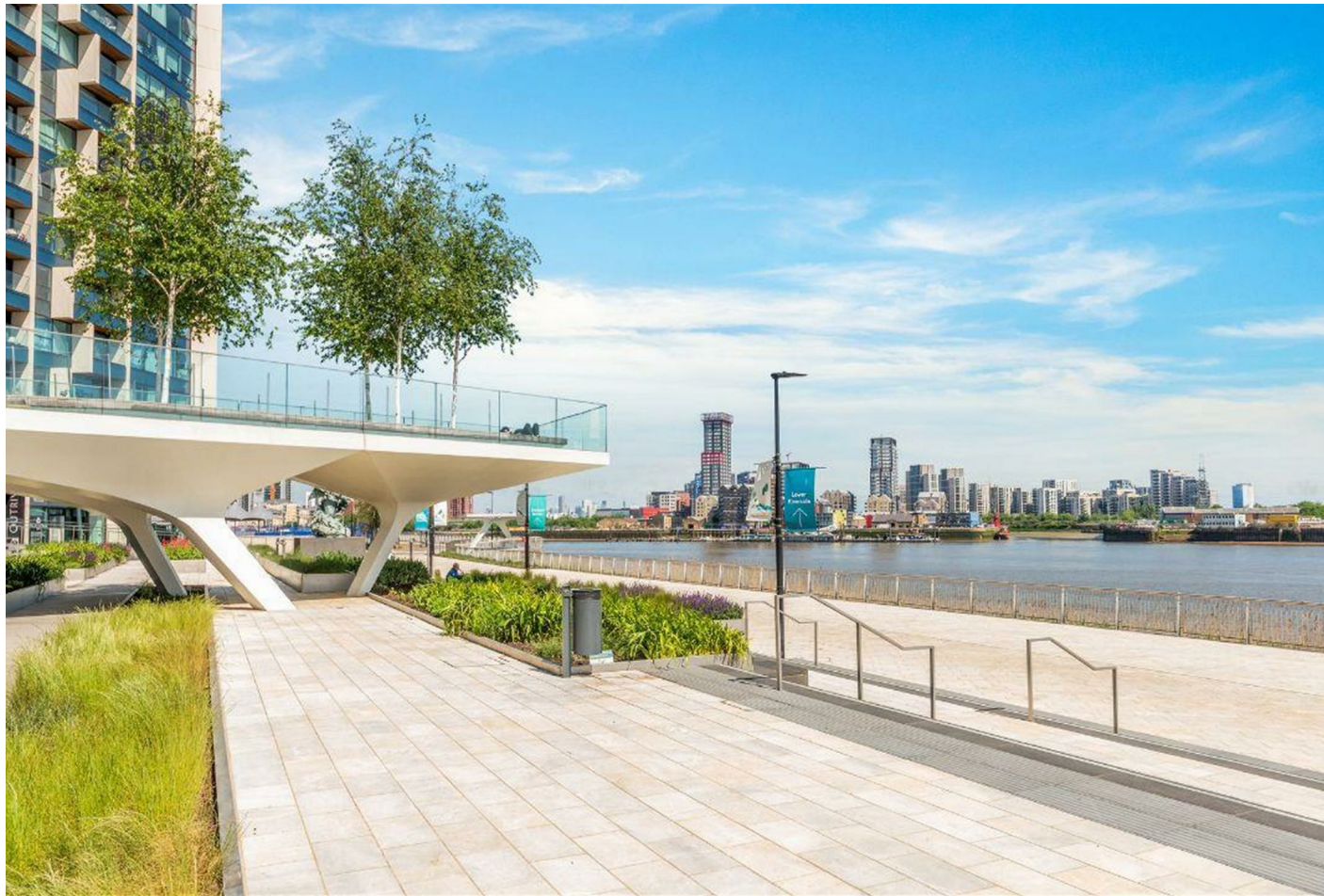
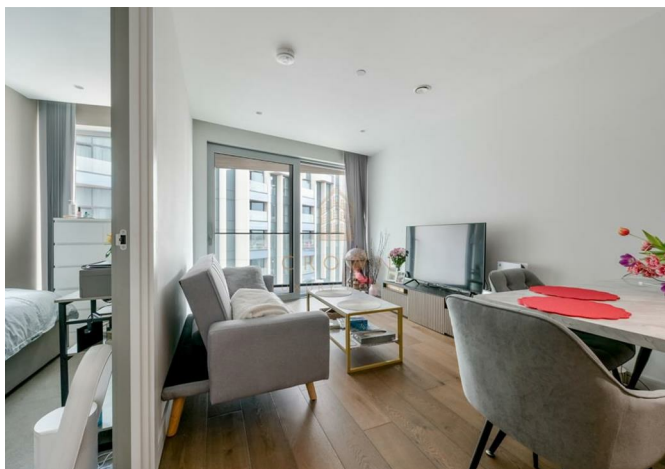
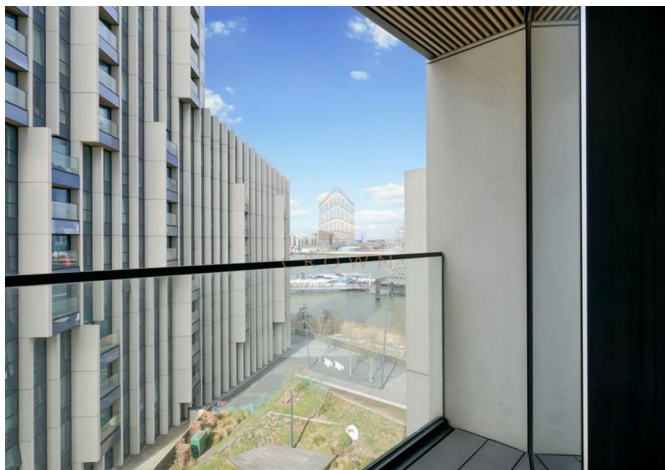




DUPLICATE, 205, 10 Cutter Lane, London, SE10 0XX
£2,500



DUPLICATE, 205, 10 Cutter Lane, London, SE10 0XX

£2,500

Available Now | Balcony | Concierge | Gym | Swimming Pool | Rooftop Terrace | Lounges | Underfloor Heating |
Near O2 Arena | WeChat: CLH-Consultant.

Description

Situation

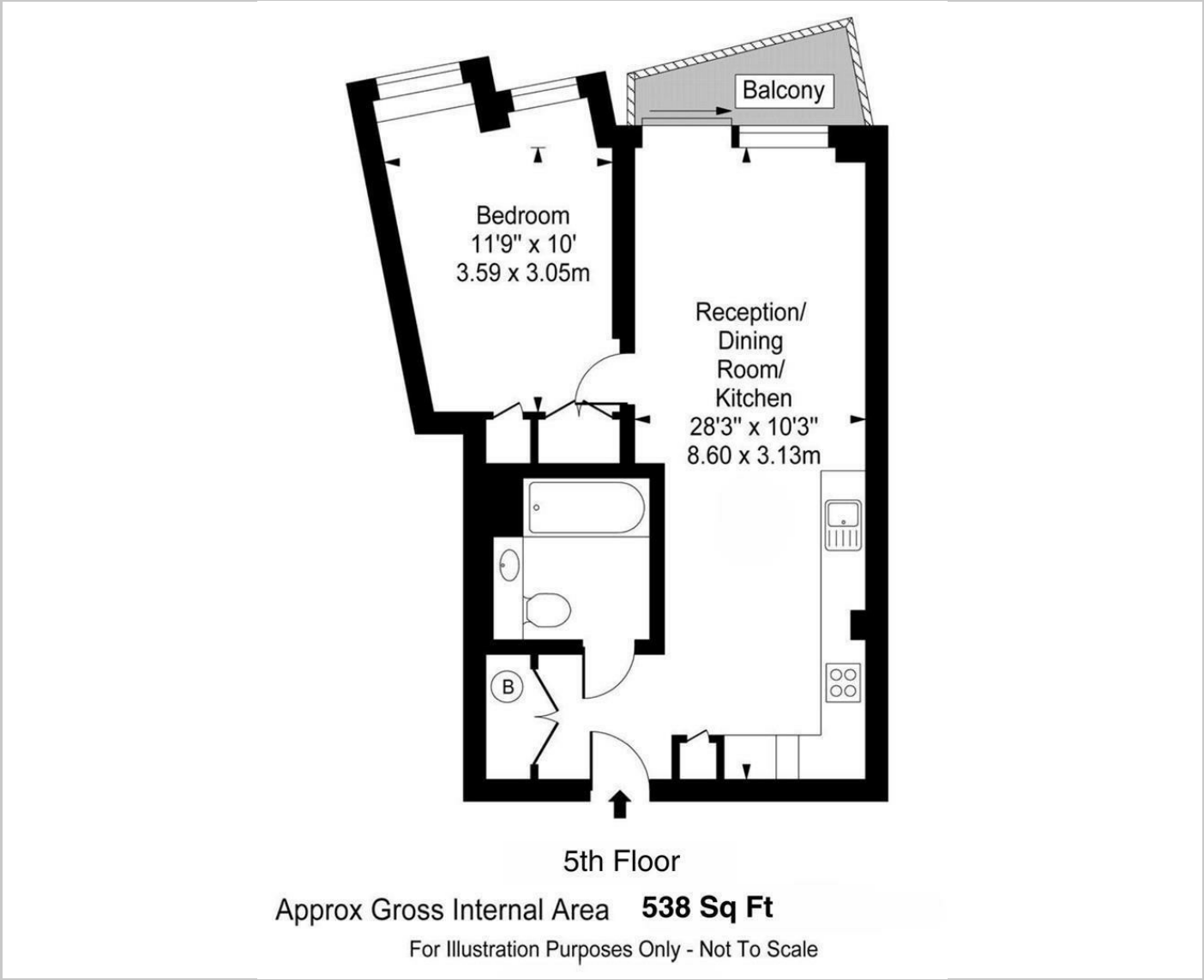
Not specified

Council Tax Band: E

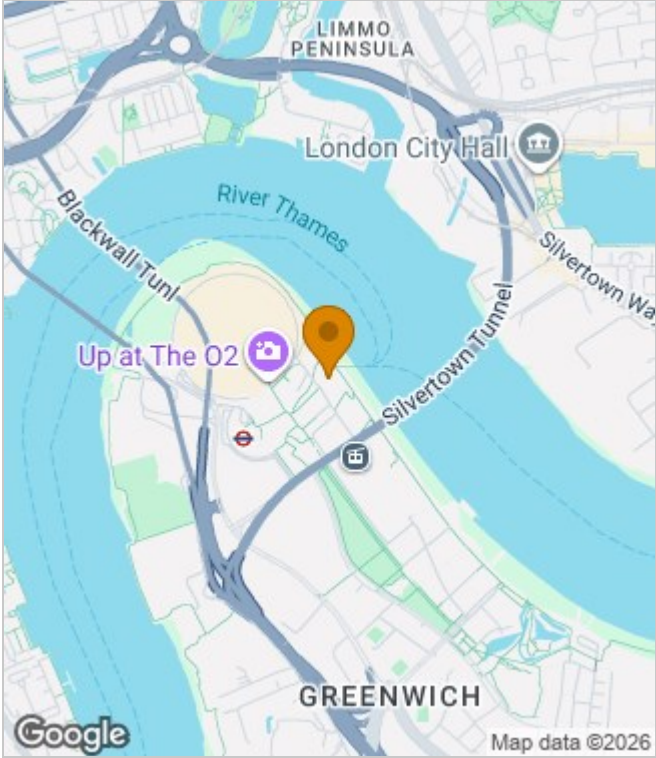
Available: 21st January 2026



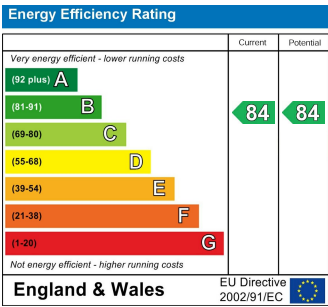
Floor Plans



Area Map



Energy Performance Graph



These particulars, whilst believed to be accurate are set out as a general outline only for guidance and do not constitute any part of an offer or contract. Intending purchasers should not rely on them as statements of representation of fact, but must satisfy themselves by inspection or otherwise as to their accuracy. No person in this firms employment has the authority to make or give any representation or warranty in respect of the property.