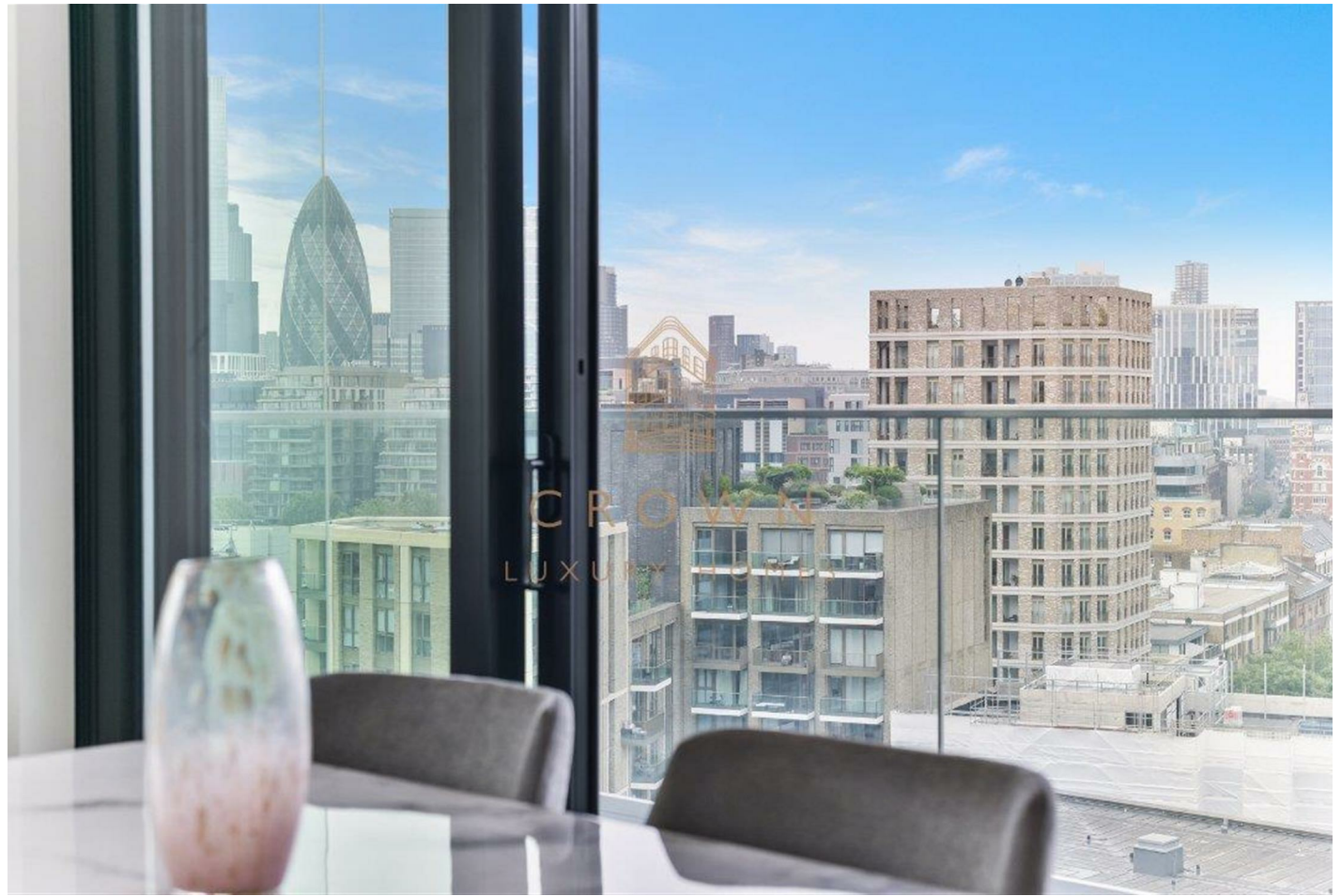


Flat 1401 Cashmere Wharf 23 Gauging Square, London, E1W 2AX
£4,750



Flat 1401 Cashmere Wharf 23 Gauging Square, London, E1W 2AX

£4,750

Available Now | Furnished | 14th Floor | Tremendous Views of London | 2x Balconies | Concierge | Gym | Swimming Pool | Cinema Room | Virtual Golf Room | WeChat: CLH-Consultant.

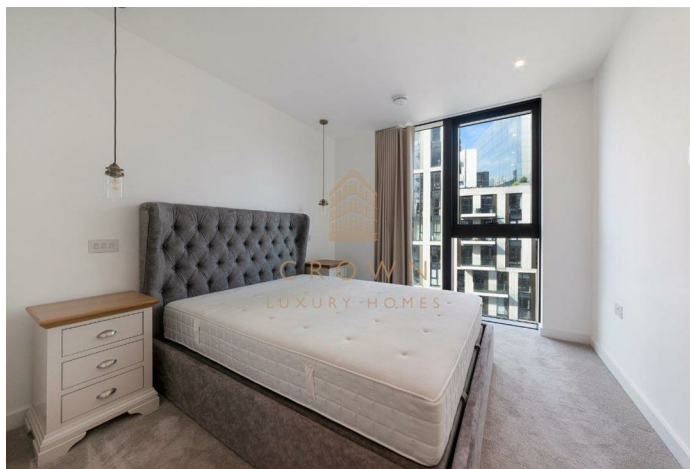
Description

Situation

Furnished

Council Tax Band: G

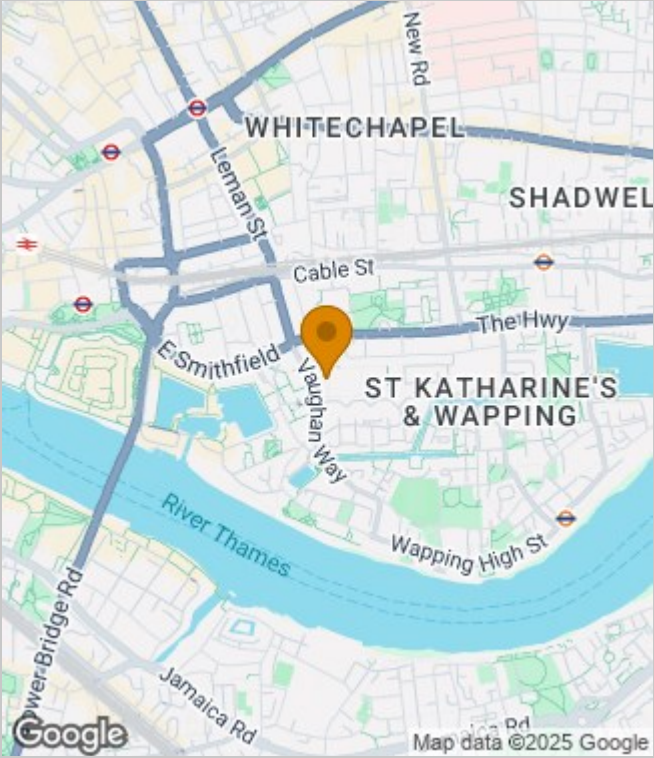
Available: 7th January 2026



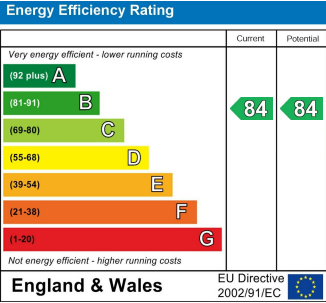
Floor Plans



Area Map



Energy Performance Graph



These particulars, whilst believed to be accurate are set out as a general outline only for guidance and do not constitute any part of an offer or contract. Intending purchasers should not rely on them as statements of representation of fact, but must satisfy themselves by inspection or otherwise as to their accuracy. No person in this firms employment has the authority to make or give any representation or warranty in respect of the property.