



# Hampton Tower – 16th Floor, Canary Wharf

## £3,900



Available Now | Fully Furnished | Large 2-Bedroom Apartment | 16th Floor | Balcony | 24hr Concierge | Swimming Pool | Gym | Rooftop Terrace | WeChat: CLH-Consultant.



CROWN  
LUXURY HOMES

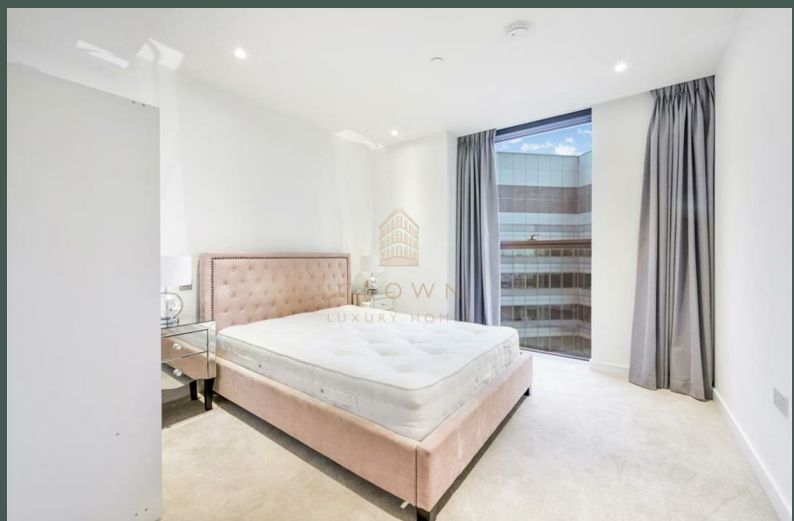
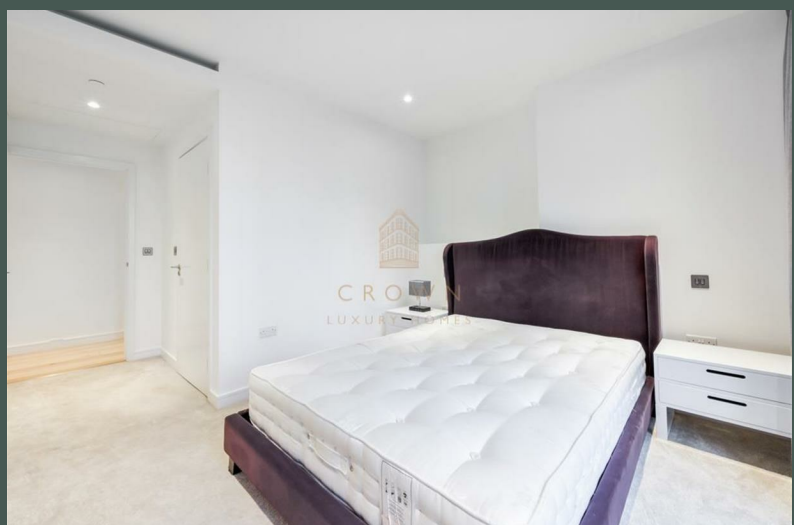
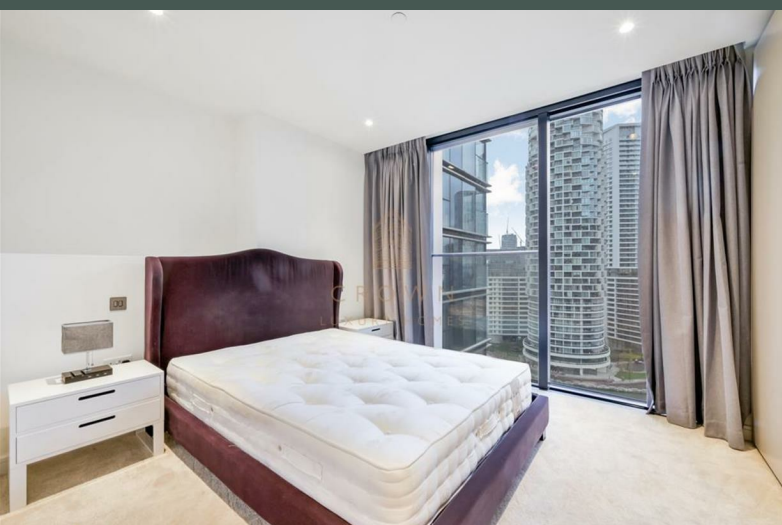
lettings@crownluxuryhomes.com  
+44 2035 143482



- Concierge
- Residents' Swimming Pool & Spa
- Residents' Games & Karaoke Room
  - Residents' Roof Terrace
  - Comfort Cooling

- Residents' Gym
- Residents' Private Screening & Dining Room
- Stunning Views of the O2 Arena & The Canal
  - Residents' Lounge
  - Stunning Interior





### The Property

What truly sets this apartment apart is the way its design elements work together so seamlessly, creating a home that feels both refined and effortlessly comfortable — a perfect reflection of 21st-century London living. The open-plan kitchen and living area is the heart of the apartment, offering uninterrupted views across the dock and a striking outlook towards Canary Wharf. Floor-to-ceiling windows fill the space with natural light throughout the day, enhancing the sense of openness and making the living area an inviting place to unwind or entertain.

Both bedrooms maintain this same connection to the surrounding landscape, with large windows framing the peaceful water views and adding to the calm, contemporary atmosphere that carries through the entire home. The bathroom is thoughtfully finished, featuring high-quality materials and elegant detailing that lend a touch of luxury while remaining practical for everyday use.

Every aspect of the design has been carefully considered to balance style with comfort, resulting in a home that feels modern, bright, and exceptionally well put together. Set within one of London's most desirable dockside developments, this apartment offers a lifestyle defined by great design, natural light, and convenience — an outstanding opportunity for renters seeking something special in the city.

### South Quay Plaza Development

Residents of this privileged apartment will enjoy access to The Quay Club, boasting a gym, treatment rooms, sauna, steam room, experience showers, vitality pool, and an impressive 140 square meter swimming pool. Furthermore, the development features a screening room, dining and meeting facilities, an outdoor kitchen, as well as a private residents bar, lounge, and terrace on the 56th floor. A 24-hour concierge service is also available. Conveniently located opposite the South Quay DLR station, with Canary Wharf tube station (Jubilee and Elizabeth line) and shopping centres just a short stroll away from the development.

### Additional Information

Heating/Hot Water Provider: Insite Energy

Council: Tower Hamlets, Band F

Holding Deposit: Equivalent to 1 Weeks' Rent

Security Deposit: Equivalent to 5 Weeks' Rent

Local Council: Tower Hamlets  
Council Tax Band: F

Energy Efficiency Rating			Environmental Impact (CO <sub>2</sub> ) Rating		
	Current	Potential		Current	Potential
Very energy efficient - lower running costs			Very environmentally friendly - lower CO <sub>2</sub> emissions		
(92 plus) A			(92 plus) A		
(81-91) B			(81-91) B		
(69-80) C	84	84	(69-80) C		
(55-68) D			(55-68) D		
(39-54) E			(39-54) E		
(21-38) F			(21-38) F		
(1-20) G			(1-20) G		
Not energy efficient - higher running costs			Not environmentally friendly - higher CO <sub>2</sub> emissions		
England & Wales	EU Directive 2002/91/EC		England & Wales	EU Directive 2002/91/EC	

