



Nuthatch Apartments, Hendon Waterside

£1,950 Per month



September Availability | Fully Furnished | Balcony | Great Transport Links | Floor-to-ceiling Windows | Integrated Appliances | Close to Hendon Train Station | WeChat: CLH-Consultant.



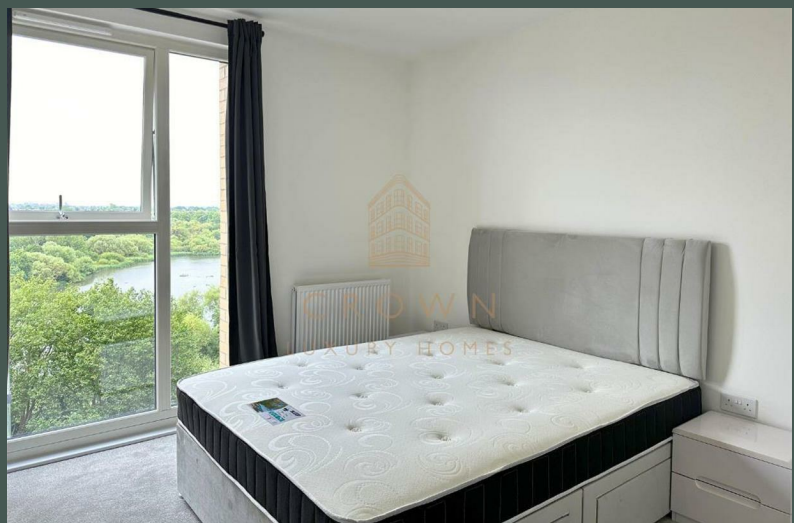
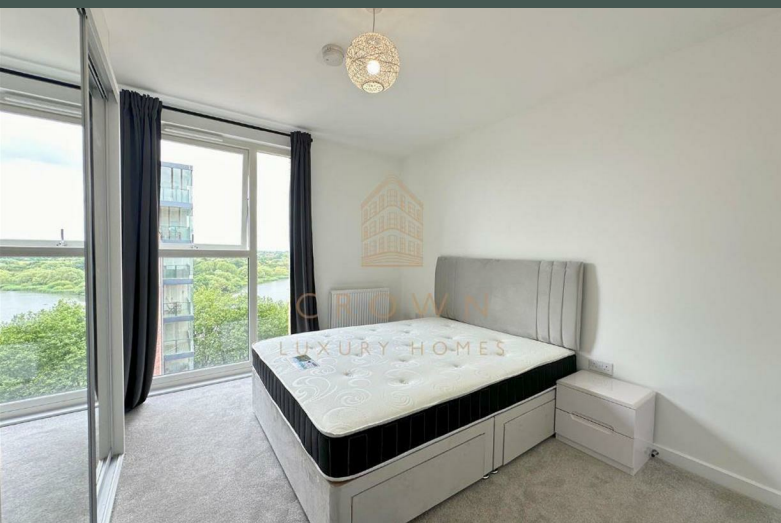
CROWN
LUXURY HOMES

lettings@crownluxuryhomes.com
+44 2035 143482



- Private Balcony
- Brand New
- Great Transport Links
- 20 Mins from Central London
- Close to Hendon Underground Station

- Great Views of The Welsh Harp Reservoir
- Landscaped Gardens
- Floor-to-ceiling windows
- Modern Interior
- Short Walk to Hendon Train Station



The Property

This bright and spacious apartment offers modern living with uninterrupted views of the reservoir. Floor-to-ceiling windows fill the home with natural light, creating a welcoming atmosphere throughout the living, dining, and kitchen area. The open-plan layout feels expansive and leads directly to a private balcony—an ideal spot to enjoy your morning coffee while taking in the serene water views.

The kitchen is both stylish and functional, complete with integrated appliances and ample storage space to keep everything organised.

The bedroom continues the light-filled feel of the apartment, with large windows and built-in wardrobes providing generous storage without compromising space.

The bathroom is beautifully designed, with rich contrasting tones creating a cozy, spa-like environment. Mirrored cabinets provide discreet storage, maintaining a clean and modern look. This apartment perfectly balances contemporary comfort with calming natural surroundings.

Hendon Waterside Development

Hendon Waterside is a vibrant, perfectly located neighbourhood in North London. Set within expansive landscaped communal gardens and adjacent to the restored lakefront of the Welsh Harp, it offers both beautiful surroundings and stylish interiors. Each home boasts high-quality specifications including sleek, fitted kitchens with integrated appliances; all designed to offer optimal comfort and functionality.

CCTV security system coverage across all residential building and entrances, Supermarket within development, On-site community centre, Landscaped gardens, Children's play area are all part of the beautiful Hendon Waterside Development.

Hendon is well-connected with London. With both train lines and an underground station to make the commute simple and fast. Hendon is a vibrant place with many restaurants, cafes and is home to the Royal Air Force Museum. You can read our area guide on our website.

Additional Information

Heating/Hot Water Provider: E-on Energy (Fees and charges may apply; please refer to the supplier for more information)

Council: Barnet, Band: C

Holding Deposit: Equivalent to 1 Weeks' Rent

Security Deposit: Equivalent to 5 Weeks' Rent

Local Council: Barnet Council
Council Tax Band: C

Energy Efficiency Rating		Environmental Impact (CO ₂) Rating			
	Current	Potential		Current	Potential
Very energy efficient - lower running costs					
(92 plus) A			(92 plus) A		
(81-91) B			(81-91) B		
(69-80) C			(69-80) C		
(55-68) D			(55-68) D		
(39-54) E			(39-54) E		
(21-38) F			(21-38) F		
(1-20) G			(1-20) G		
Not energy efficient - higher running costs					
England & Wales		EU Directive 2002/91/EC	England & Wales		EU Directive 2002/91/EC

