



Meranti House - 17th Floor, Aldgate £3,500



September Availability | Fully Furnished | Balcony | Beautiful Views | 24/7 Concierge | Gym | Swimming Pool | Spa Facilities | Cinema Room | Onsite Restaurants | WeChat: CLH-Consultant.



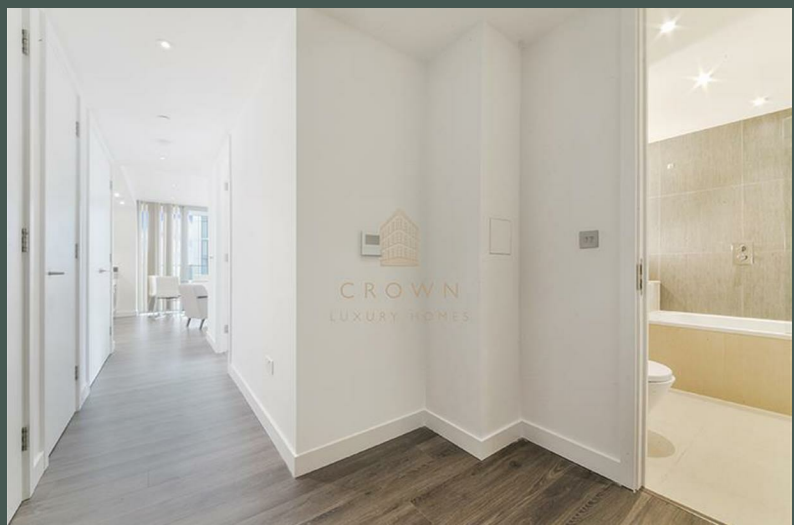
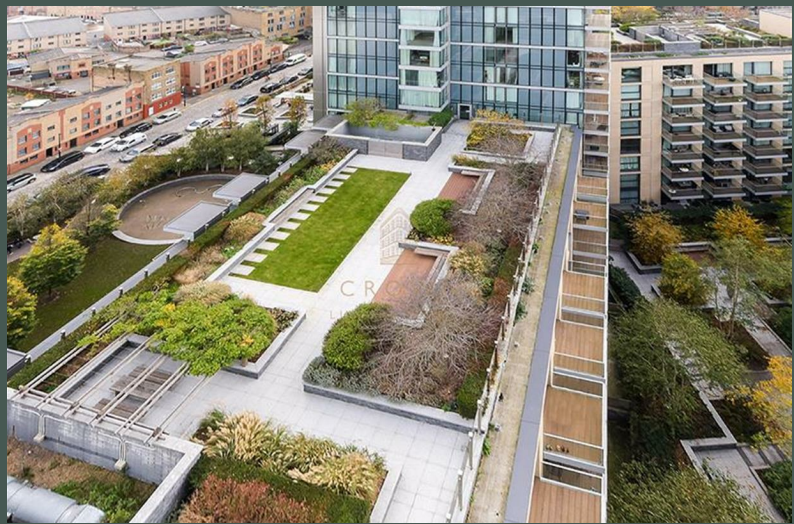
CROWN
LUXURY HOMES

lettings@crownluxuryhomes.com
+44 2035 143482



- Private Balcony
 - Concierge
- Residents' Swimming Pool
- Floor-to-ceiling Windows
- Great Transport Links

- Stunning Views of London
 - Residents' Gym
- Residents' Cinema Room
 - 17th Floor
- Near Aldgate East Station



The Property

The apartment is finished to a high standard and comprises: a double bedroom with floor to ceiling windows and fitted wardrobes; a light and airy reception room leading onto a private balcony with far reaching views and a high specification fully fitted open plan kitchen with integrated appliances; a modern bathroom with bath tub and overhead rain shower; further storage cupboards in the hallway.

Goodmans Field Development

Residents benefit from a 24-hour concierge, residents' private screening room, pool, gym and spa, just moments' walk from the City and Shoreditch.

Goodman's Fields is located on the doorstep of the City of London and providing a selection of independent coffee shops, cafes and restaurants, a hotel, 2 acres of stunning landscaping and unforgettable public art.

Whether you enjoy cinema, live music, theatre, fine art, or indeed just about any kind of entertainment you can imagine, you will find it within easy reach of Goodman's Fields. Often, it won't mean travelling to just any place but, whether in the form of the galleries of Tate Modern or the open-air stage of The Globe, to one of the iconic institutions that make London the envy of the world.

Goodman's Fields is located within close proximity to various centres for higher learning. Within easy commuting distance from world-renowned Universities and Colleges including the University of Westminster, London University of Arts, King's College and Imperial College London.

Just a two minute walk to Aldgate East underground station from Goodman's Fields means that getting where you want to go, be it across town to a meeting or to an airport for a romantic weekend away, is really quite simple. By taxi, rail, or tube, the central business district, shops and London City Airport are only a short trip away. Within 5 - 10 minutes' walking distance are three London Underground stations, a Docklands Light Railway terminal and a mainline rail terminus.

Local Council: Tower Hamlets
Council Tax Band: E

Energy Efficiency Rating		Environmental Impact (CO ₂) Rating			
	Current	Potential		Current	Potential
Very energy efficient - lower running costs					
(92 plus) A			(92 plus) A		
(81-91) B			(81-91) B		
(69-80) C			(69-80) C		
(55-68) D			(55-68) D		
(39-54) E			(39-54) E		
(21-38) F			(21-38) F		
(1-20) G			(1-20) G		
Not energy efficient - higher running costs					
England & Wales		EU Directive 2002/91/EC	England & Wales		EU Directive 2002/91/EC

