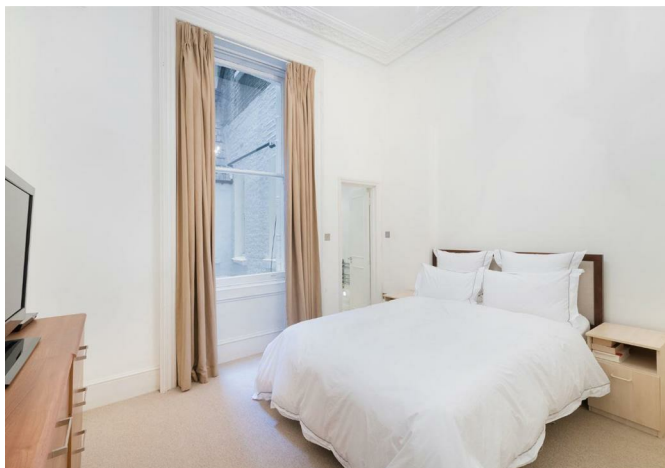




Flat 2, 20 Courtfield Gardens, London, SW5 0PD
£2,900



Flat 2, 20 Courtfield Gardens, London, SW5 0PD

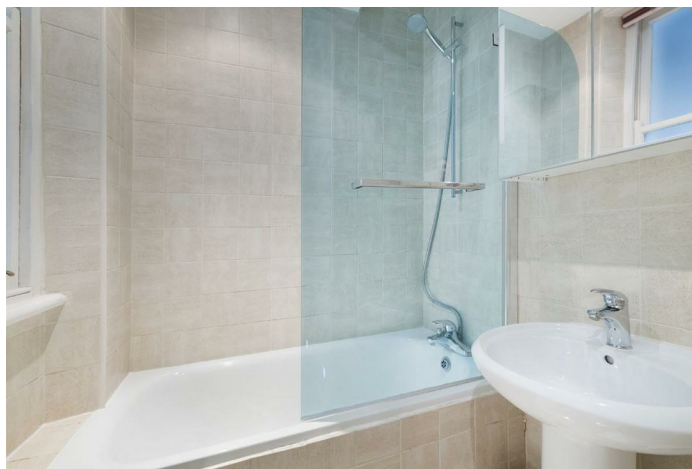
£2,900

Fully furnished flat | 1 Bedroom | Large Flat | 58m² | High Ceilings | Dressing Room | Tenants Have Access to Communal Gardens | Near Gloucester Road Station and Earl's Court

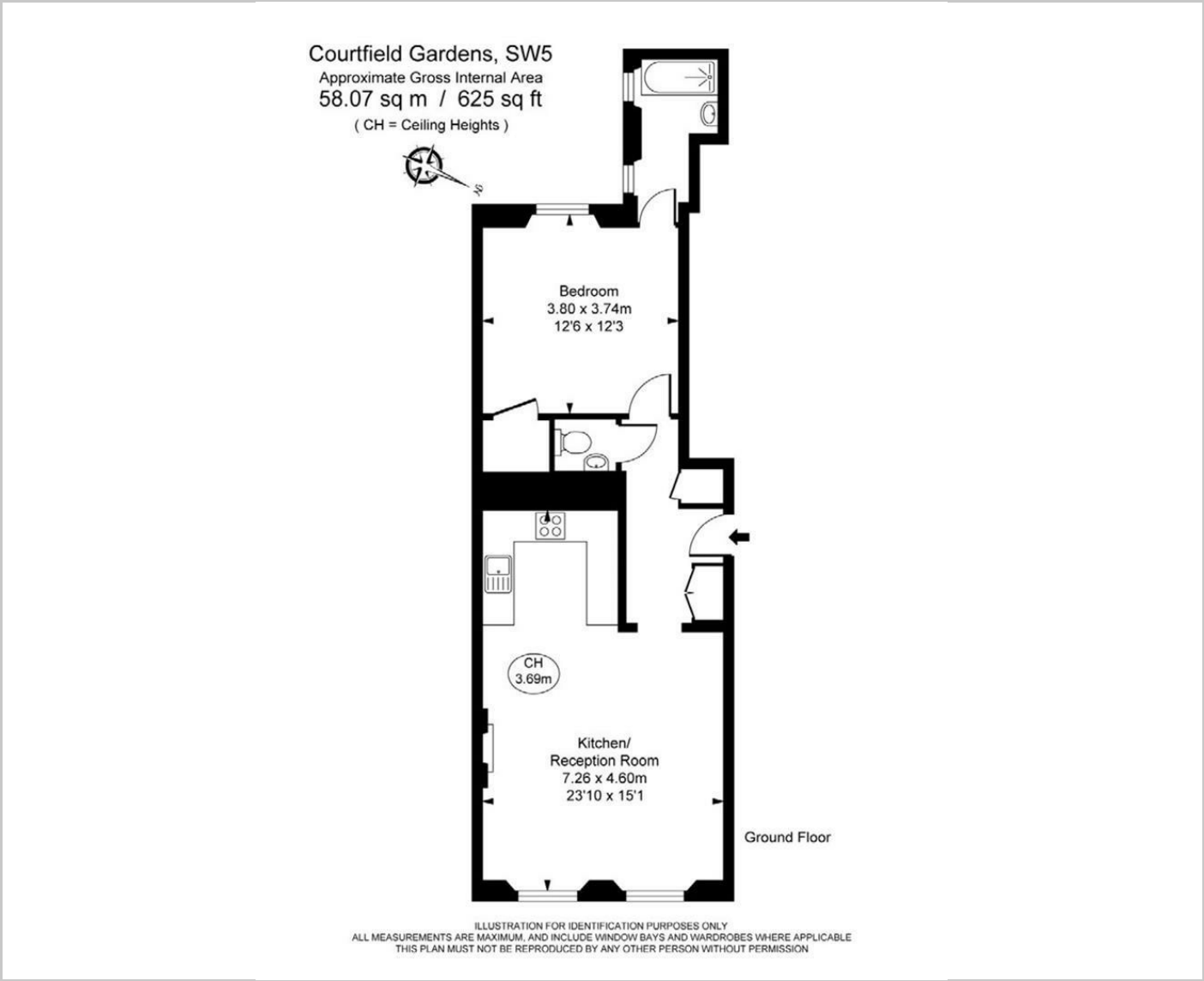
Description

Situation

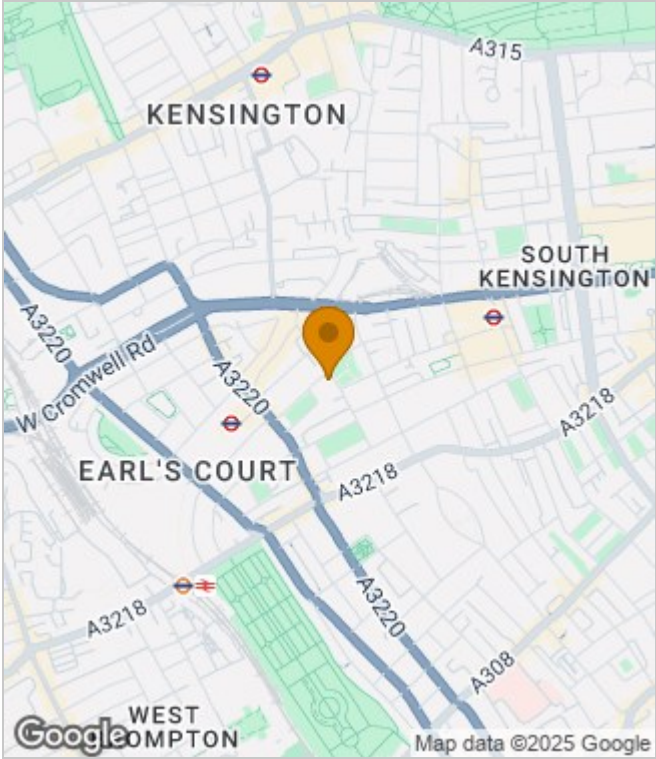
Furnished
Council Tax Band: F
Available: 16th August 2025



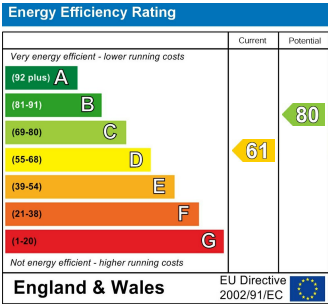
Floor Plans



Area Map



Energy Performance Graph



These particulars, whilst believed to be accurate are set out as a general outline only for guidance and do not constitute any part of an offer or contract. Intending purchasers should not rely on them as statements of representation of fact, but must satisfy themselves by inspection or otherwise as to their accuracy. No person in this firms employment has the authority to make or give any representation or warranty in respect of the property.