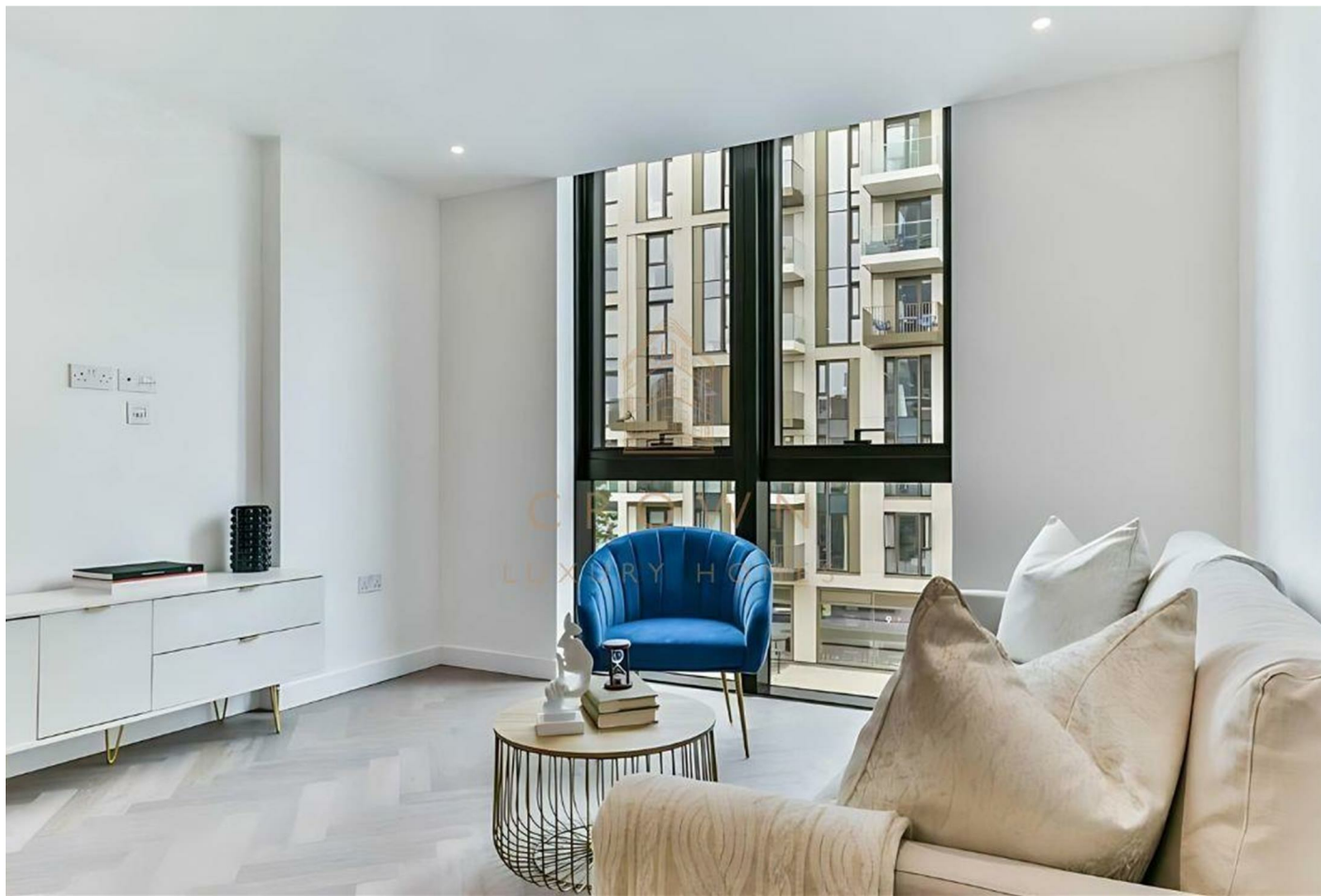
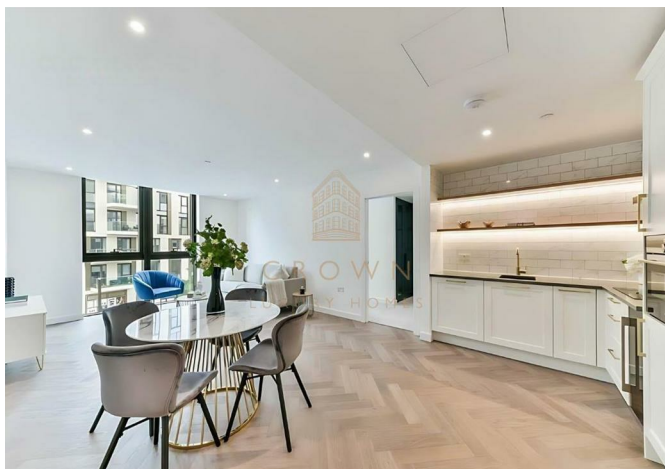
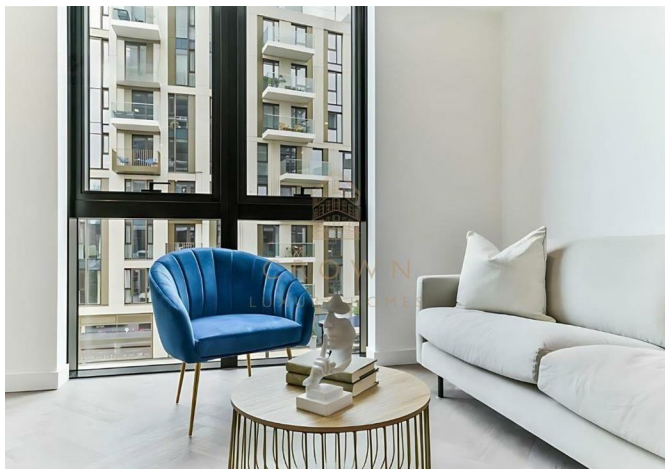




Flat 307, Cashmere Wharf 23 Gauging Square, London, E1W 2AW  
£3,250



Flat 307, Cashmere Wharf 23 Gauging Square, London, E1W 2AW

£3,250

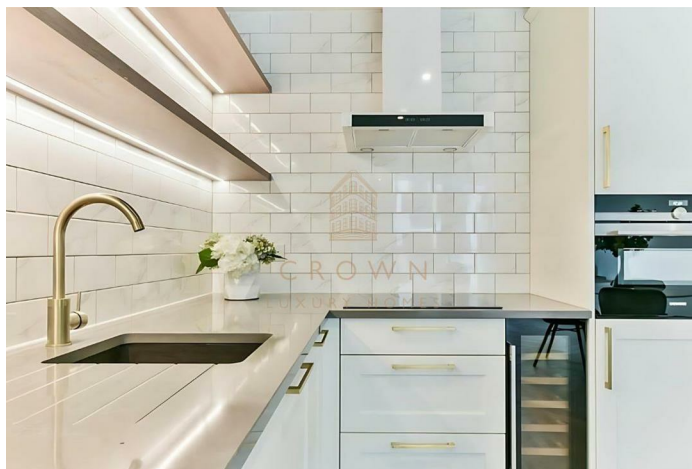
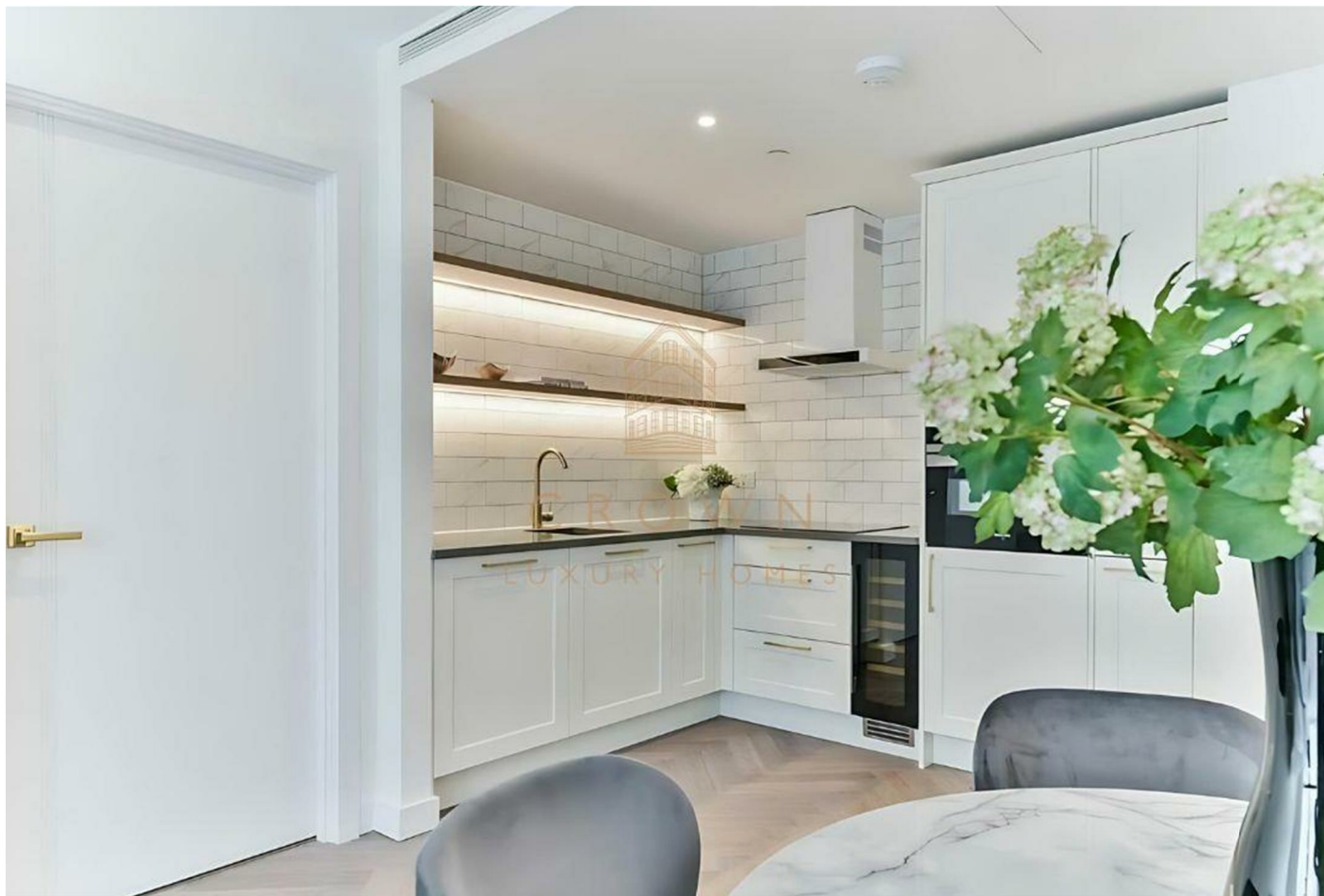
A beautiful one bedroom, one bathroom apartment in Cashmere Wharf, part of the London Dock Development in the heart of Wapping, E1W.



## Description

## Situation

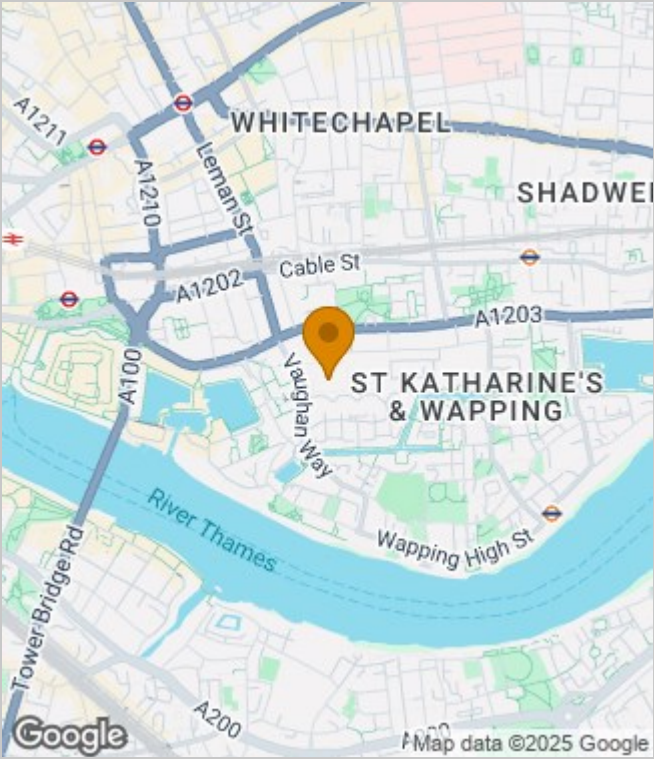
Furnished  
Council Tax Band: F  
Available: 28th August 2025



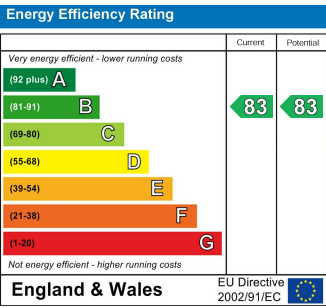
Floor Plans



Area Map



Energy Performance Graph



These particulars, whilst believed to be accurate are set out as a general outline only for guidance and do not constitute any part of an offer or contract. Intending purchasers should not rely on them as statements of representation of fact, but must satisfy themselves by inspection or otherwise as to their accuracy. No person in this firms employment has the authority to make or give any representation or warranty in respect of the property.