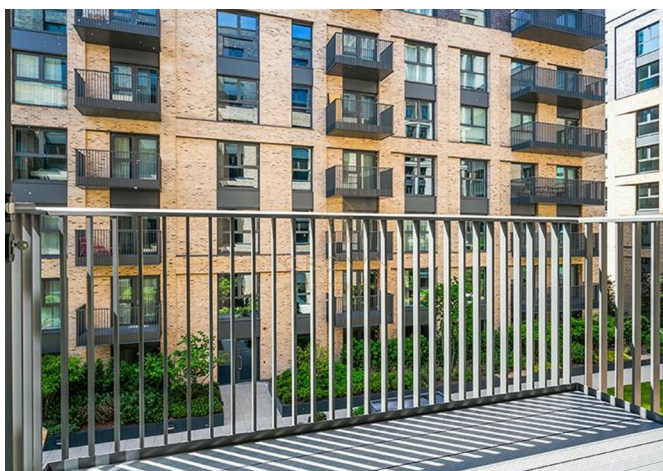




21 Azure Apartments Dragonfly Walk, London, N4 2WS
£2,200



Gift VOUCHER

amazon

£200

PURCHASE WHAT YOU NEED

MOVE IN BEFORE

31. 05. 25

21 Azure Apartments Dragonfly Walk, London, N4 2WS

£2,200

BRAND NEW, modern 1-bed in Azure Apartments, Woodberry Down, with open-plan living, balcony, integrated appliances, built-in storage, and close to Manor House station.

Description

Situation

Unfurnished
Council Tax Band: C
Available:



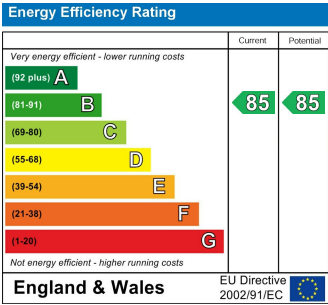
Floor Plans



Area Map



Energy Performance Graph



These particulars, whilst believed to be accurate are set out as a general outline only for guidance and do not constitute any part of an offer or contract. Intending purchasers should not rely on them as statements of representation of fact, but must satisfy themselves by inspection or otherwise as to their accuracy. No person in this firms employment has the authority to make or give any representation or warranty in respect of the property.