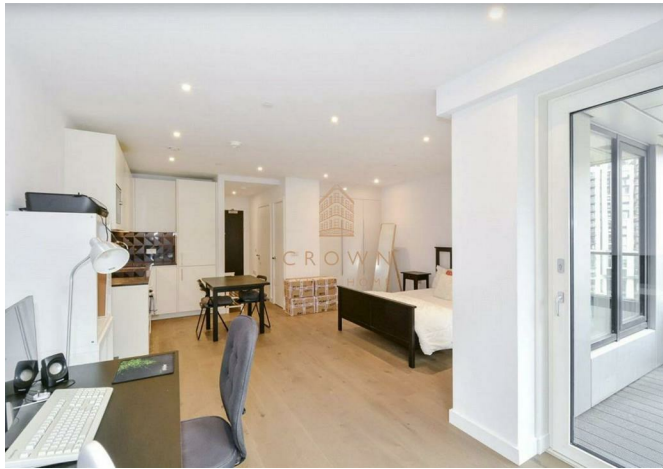


Flat 706, Hurlocks Heights Deacon Street, London, SE17 1GD
£600,000



Flat 706, Hurlocks Heights Deacon Street, London, SE17 1GD

£600,000

Step into this bright and spacious studio apartment on the 7th floor of Walton Heights, just moments away from Elephant & Castle Station.

Description

The Property

Step inside this bright and airy studio apartment, where natural light floods through large windows, making the space feel open and welcoming. The living area is thoughtfully designed, offering a cosy yet spacious feel, with stunning views over the communal gardens. Sliding doors lead out to a private balcony—perfect for enjoying your morning coffee or unwinding in the evening, with plenty of space for outdoor furniture.

The sleek, modern kitchen is fully equipped with integrated appliances and plenty of cupboard space, making it both stylish and practical.

Tucked away, the sleeping area offers built-in storage to keep things tidy, while the bathroom is finished in elegant, calming tones. With a bathtub and shower combination, along with extra storage, it's the perfect spot to relax after a long day.

Elephant Park Development

Residents at Elephant Park have access to a broad range of five-star facilities, including a private gym, rooftop garden, landscaped communal area and a residents' hosting room. A 24 hr concierge service is on hand to make life just that little bit easier, and local transport links are fast and effective, ensuring this outstanding part of London gets better and better with each passing year.

Additional Information

Heating/Hot Water Provider: E-on Heat

Council: Southwark, Band E

Service Charge: £3,500 (subject to change)

Ground Rent: £300 per annum (subject to change)

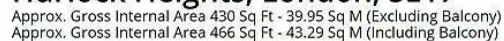
Local Council: Southwark

Council Tax Band: E



Floor Plans

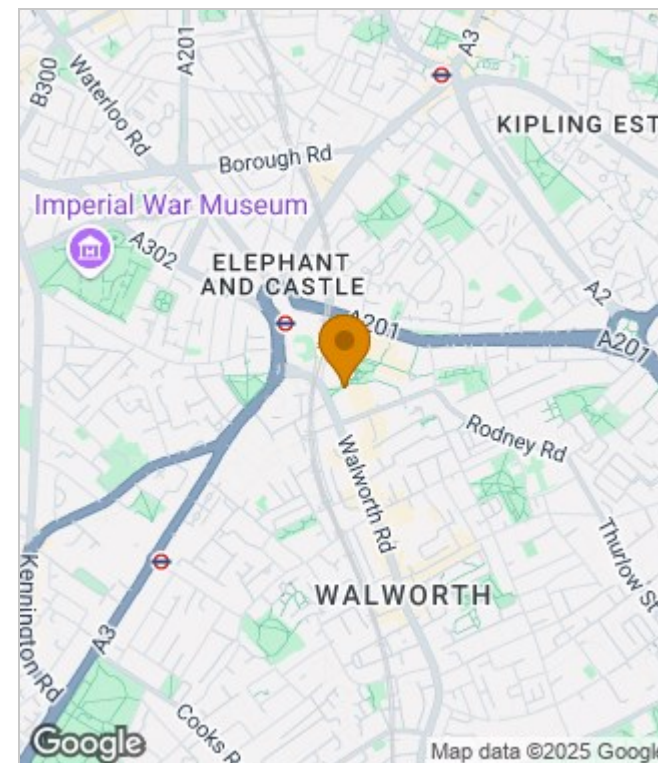
Area Map



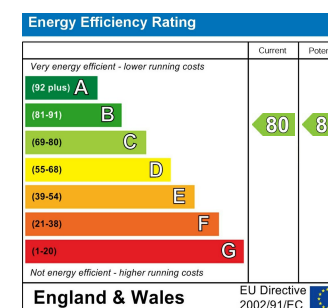
Floor Area 430 Sq Ft - 39.95 Sq M

Floor plan is for illustrative purposes only and is not to scale. Every attempt has been made to ensure the accuracy of the floor plan shown, however all measurements, fixtures, fittings and data shown are an approximate interpretation for illustrative purposes only.

lpaplus.com



Energy Performance Graph



These particulars, whilst believed to be accurate are set out as a general outline only for guidance and do not constitute any part of an offer or contract. Intending purchasers should not rely on them as statements of representation of fact, but must satisfy themselves by inspection or otherwise as to their accuracy. No person in this firm's employment has the authority to make or give any representation or warranty in respect of the property.

199 Bishopsgate, London, EC2M 3TY

Tel: +44 2035 143482 Email: lettings@crownluxuryhomes.com <https://www.crownluxuryhomes.com/>