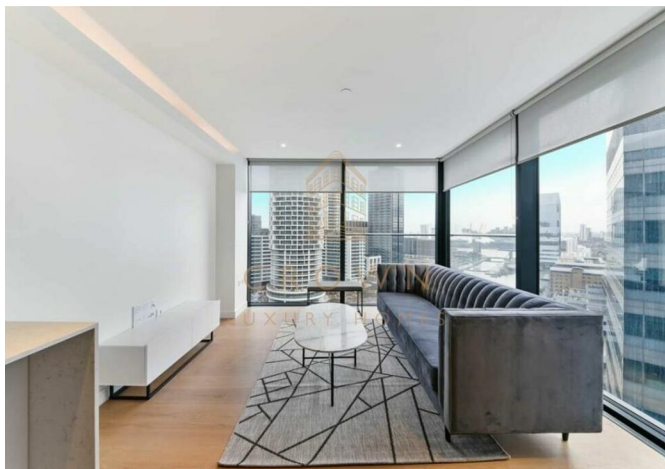




2201 Hampton Tower, Marsh Wall, London, E14 9RW
£4,750



2201 Hampton Tower, Marsh Wall, London, E14 9RW

£4,750

A stunning two bedroom property in Hampton Tower featuring panoramic views from 32nd floor, part of the increasingly sought after South Quay development in E14.

Description

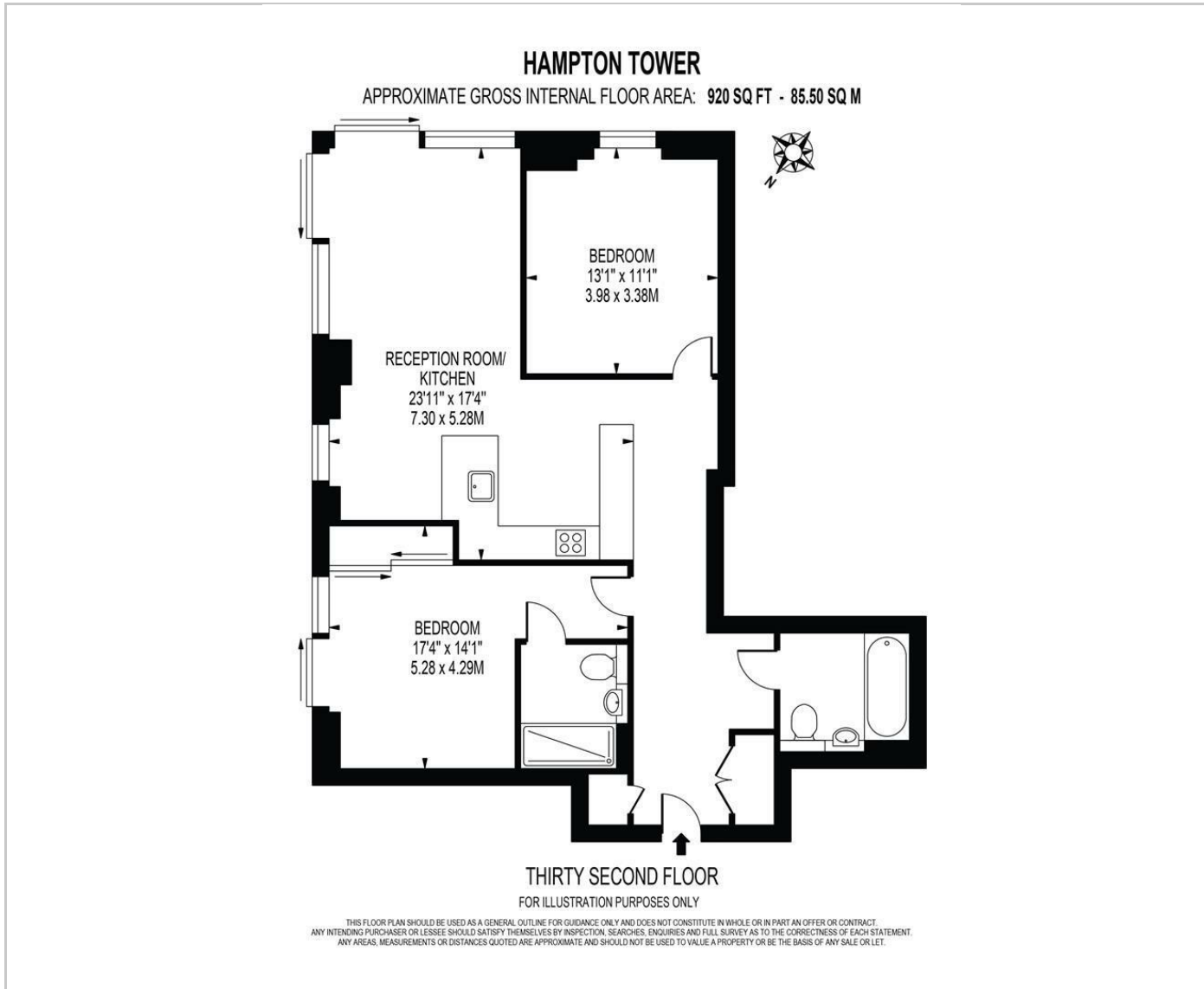


Situation

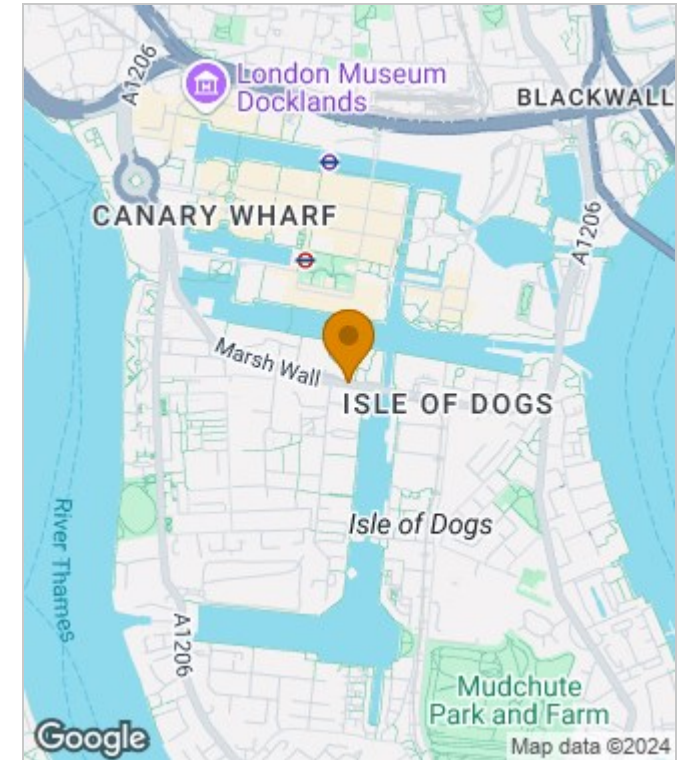


Furnished
Council Tax Band: F
Available:

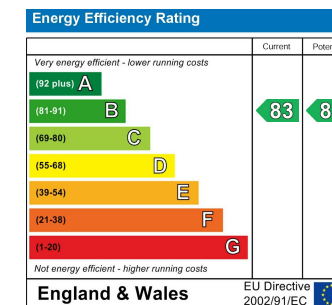
Floor Plans



Area Map



Energy Performance Graph



These particulars, whilst believed to be accurate are set out as a general outline only for guidance and do not constitute any part of an offer or contract. Intending purchasers should not rely on them as statements of representation of fact, but must satisfy themselves by inspection or otherwise as to their accuracy. No person in this firm's employment has the authority to make or give any representation or warranty in respect of the property.