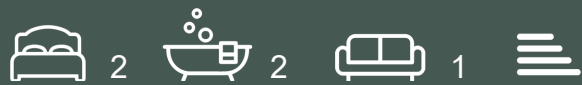




Belvedere Row, White City Living £3,900 Per month



A modern, two-bedroom apartment with a balcony overlooking the communal gardens situated in W12, just walking distance from White City Station and Westfield White City Shopping Centre.



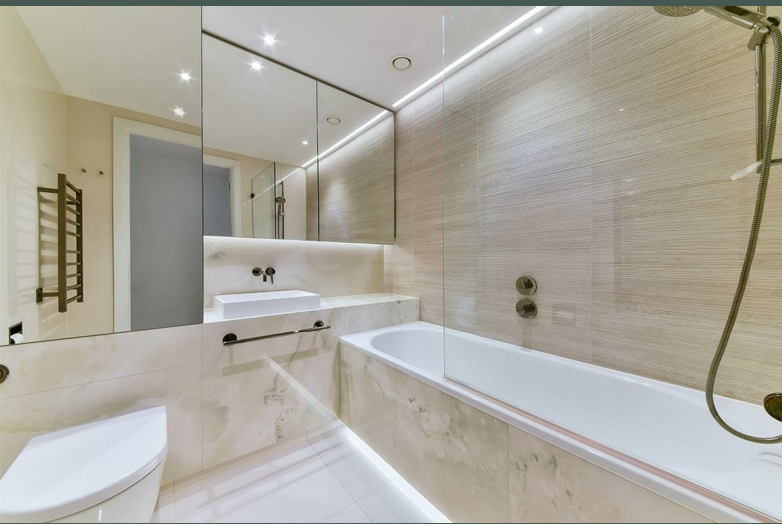
CROWN
LUXURY HOMES

lettings@crownluxuryhomes.com
+44 2035 143482



- Floor-to-ceiling Windows
- Residents' Swimming Pool
- Residents' Cinema Rooms
- Great Transport Links

- Large Balcony
- Residents' Spa
- Residents' Gym
- Walking Distance to Westfield Shopping Centre



The apartment is flooded with natural light thanks to its large windows. This spacious living area provides access to a private balcony with a view of the communal gardens.

There is plenty of storage in the kitchen, as well as Miele appliances such as an induction hob with extractor fan, oven, fridge/freezer, and dishwasher. Polished composite stone worktops and LED lighting add to the kitchen's modern appearance.

Both bedrooms are spacious, with soft carpets and integrated wardrobes. The main bedroom has access to an en-suite featuring a walk-in shower and the man bathroom is fitted with a bathtub. Both bathrooms has marble effect tiling, mirrored vanity cabinets with shelving, excellent lighting, and mirrors.

Residents at White City Living have access to an amazing selection of facilities, the focus firmly on health, vitality and staying active. With a private gym, pool and cinema, plus expansive gardens, this really is a place to call home. With fast and efficient travel links and a host of high-end shops and eateries close-by, White City Living remains one of the capital's premier, community-led developments.

White City Living is a remarkable development, part of some of London's most prodigious neighbourhoods. Moments from Notting Hill, Kensington and Holland Park, this easy-going, cosmopolitan environment is a real oasis of calm. Situated right on the water's edge, White City Living has been specifically tailored to provide exceptional quality-of-life for all its residents. With amazing views and excellent amenities, this is somewhere that, as the years pass, continues to build on its well-earned reputation as a wonderful place to spend time.

It's certainly fair to say that Notting Hill, Kensington and Holland park are among the most desirable hot-spots anywhere in the city. Notting Hill, for instance, is famous for Portobello Road, an exciting, bohemian stretch known for its busy market, selling incredible street-food, genuine antiques and vintage fashion. Meanwhile, Holland Park can lay claim to an incredible 54 acres of greenspace. With a Japanese garden, walking trails, peacocks and wildflowers, it's somewhere to explore, enjoy and really lose yourself.

Local Council: Hammersmith & Fulham
 Council Tax Band: F

Energy Efficiency Rating		Environmental Impact (CO ₂) Rating	
	Current	Potential	
Very energy efficient - lower running costs			Current
(92 plus) A			Potential
(81-91) B			
(69-80) C			
(55-68) D			
(39-54) E			
(21-38) F			
(1-20) G			
Not energy efficient - higher running costs			
England & Wales	EU Directive 2002/91/EC		

Energy Efficiency Rating		Environmental Impact (CO ₂) Rating	
	Current	Potential	
Very environmentally friendly - lower CO ₂ emissions			Current
(92 plus) A			Potential
(81-91) B			
(69-80) C			
(55-68) D			
(39-54) E			
(21-38) F			
(1-20) G			
Not environmentally friendly - higher CO ₂ emissions			
England & Wales	EU Directive 2002/91/EC		

