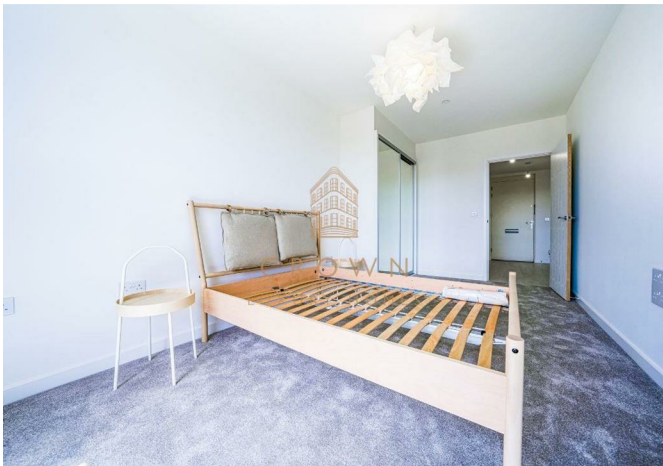




Flat 17 Nuthatch Apartments 16 Shearwater Drive, London, NW9 7QB
£1,800



Flat 17 Nuthatch Apartments 16 Shearwater Drive, London, NW9 7QB

£1,800

A brand new one bedroom, one bathroom apartment in the brand new Hendon Waterside Development. This exquisite apartment is situated just 20 minutes from Central London by public transport.

Description



Situation

Furnished
Council Tax Band: New Build
Available: 12th July 2024



Floor Plans



1 BEDROOM APARTMENT



Level 2



Level 3



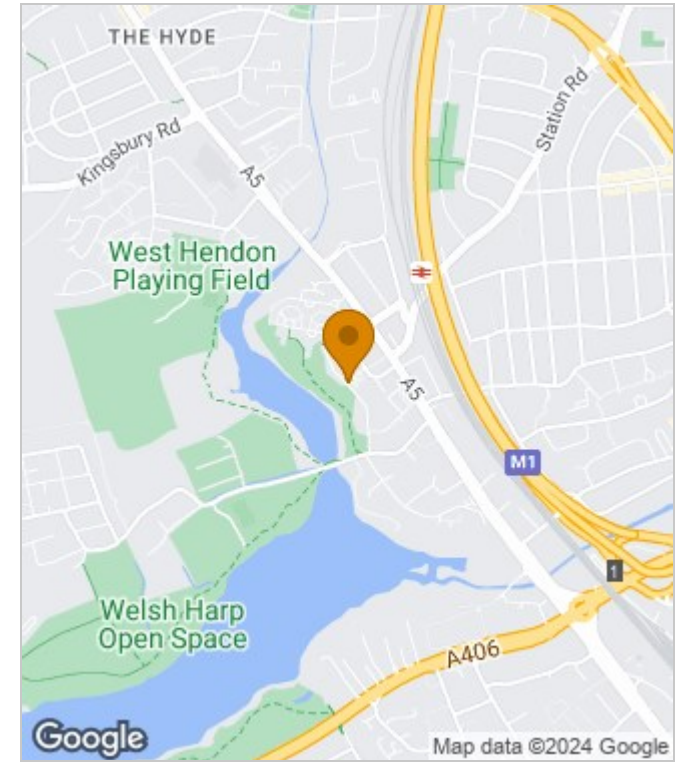
Level 4

33


PLOTS 110, 111, 112, 122, 123, 124, 134, 135 & 136

Living/Dining/Kitchen 9'7" x 21'9" (2925 x 6620mm)	TOTAL AREA 555 ft ² (51.6 m ²)
Bedroom 9'0" x 18'1" (2750 x 5500mm)	Balcony 58 ft ² (5.3 m ²)
Bathroom 6'9" x 7'1" (2050 x 2150mm)	

Area Map



Energy Performance Graph

Energy Efficiency Rating		Current	Potential
Very energy efficient - lower running costs			
(92 plus) A			
(81-91) B			
(69-80) C			
(55-68) D			
(39-54) E			
(21-38) F			
(1-20) G			
Not energy efficient - higher running costs			
England & Wales		EU Directive 2002/91/EC	

These particulars, whilst believed to be accurate are set out as a general outline only for guidance and do not constitute any part of an offer or contract. Intending purchasers should not rely on them as statements of representation of fact, but must satisfy themselves by inspection or otherwise as to their accuracy. No person in this firm's employment has the authority to make or give any representation or warranty in respect of the property.