



Principal Tower – 15th Floor, Shoreditch

£5,500



A spacious, two-bedroom apartment on 15th floor with Canary Wharf views is now available at the highly-sought after Principal Tower in the City of London. Zone 1.

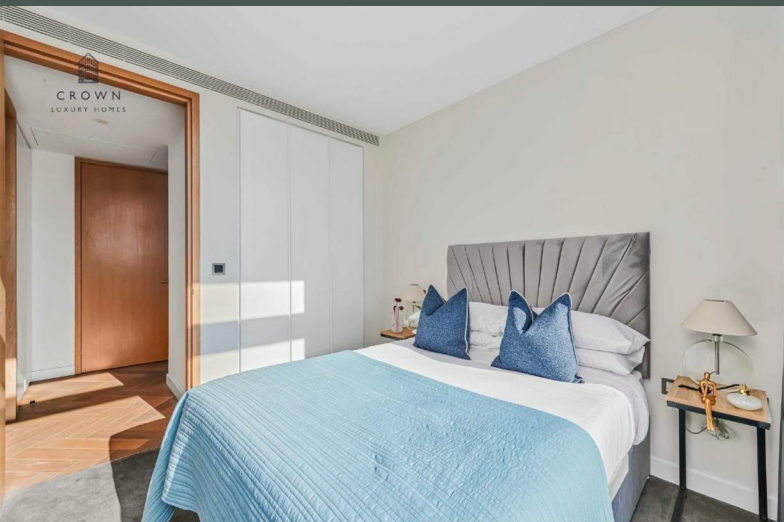
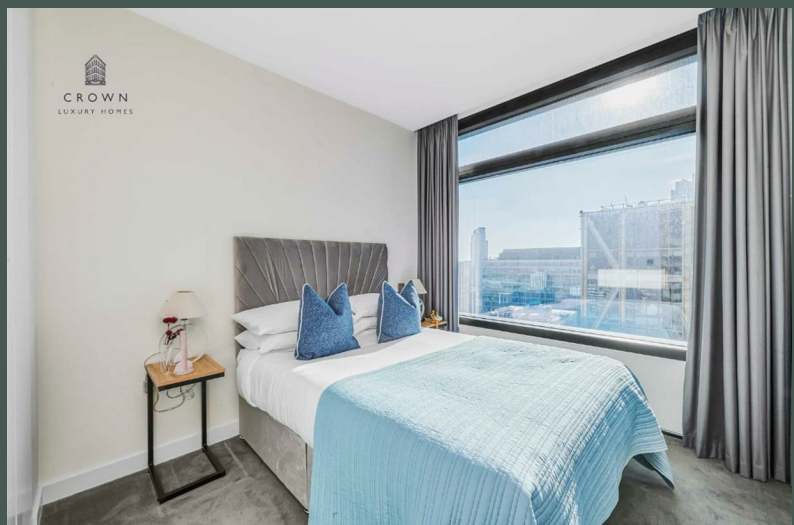
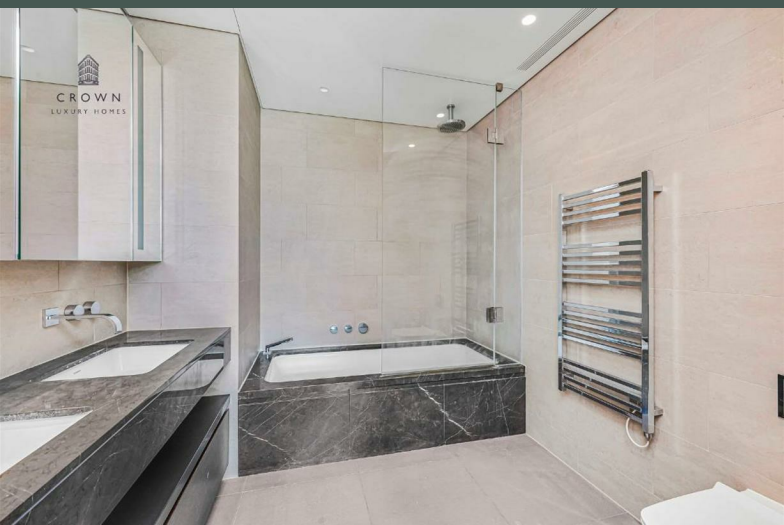
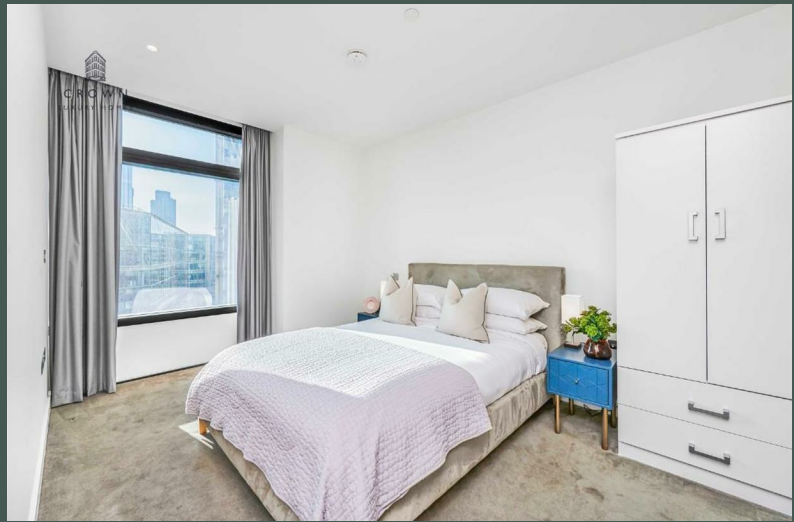
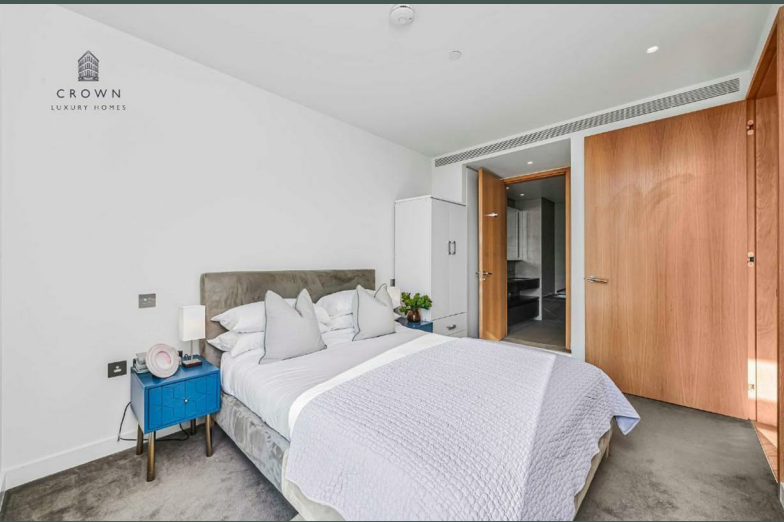


CROWN
LUXURY HOMES

lettings@crownluxuryhomes.com
+44 2035 143482



- Breathtaking Views
- Great Transport Links
 - 24hr Concierge
- Residents' Swimming Pool
- Residents' Cinema Room
- Private Balcony
- Overlooking Canary Wharf
- Open Plan Living Area
- Residents' Gym
- 15th Floor



The Apartment

The apartment has been configured in order to maximise the impact of the views from beyond, with the open-plan living area leading directly onto the balcony that has uninterrupted views of Canary Wharf and the City. Herringbone oak floors, neutral walls and full-height windows provide the ideal canvas to showcase the city's ever-changing views.

The living and dining area maximises light and space while creating a tranquil, relaxing ambiance. The large floor-to-ceiling windows bring the natural light and also gives you a perfect backdrop with Canary Wharf views and access to a curved balcony.

Meanwhile, the fully-equipped kitchen includes integrated appliances, wide composite stone work surfaces, and a stainless steel sink. It has a Miele oven and hob, a fridge/freezer, and a wine cooler.

This property also benefits from two great-sized, immaculately finished bedrooms with fitted wardrobes in both of them. The primary bedroom has access to a traditional marble tiled en-suite with a huge tub, an above shower, and a well-lit vanity unit. Whilst the second bathroom is situated adjacent to the second bedroom and is finished to perfection featuring a walk-in shower as well as plenty of storage in the mirrored vanity unit.

Principal Tower Development

Residents of Principal Tower enjoy exclusive amenities such as state-of-the-art gymnasium, an elegant swimming pool, a private cinema and residents' lounge. Moreover, the location of Principal Tower adds to its allure. Nestled within the dynamic neighbourhood of Shoreditch and on the fringes of the City of London, residents have easy access to an array of cultural hotspots, fine dining restaurants, trendy bars, and designer boutiques. The proximity to transportation hubs ensures convenience for both work and leisure, offering seamless connectivity to different parts of London and beyond.

Additional Information

Please note that there will be an extra £28 charge for the cost of the internet.

Local Council: Hackney
 Council Tax Band: F

Energy Efficiency Rating		Environmental Impact (CO ₂) Rating	
	Current	Potential	
Very energy efficient - lower running costs			Very environmentally friendly - lower CO ₂ emissions
(92 plus) A			(92 plus) A
(81-91) B			(81-91) B
(69-80) C			(69-80) C
(55-68) D			(55-68) D
(39-54) E			(39-54) E
(21-38) F			(21-38) F
(1-20) G			(1-20) G
Not energy efficient - higher running costs			Not environmentally friendly - higher CO ₂ emissions
England & Wales	EU Directive 2002/91/EC		England & Wales
			EU Directive 2002/91/EC

