



Nuthatch Apartments, Hendon Waterside, NW9 £1,950 Per month

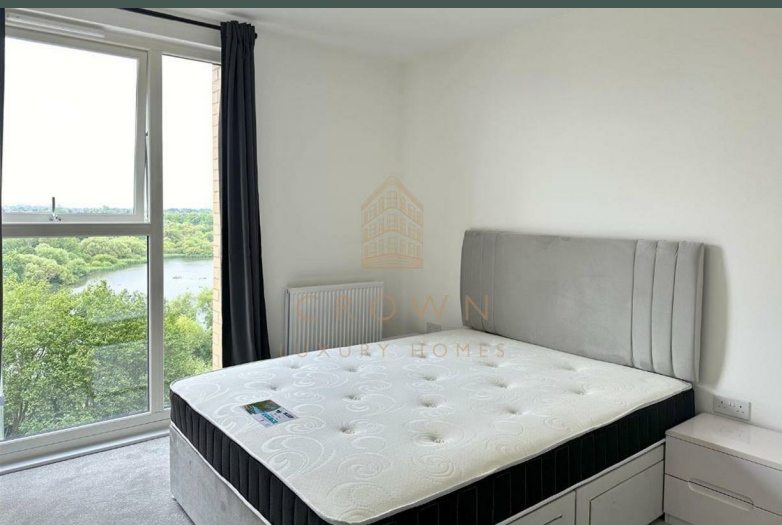


A brand new one bedroom, one bathroom apartment in the brand new Hendon Waterside Development, NW9. This exquisite apartment is situated just 20 minutes from Central London.



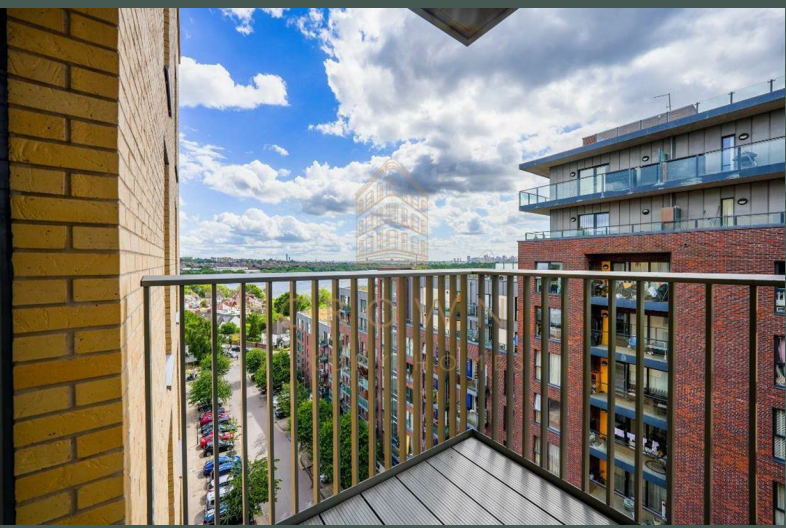
CROWN
LUXURY HOMES

lettings@crownluxuryhomes.com
+44 2035 143482



- Private Balcony
 - Brand New
- Great Transport Links
 - 20 Mins from Central London
- Close to Hendon Underground Station

- Great Views of The Welsh Harp Reservoir
 - Landscaped Gardens
 - Floor-to-ceiling windows
 - Modern Interior
- Short Walk to Hendon Train Station



The Property

The apartment is bright and spacious, featuring floor-to-ceiling windows that let in lots of natural light. The living, dining and kitchen area is spacious and leads to the balcony that features beautiful views of the reservoir. The kitchen features integrated appliances and offers lots of storage for food and all the other kitchen essentials. The balcony is of a reasonable size, and is a great place to start your morning with the beautiful views and a cup of coffee.

The bedroom also has floor-to-ceiling windows for lots of natural light. The bedroom also features integrated wardrobe space for ample storage.

The bathroom is luxurious and modern. Featuring contrasting colour tones, it makes the bathroom feel cozy and relaxing. The mirrored-cabinets also have storage behind them.

Hendon Waterside Development

Hendon Waterside is a vibrant, perfectly located neighbourhood in North London. Set within expansive landscaped communal gardens and adjacent to the restored lakefront of the Welsh Harp, it offers both beautiful surroundings and stylish interiors. Each home boasts high-quality specifications including sleek, fitted kitchens with integrated appliances; all designed to offer optimal comfort and functionality.

CCTV security system coverage across all residential building and entrances, Supermarket within development, On-site community centre, Landscaped gardens, Children's play area are all part of the beautiful Hendon Waterside Development.

Hendon is well-connected with London. With both train lines and an underground station to make the commute simple and fast. Hendon is a vibrant place with many restaurants, cafes and is home to the Royal Air Force Museum. You can read our area guide on our website.

Local Council: Barnet Council
 Council Tax Band: New Build

Energy Efficiency Rating		Environmental Impact (CO ₂) Rating	
	Current	Potential	
Very energy efficient - lower running costs			Very environmentally friendly - lower CO ₂ emissions
(92 plus) A			(92 plus) A
(81-91) B			(81-91) B
(69-80) C			(69-80) C
(55-68) D			(55-68) D
(39-54) E			(39-54) E
(21-38) F			(21-38) F
(1-20) G			(1-20) G
Not energy efficient - higher running costs			Not environmentally friendly - higher CO ₂ emissions
England & Wales	EU Directive 2002/91/EC		England & Wales
			EU Directive 2002/91/EC

