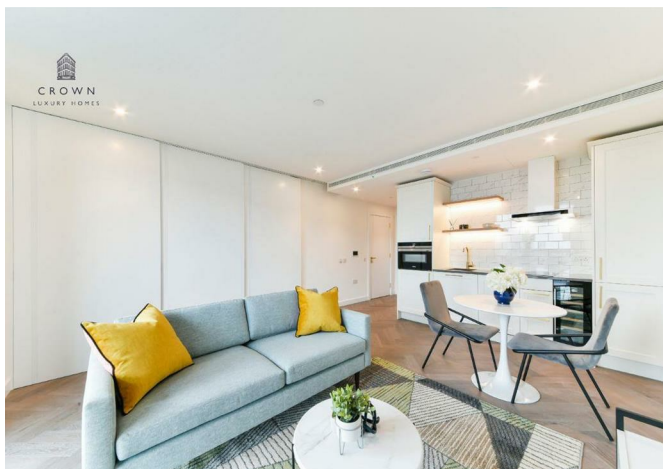
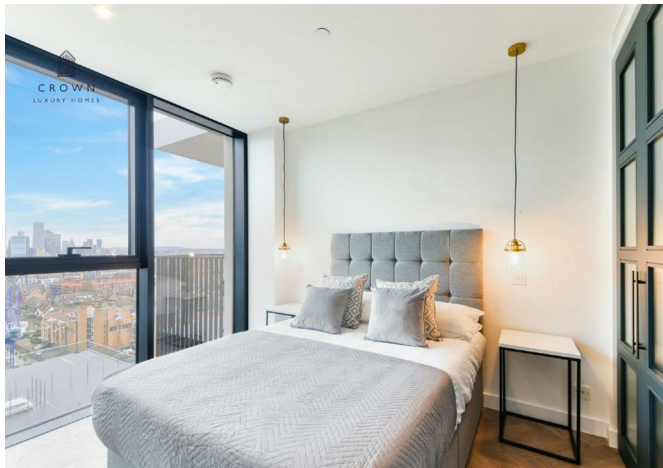




CROWN
LUXURY HOMES



Flat 1603, 23 Gauging Square, London, E1W 2AX
£3,250



Flat 1603, 23 Gauging Square, London, E1W 2AX

£3,250

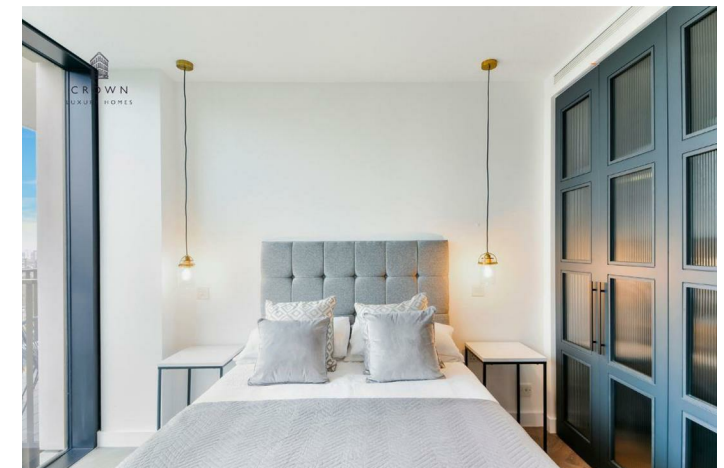
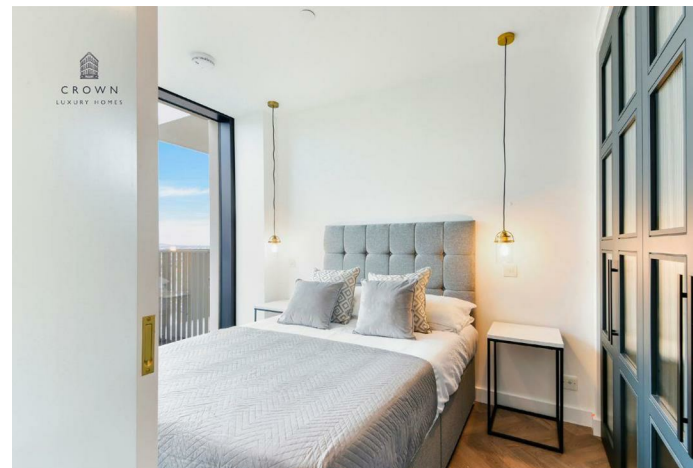
This wonderful Manhattan-style apartment has a neutral colour scheme, making it suitable for a new renter to move in and make their own. With a bright open-plan living area and access to a large balcony facing eastwards offering an uninterrupted view of Canary Wharf.

Description



Situation

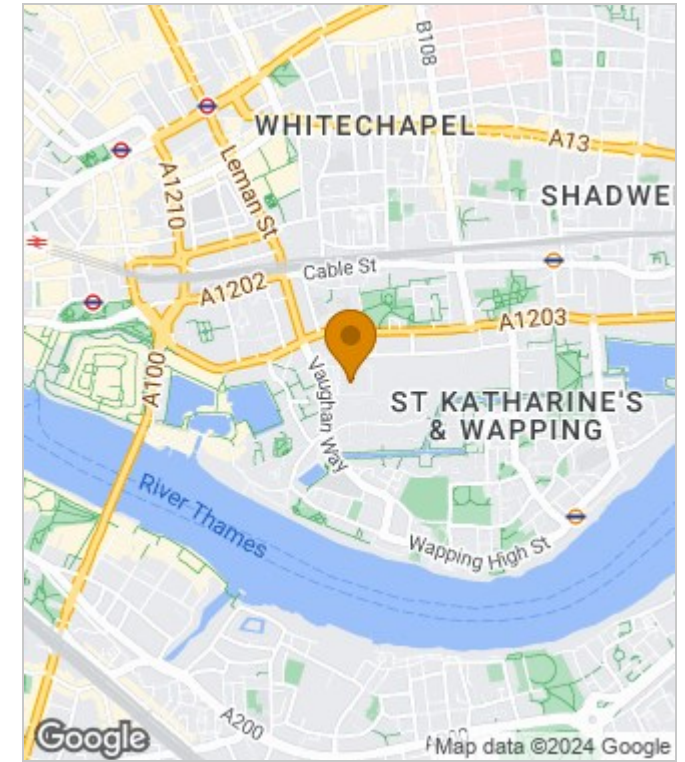
Furnished
Council Tax Band: E
Available: 2nd September 2024



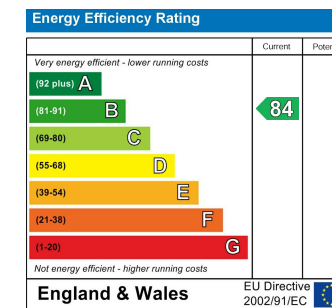
Floor Plans



Area Map



Energy Performance Graph



These particulars, whilst believed to be accurate are set out as a general outline only for guidance and do not constitute any part of an offer or contract. Intending purchasers should not rely on them as statements of representation of fact, but must satisfy themselves by inspection or otherwise as to their accuracy. No person in this firm's employment has the authority to make or give any representation or warranty in respect of the property.

International House 1 St. Katharine's Way, London, E1W1UN

Tel: +44 2035 143482 Email: lettings@crownluxuryhomes.com <https://www.crownluxuryhomes.com/>