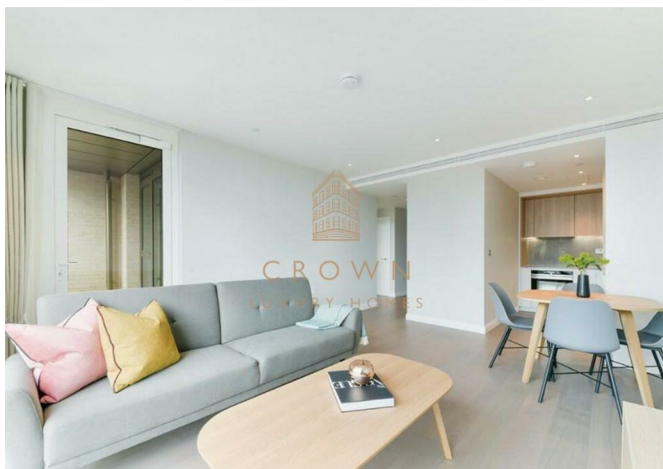
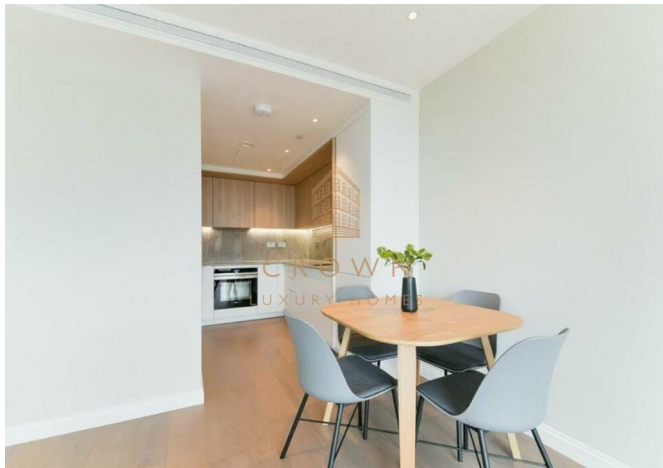


Flat 38, Phoenix Court 281 Kennington Lane, London, SE11 5AQ  
£2,750



Flat 38, Phoenix Court 281 Kennington Lane, London, SE11 5AQ

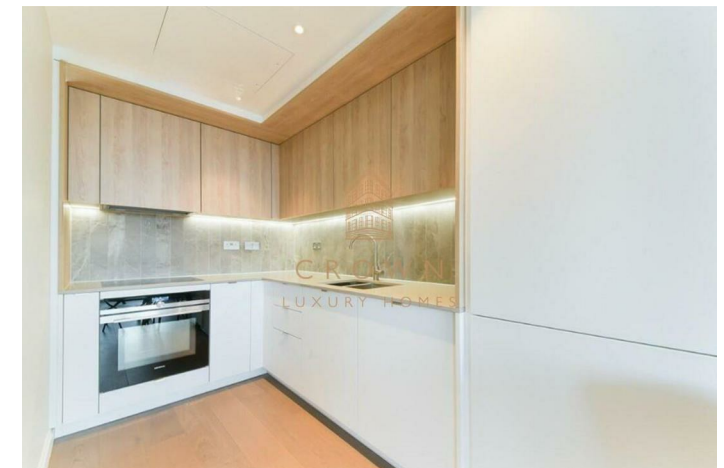
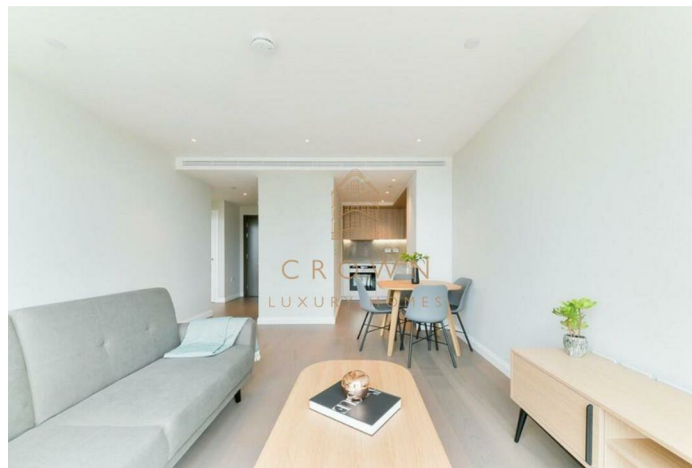
£2,750

A quaint one bedroom, one bathroom apartment; part of the Oval Village development in Kennington, SE11. Situated by the Iconic Oval cricket ground and between Vauxhall, Oval and Kennington stations makes transport connections perfect.

## Description



## Situation

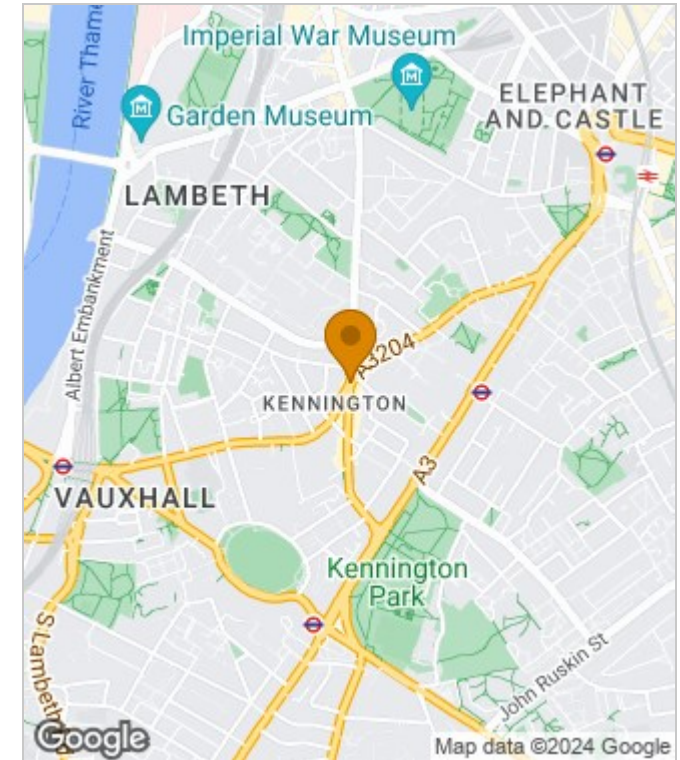


Furnished  
Council Tax Band: E  
Available: 26th June 2024

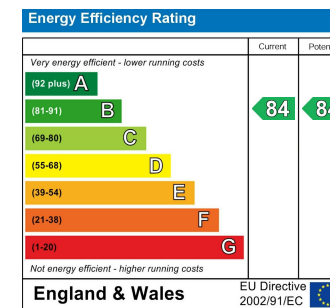
## Floor Plans



## Area Map



## Energy Performance Graph



These particulars, whilst believed to be accurate are set out as a general outline only for guidance and do not constitute any part of an offer or contract. Intending purchasers should not rely on them as statements of representation of fact, but must satisfy themselves by inspection or otherwise as to their accuracy. No person in this firm's employment has the authority to make or give any representation or warranty in respect of the property.

International House 1 St. Katharine's Way, London, E1W1UN

Tel: +44 2035 143482 Email: [lettings@crownluxuryhomes.com](mailto:lettings@crownluxuryhomes.com) <https://www.crownluxuryhomes.com/>