



217 Belvedere Row Apartments Fountain Park Way, London, W12 7LD  
£7,000



217 Belvedere Row Apartments Fountain Park Way, London, W12 7LD

£7,000

A stunning three bedroom, three bathroom apartment in Belvedere Row; part of the White City Living development. This apartment offers tremendous views of Westfield, London and beyond.

## Description

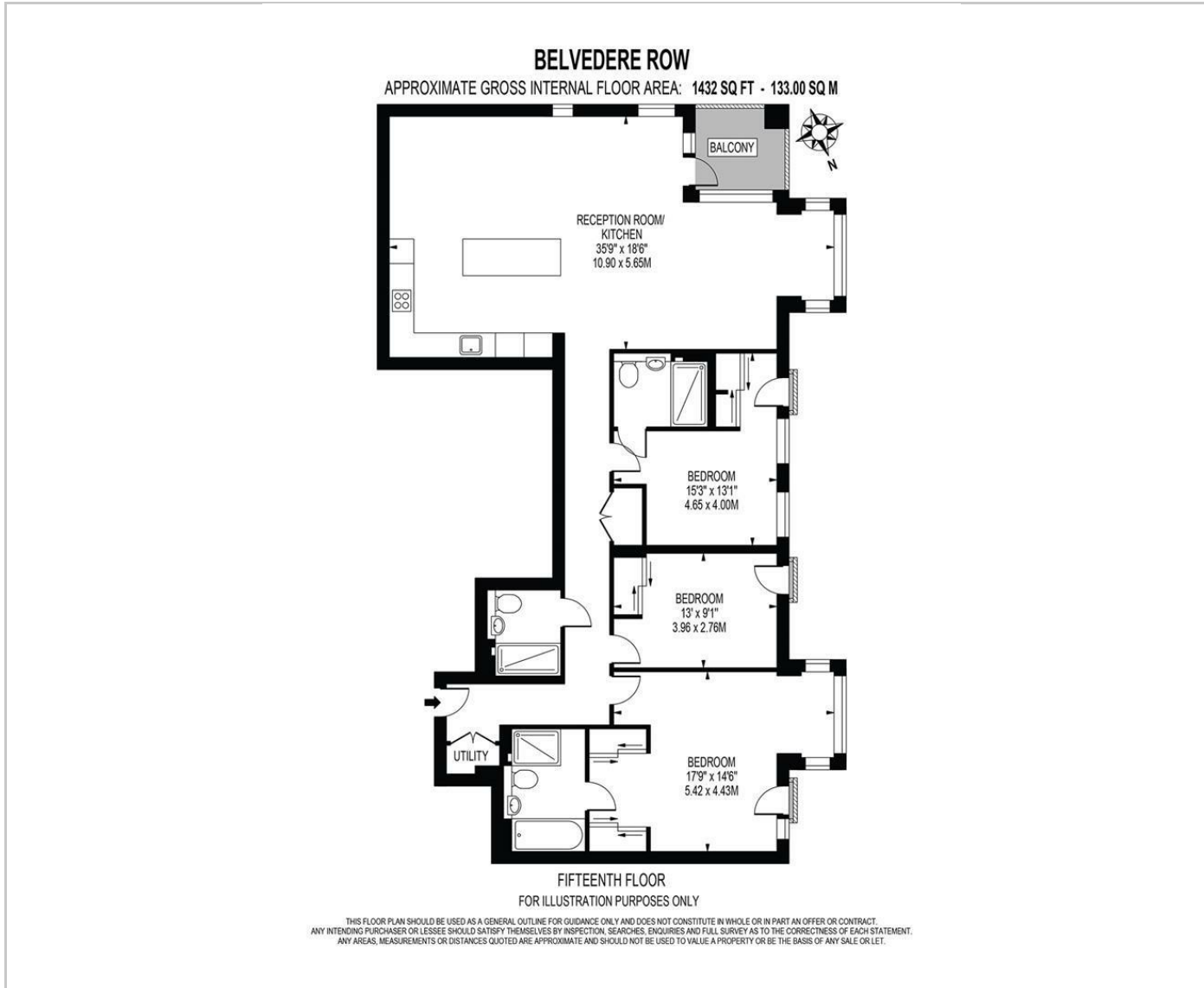


## Situation

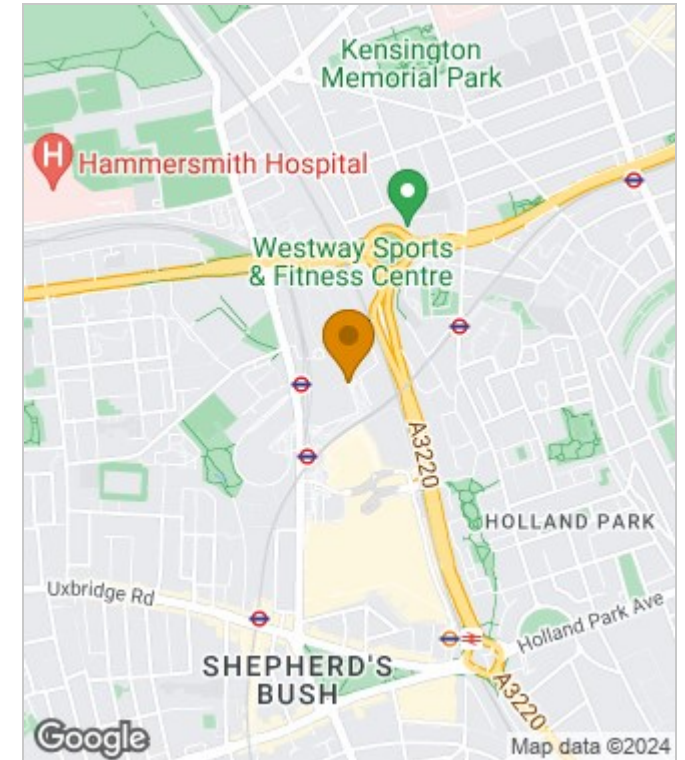


Furnished  
Council Tax Band: G  
Available: 15th May 2024

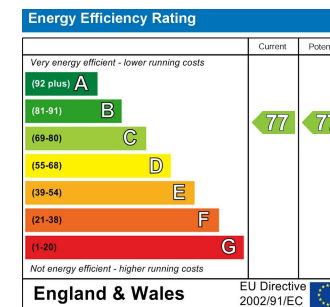
## Floor Plans



## Area Map



## Energy Performance Graph



These particulars, whilst believed to be accurate are set out as a general outline only for guidance and do not constitute any part of an offer or contract. Intending purchasers should not rely on them as statements of representation of fact, but must satisfy themselves by inspection or otherwise as to their accuracy. No person in this firm's employment has the authority to make or give any representation or warranty in respect of the property.

International House 1 St. Katharine's Way, London, E1W1UN

Tel: +44 2035 143482 Email: [lettings@crownluxuryhomes.com](mailto:lettings@crownluxuryhomes.com) <https://www.crownluxuryhomes.com/>