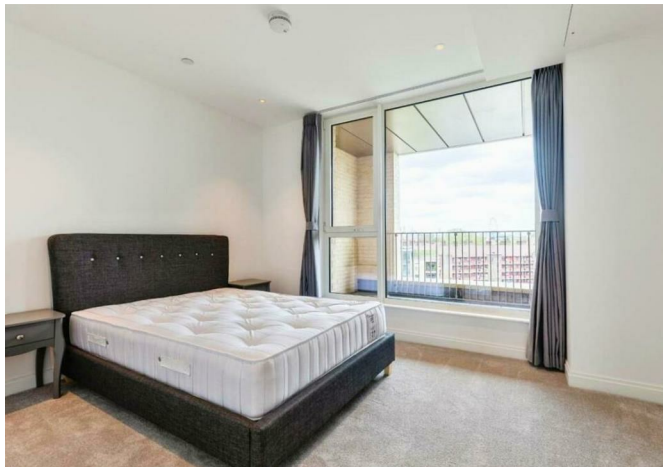


Flat 35 Phoenix Court 281 Kennington Lane, London, SE11 5AQ
£3,467



Flat 35 Phoenix Court 281 Kennington Lane, London, SE11 5AQ

£3,467

Situated in a prime location, this property in Oval Village offers easy access to all the amenities and attractions that London has to offer. From trendy cafes to beautiful parks, everything you need is just a stone's throw away.

Description



Situation

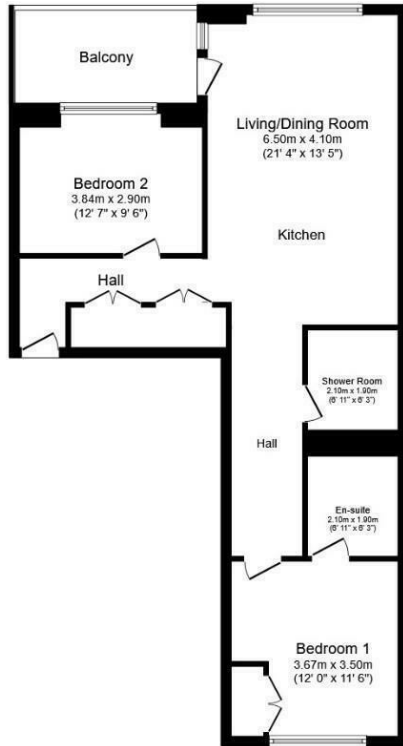


Furnished

Council Tax Band: F

Available: 19th June 2024

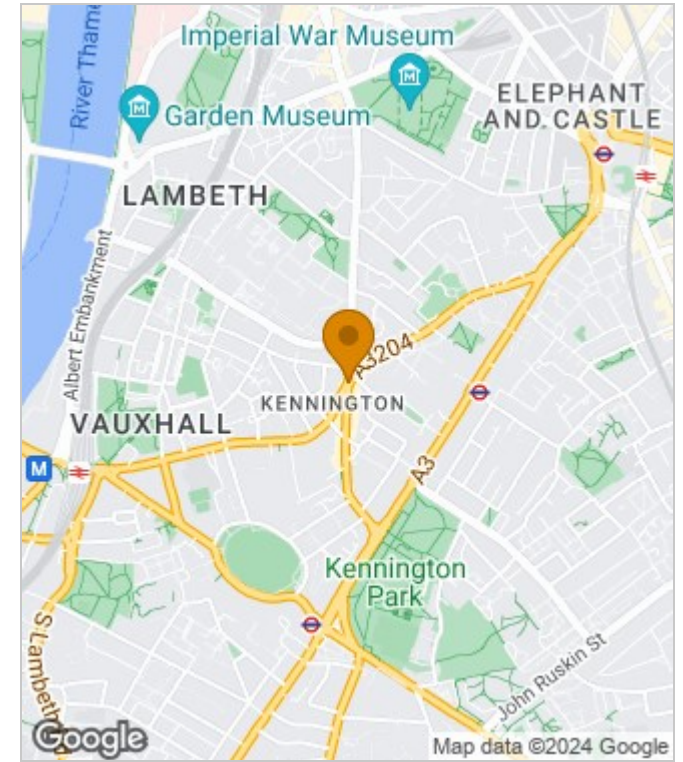
Floor Plans



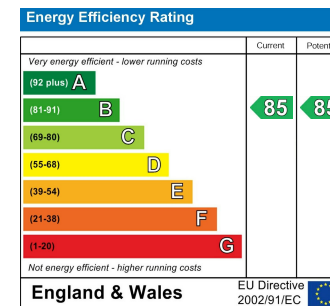
Total floor area 75.7 sq.m. (815 sq.ft.) approx

This floor plan is for illustrative purposes only. It is not drawn to scale. Any measurements, floor areas (including any total floor area), openings and orientation are approximate. No details are guaranteed, they cannot be relied upon for any purpose and they do not form part of any agreement. No liability is taken for any error, omission or misstatement. A party must rely upon its own inspection(s).
Powered by www.focalagent.com

Area Map



Energy Performance Graph



These particulars, whilst believed to be accurate are set out as a general outline only for guidance and do not constitute any part of an offer or contract. Intending purchasers should not rely on them as statements of representation of fact, but must satisfy themselves by inspection or otherwise as to their accuracy. No person in this firm's employment has the authority to make or give any representation or warranty in respect of the property.

International House 1 St. Katharine's Way, London, E1W1UN

Tel: +44 2035 143482 Email: lettings@crownluxuryhomes.com <https://www.crownluxuryhomes.com/>