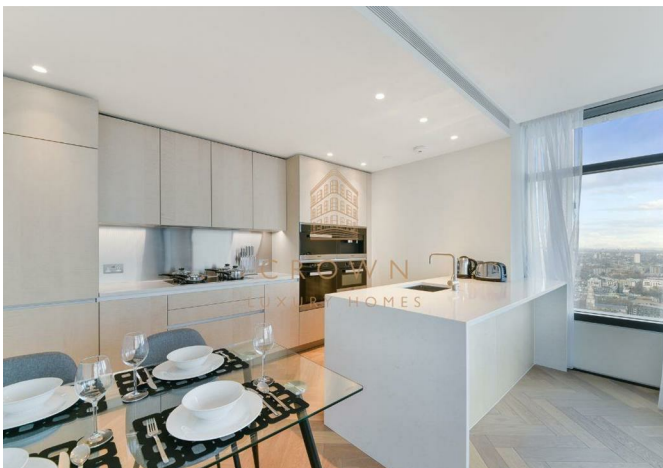




2901 2 Principal Place, London, EC2A 2FE
£5,500



2901 2 Principal Place, London, EC2A 2FE

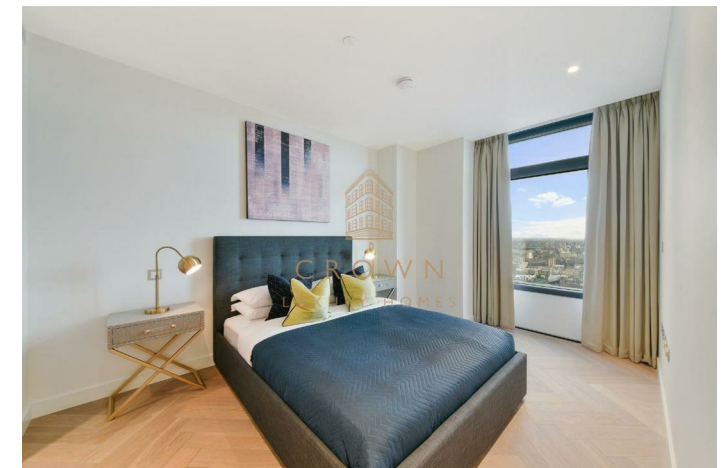
£5,500

This two-bedroom apartment is finished to the highest standard and boasts a combination of spectacular architecture and breathtaking views from the 29th floor, situated in Principal Tower, Zone 1.

Description



Situation

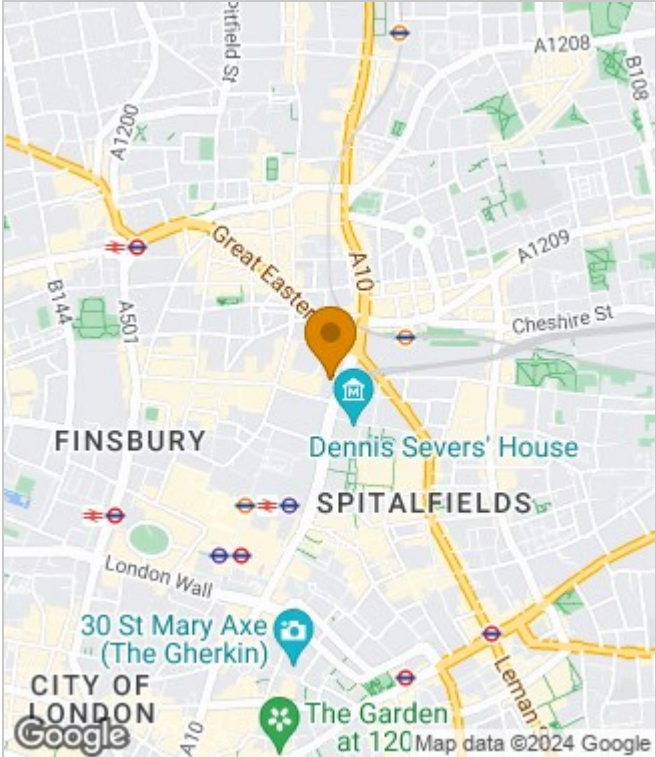


Furnished
Council Tax Band: F
Available: 19th April 2024

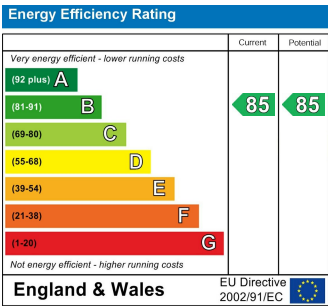
Floor Plans



Area Map



Energy Performance Graph



These particulars, whilst believed to be accurate are set out as a general outline only for guidance and do not constitute any part of an offer or contract. Intending purchasers should not rely on them as statements of representation of fact, but must satisfy themselves by inspection or otherwise as to their accuracy. No person in this firms employment has the authority to make or give any representation or warranty in respect of the property.