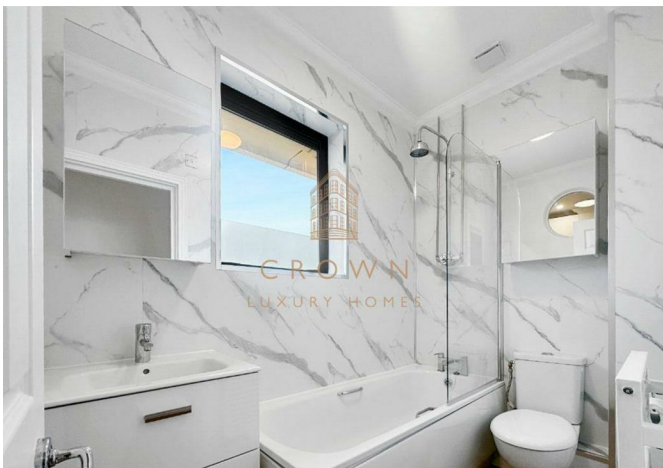




Flat 65, Ormond House Medway Street, London, SW1P 2TB
£3,000 Per month



Flat 65, Ormond House Medway Street, London, SW1P 2TB

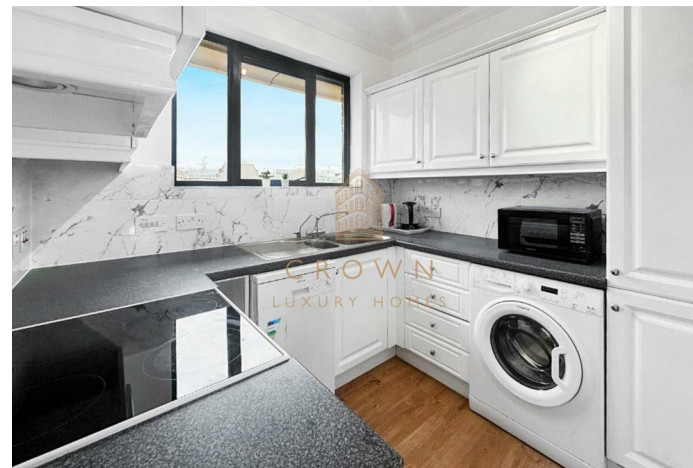
£3,000 Per month

A chic two-bedroom, one-bathroom in the SW1P area of Westminster. This lovely apartment is just a 6-minute walk to St James's Park Station.

Description



Situation

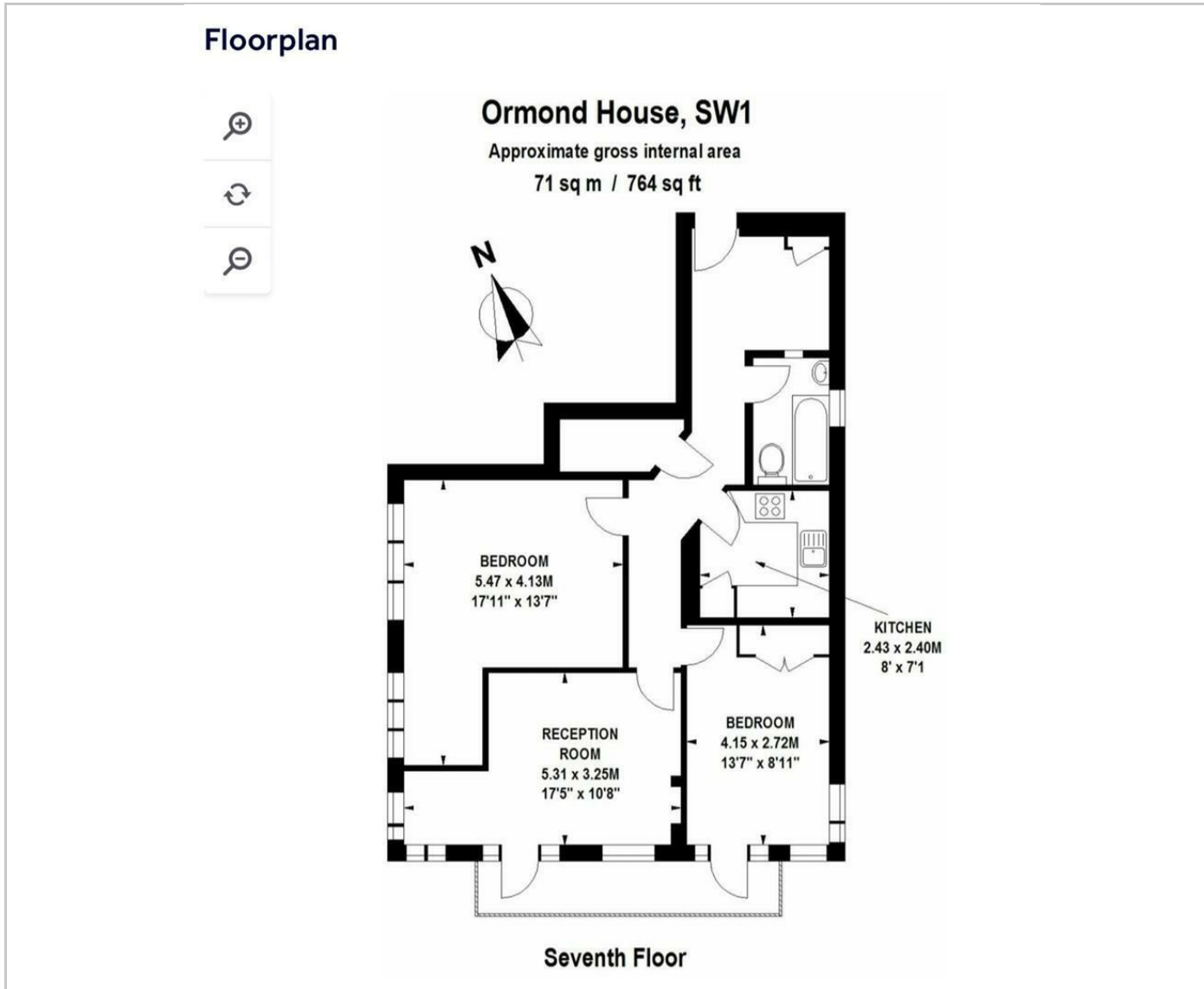


Part furnished

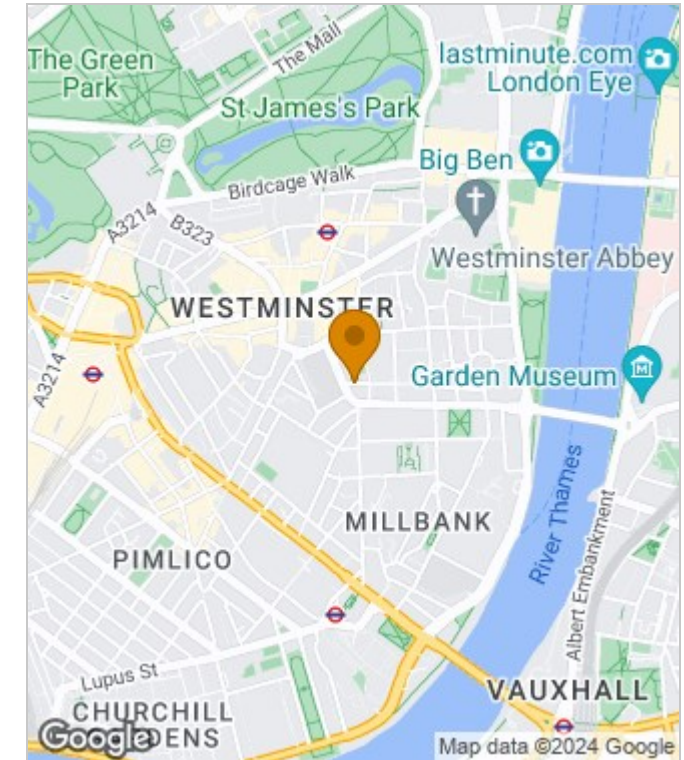
Council Tax Band: G

Available: 19th March 2024

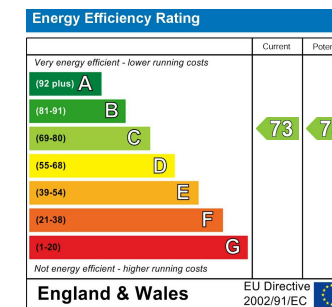
Floor Plans



Area Map



Energy Performance Graph



These particulars, whilst believed to be accurate are set out as a general outline only for guidance and do not constitute any part of an offer or contract. Intending purchasers should not rely on them as statements of representation of fact, but must satisfy themselves by inspection or otherwise as to their accuracy. No person in this firm's employment has the authority to make or give any representation or warranty in respect of the property.