



# Croft Cottage

Greensfield Moor Farm,  
Alnwick

£380,000

**Council Tax band: TBD**

**Tenure: Freehold**

**EPC Energy Efficiency Rating: C**

**EPC Environmental Impact Rating: C**

- Successful Holiday Let
- Stone Built Cottage
- Three Bathrooms
- Three Double Bedrooms
- No Upper Chain
- Well Presented
- Close to Town
- Large Patio and Lawned Garden



Northumberland  
Properties



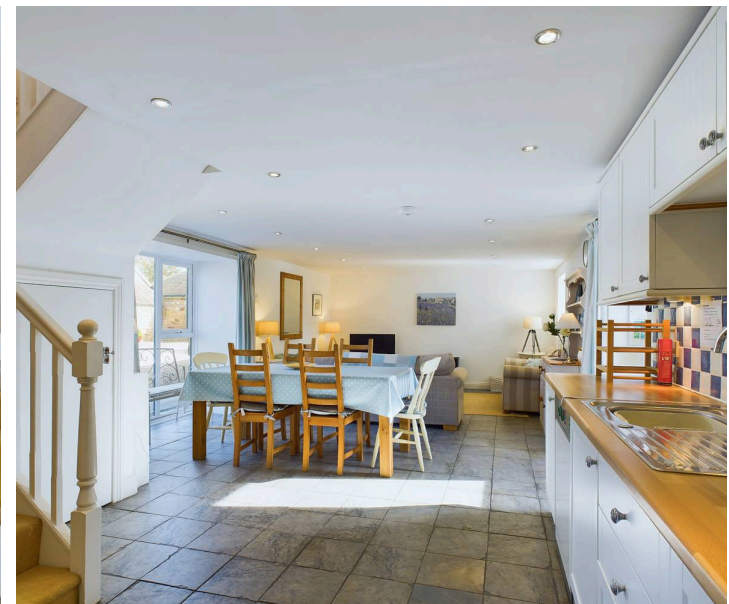
Northumberland Properties are excited to welcome to the market Croft Cottage, a charming stone-built property located in Alnwick, offering the perfect blend of countryside tranquillity and convenient access to local amenities.

Successfully run as a holiday cottage and enjoyed as a second home, the property enjoys close proximity to local amenities and historic attractions, whilst retaining a rural atmosphere, surrounded by beautiful countryside.

The property boasts three double bedrooms, two of which feature modern ensuite bathrooms, providing both comfort and privacy for guests or family members. The third bedroom is served by a family bathroom, ensuring ample facilities for all. The heart of the cottage is the bright and airy open-plan living space, which seamlessly integrates the lounge, dining, and kitchen areas, making it an ideal setting for socialising and family gatherings.

To the rear of the property, a lovely patio offers a relaxing space for outdoor dining, while the sizeable lawned garden, made private by mature trees, offers endless possibilities.

Croft Cottage benefits from excellent transport links, with the A1 just a short drive away, connecting you to major routes across the region. The vibrant market town of Alnwick, with its schools, healthcare, and leisure facilities, is within easy reach.





## **GARDEN**

Garden to the rear of the property. Patio and separate large lawned area.

## **OFF STREET**

1 Parking Space









## Northumberland Properties

12 Market Street, Alnwick – NE66 1TL

01665660910 • [info@northumberlandproperties.co.uk](mailto:info@northumberlandproperties.co.uk) • [www.northumberlandproperties.co.uk](http://www.northumberlandproperties.co.uk)



Northumberland  
Properties