



1 West Farm Steadings

Nedderton Village, Bedlington

£580,000

Tenure: Freehold

- Barn Conversion
- Three Double Bedrooms
- Beautifully Presented
- Mature Gardens
- Countryside Views
- Exposed Beams
- Feature Fireplace
- Extra Large Detached Garage



Northumberland
Properties

This charming three bedroom barn conversion, set within a small farm steading, offers a perfect blend of rural tranquillity and modern convenience.

The property is a short drive from the vibrant market town of Morpeth, and convenient for the A1, making it ideal for those seeking peaceful countryside living without compromising on access to local amenities and great transport links.

Beautifully presented throughout, this characterful home includes traditional barn features while providing all the modern comforts you could wish for. The living room boasts a stunning fireplace, exposed beams, complemented by a charming mezzanine level that adds extra character and a versatile space, perfect for a cosy reading nook, home office, or additional seating area, while maintaining a connection to the main living space below.



The spacious accommodation includes three double bedrooms, with the main bedroom benefiting from a generous sized ensuite. The modern kitchen and bathrooms are finished to a high standard, combining style and practicality.

Another standout feature of this property is its stunning mature garden. Lovingly maintained and private, perfect for relaxing, entertaining, or simply enjoying the outdoors.

A key highlight of this property is its exceptionally large three-car garage. This expansive space offers not only secure parking for multiple vehicles but also fantastic potential for additional storage, a workshop, or even a home gym.

In such a sought-after location, combining character, modern living, and excellent transport connections, this beautifully maintained barn conversion is a rare find and not to be missed.





First Floor Building 1



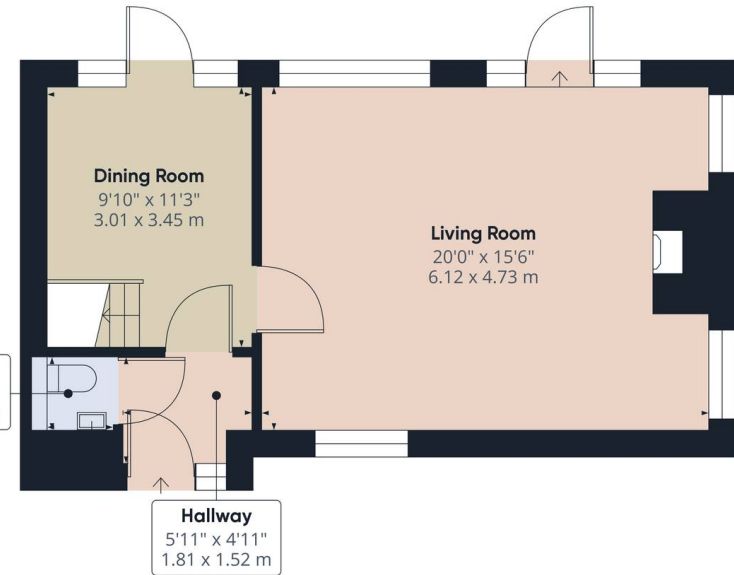
Approximate total area⁽¹⁾
2130.93 ft²
197.97 m²

(1) Excluding balconies and terraces

While every attempt has been made to ensure accuracy, all measurements are approximate, not to scale. This floor plan is for illustrative purposes only.

Calculations are based on RICS IPMS 3C standard.

GIRAFFE360



First Floor Building 1



Approximate total area⁽¹⁾
468.77 ft²
43.55 m²

(1) Excluding balconies and terraces

While every attempt has been made to ensure accuracy, all measurements are approximate, not to scale. This floor plan is for illustrative purposes only.

Calculations are based on RICS IPMS 3C standard.

GIRAFFE360



Floor 1 Building 1

First Floor Building 2



Northumberland Properties

12 Market Street, Alnwick - NE66 1TL

01665660910 • info@northumberlandproperties.co.uk • <http://northumberlandproperties.co.uk>



Northumberland
Properties