



The Old Court House

Whittingham, Alnwick
Offers Over £600,000

- Grade II Listed
- Includes Paddock
- Historic Property
- Village Location
- Beautifully Presented
- Unique Features
- Versatile Living
- Private Courtyard

Council Tax band: E

Tenure: Freehold

EPC Energy Efficiency Rating: D

EPC Environmental Impact Rating: E



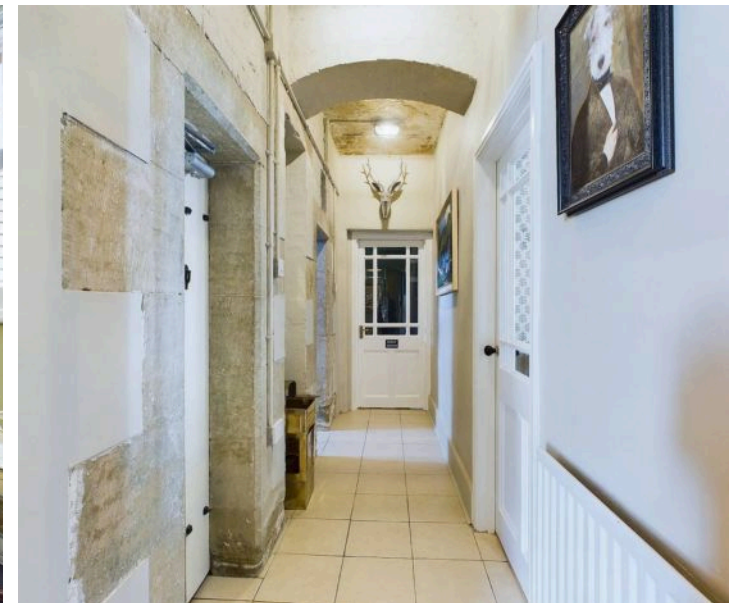
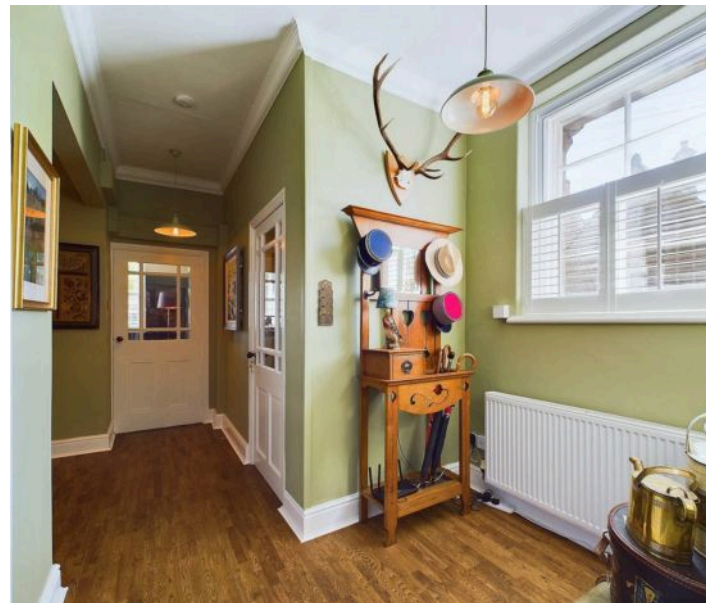
Northumberland
Properties

Northumberland Properties is delighted to welcome to the market The Old Court House, a stunning Grade II listed building located in the picturesque village of Whittingham. This exquisitely presented home blends historic charm with modern living, featuring original elements such as the old jail cells and a magnificent room that once served as the courtroom, now an impressive living area.

The property offers spacious living, with multiple elegant reception rooms and three generously sized double bedrooms, perfect for family living or entertaining.

The property also boasts a detached double garage, complete with a garden room to the rear, offering a bright and peaceful space to relax. The garden room opens onto a low-maintenance garden area, which leads to a large paddock—perfect for those seeking expansive outdoor space.

Situated in the heart of Whittingham, this tranquil Northumberland village is surrounded by rolling countryside yet is just a short drive from the historic market town of Alnwick. With its rich history, spacious interiors, and stunning grounds, The Old Court House is a truly unique home that offers an exceptional opportunity to enjoy village life in a property with character and grandeur.



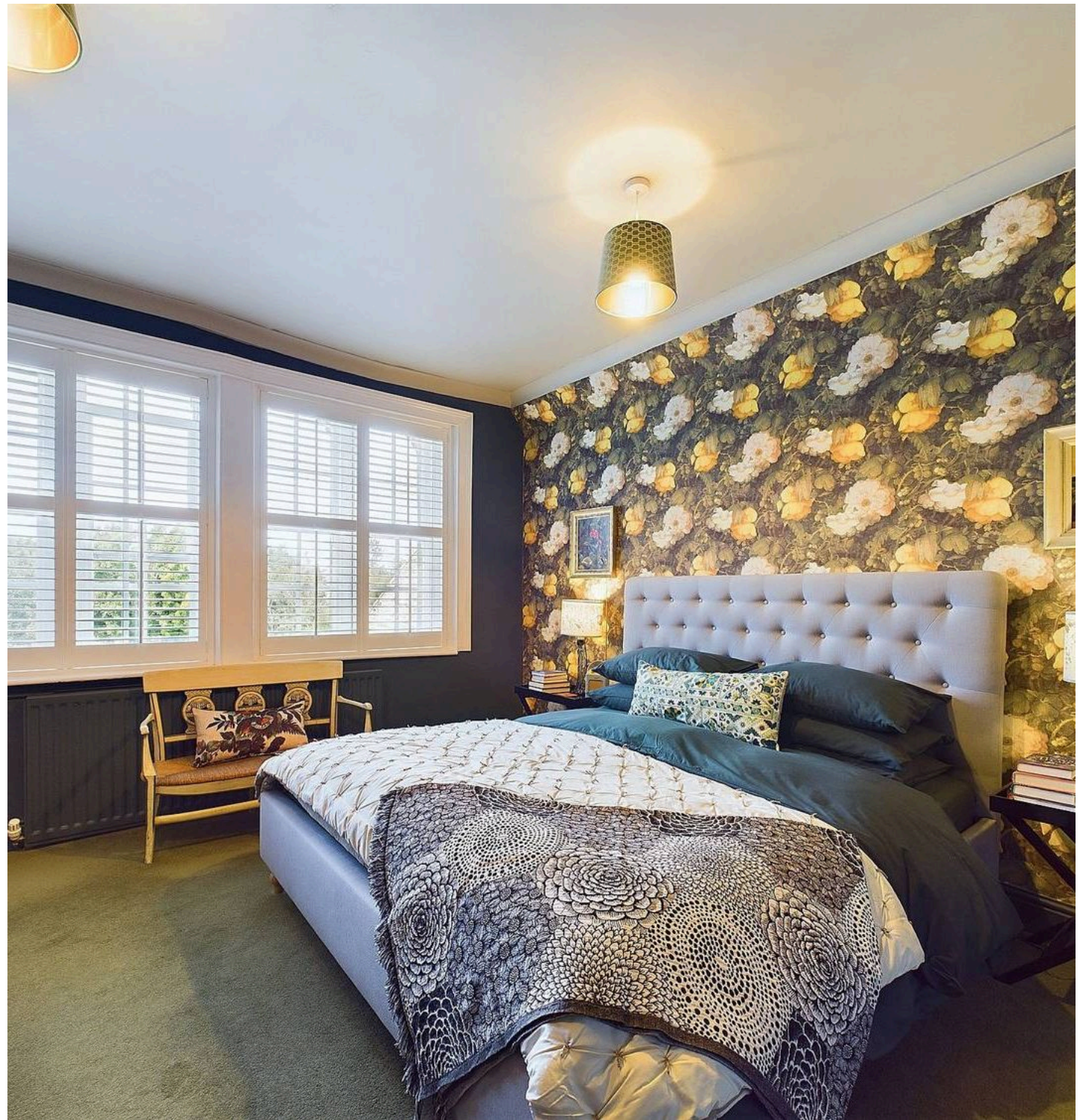
GARDEN

Private courtyard with the addition of garden room which leads to a raised deck area. Low-maintenance garden leading to large paddock.

GARAGE

Double Garage

Large detached double garage







Northumberland Properties

12 Market Street, Alnwick - NE66 1TL

01665660910 • info@northumberlandproperties.co.uk • <http://northumberlandproperties.co.uk>



Northumberland
Properties