



The Old Court House

Whittingham, Alnwick

£635,000

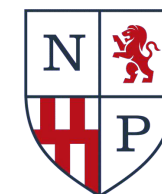
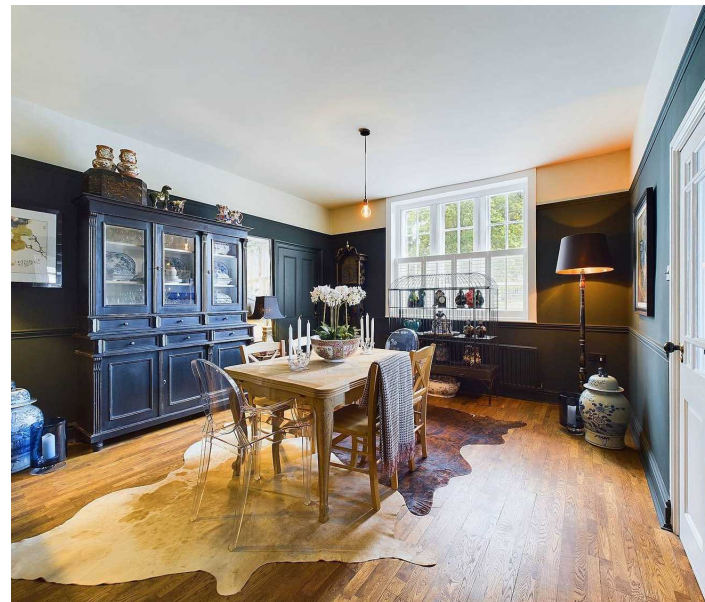
- Grade II Listed
- Includes Paddock
- Historic Property
- Village Location
- Beautifully Presented
- Unique Features
- Versatile Living
- Private Courtyard

Council Tax band: E

Tenure: Freehold

EPC Energy Efficiency Rating: D

EPC Environmental Impact Rating: E



Northumberland
Properties

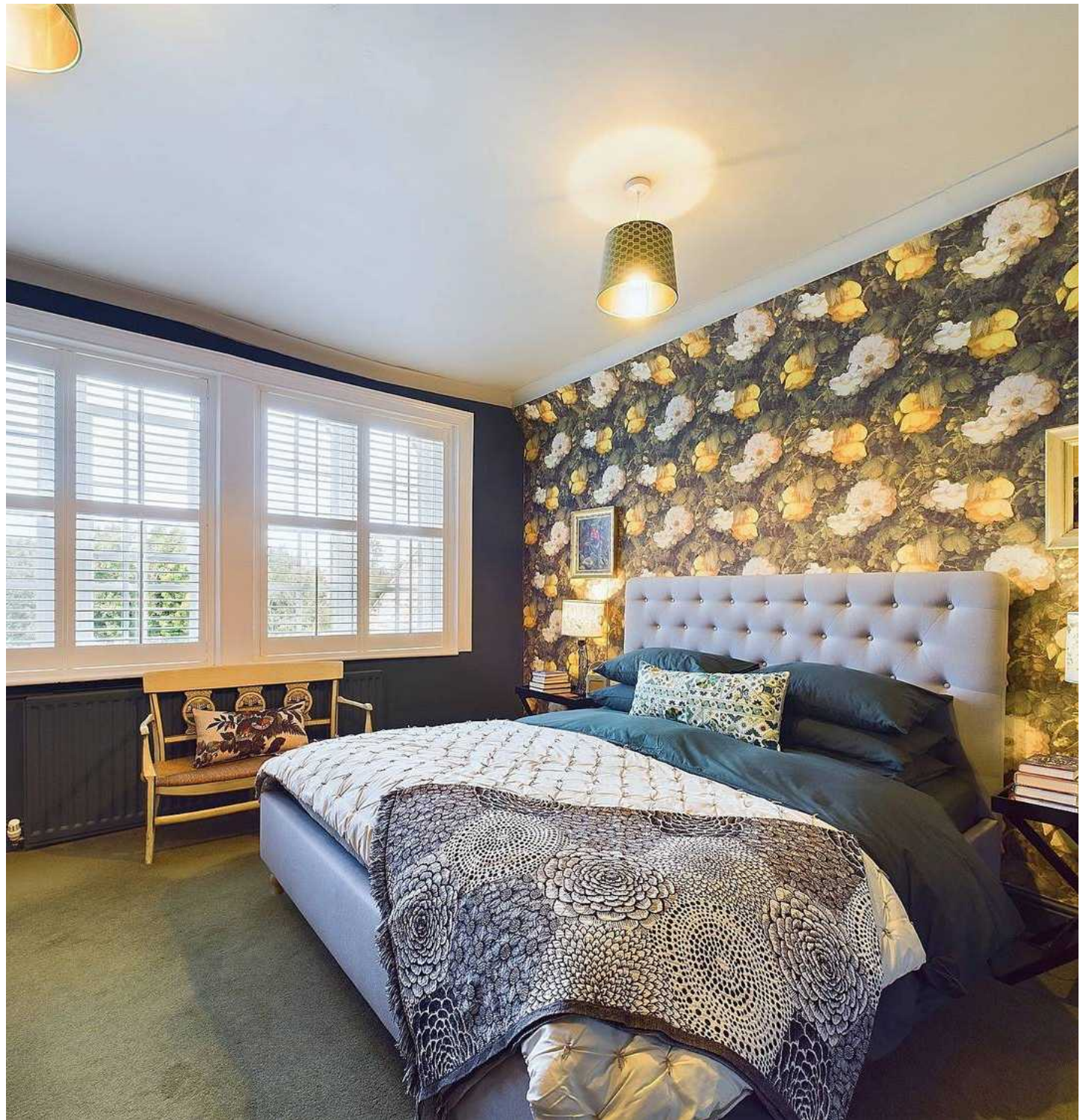
GARDEN

Private courtyard with the addition of garden room which leads to a raised deck area. Low-maintenance garden leading to large paddock.

GARAGE

Double Garage

Large detached double garage



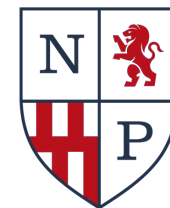




Northumberland Properties

12 Market Street, Alnwick - NE66 1TL

01665660910 • info@northumberlandproperties.co.uk • <http://northumberlandproperties.co.uk>



Northumberland
Properties