



37 REDLANDS CLOSE, SOLIHULL, B91 2LZ

ASKING PRICE OF £380,000





Encasa are delighted to introduce this fully modernised, three bedroom semi-detached property situated near the heart of Solihull. This perfect family home offers; three bedrooms, extended kitchen/diner with snug room, lounge, and a modern family bathroom. To the rear you'll find a large garden with a brick built garage.

The extended kitchen is ideal for entertaining and has bifold doors which open onto a patio area, complementing the private rear garden. This charming home has plenty of living space for the modern family with a 'walk-in -wardrobe' being a notable feature to the master bedroom.

Conveniently situated just a short journey away from Solihull town centre, restaurants, shops and schools are all nearby, ideal for young families. Birmingham International & Solihull Station are also in close proximity offering regular transport.

A viewing is highly recommended to appreciate what's on offer in this stunning home. For any further information, please call our sales team.

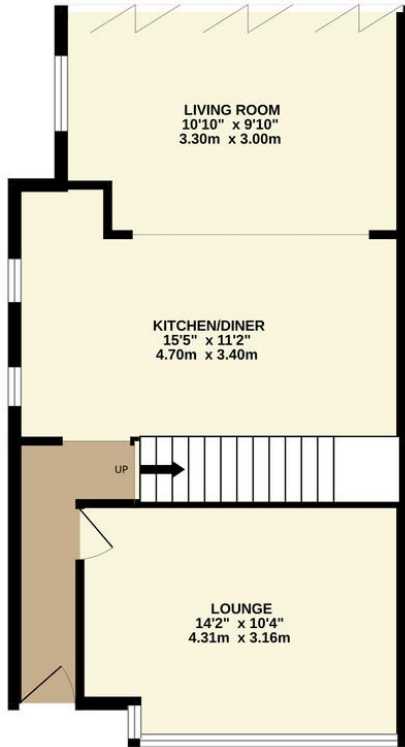




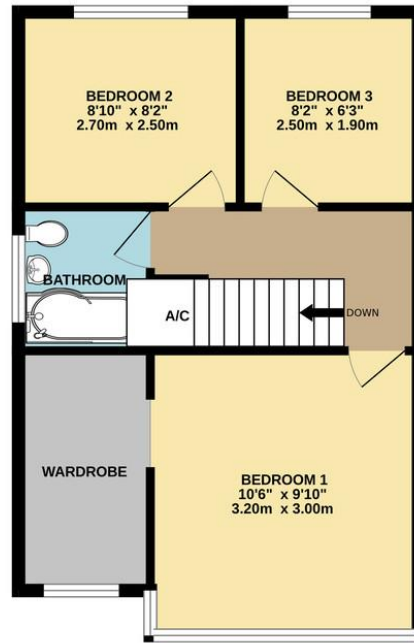




GROUND FLOOR



1ST FLOOR



Whilst every attempt has been made to ensure the accuracy of the floorplan contained here, measurements of doors, windows, rooms and any other items are approximate and no responsibility is taken for any error, omission or mis-statement. This plan is for illustrative purposes only and should be used as such by any prospective purchaser. The services, systems and appliances shown have not been tested and no guarantee as to their operability or efficiency can be given.

Score	Energy rating	Current	Potential
92+	A		
81-91	B		85 B
69-80	C		
55-68	D		
39-54	E	52 E	
21-38	F		
1-20	G		