



Marsted, Pean Court Road

£1,350,000

RD
PROPERTY
ESTATE AGENCY

ryan@rdpropertysales.co.uk
07739 880 349

Marsted, Pean Court Road

Welcome to this beautifully renovated chalet, where luxury meets practicality in every corner. With four spacious bedrooms, including a convenient downstairs bedroom with its own dressing room and en-suite bathroom, comfort is never compromised. Upstairs, you'll find three further bedrooms and a family bathroom, with the second bedroom also boasting its own en-suite for added convenience. Step outside to enjoy the expansive garden, perfect for outdoor gatherings or simply relaxing in the fresh air. Plus, there's a versatile out house that could be transformed into a bar, gym, or home office to suit your needs. Parking is a breeze with a driveway and electric gates, providing both security and convenience for you and your guests. Pean Court Road is located in a quiet location, whilst benefitting from convenient access to coastal Whitstable and the Cathedral City of Canterbury.

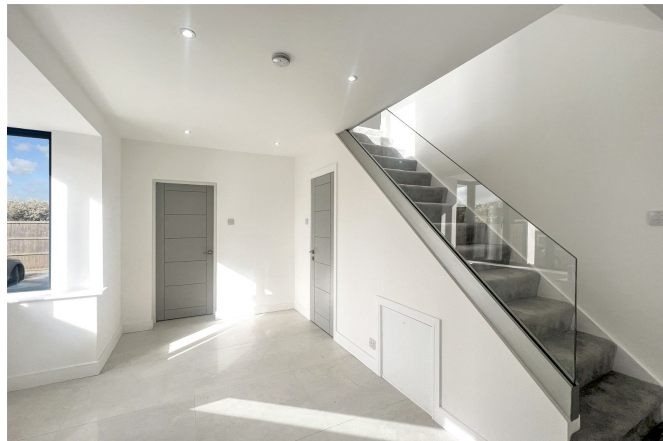














Whilst we as Estate Agents on behalf of the vendors endeavour to ensure the accuracy of property details produced and displayed, we have not tested any apparatus, equipment, fixtures and fittings or services and so cannot verify that they are connected, in working order or fit for the purpose. Neither have we had sight of the legal documents to verify the Freehold or Leasehold status of any property. A Buyer is advised to obtain verification from their Solicitor and/or Surveyor. A Buyer must check the availability of any property and make an appointment to view before embarking on any journey to see a property. The Vendors have checked and approved these particulars.

IMPORTANT

These particulars are intended to give a fair description, but their accuracy cannot be guaranteed, and are not to be taken as forming any part of a resulting contract. They are issued on the basis the property is still available and on the understanding that all negotiations are conducted through the agents.