



7 Charnwood Court

Lydney, GL15 5TB

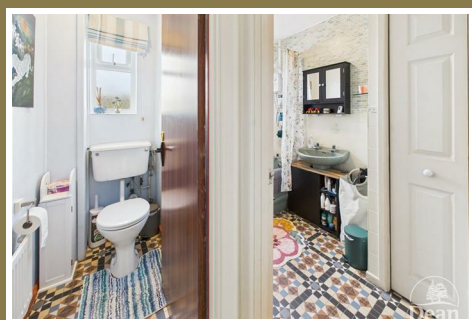
Offers Over £230,000



*** VIRTUAL TOUR AVAILABLE *** With the most private gardens, detached garage and parking for several vehicles, we urge your viewing on this two bedroom bungalow located in a quiet cul-de-sac.

The property has gas central heating, double glazed windows, bathroom and separate WC.

Charnwood Court is a small no through road with similar property, a nice, sought after open plan area. Situated a short distance from Lydney town centre, you have the necessary amenities on your doorstep to include supermarkets, pharmacies, doctor, dental surgeries and woodland walks.



Approached via two separate side entrance doors:

Entrance Hallway:

Being an L shaped hall with tessellated tiled effect flooring, radiator, doors to bedrooms, bathroom, lounge and cloakroom. Smoke alarm.

Cloakroom:

With WC, radiator and UPVC double glazed window.

Bathroom:

Comprising of bath with electric shower, wash hand basin, extractor fan, tiled walling, mirrored medicine cabinet, UPVC double glazed window, access to the partly boarded loft space, radiator, linen/utility cupboard.

Lounge:

Front aspect with an attractive UPVC double glazed bay window, electric fire within a wooden fire surround, wall lights, TV aerial point, radiator and door to the entrance hall.

Kitchen:

Front aspect with base units, drawers, wall cupboards, sink unit, electric cooker point, Worcester gas boiler, strip light, coved ceiling, breakfast bar, radiator, door to side driveway, plumbing for washing machine, door to lounge.

Bedroom One:

Rear aspect with UPVC double glazed window, radiator and power points.

Bedroom Two:

Rear aspect with UPVC double glazed window, radiator and power points.

Outside:

To the front wall is a stocked gravelled garden, off road parking and iron gates leading to the side aspect. The side hosts further parking and outside lighting, two separate entrance doors to the bungalow and eventually leading to the detached garage and gate to the rear gardens.

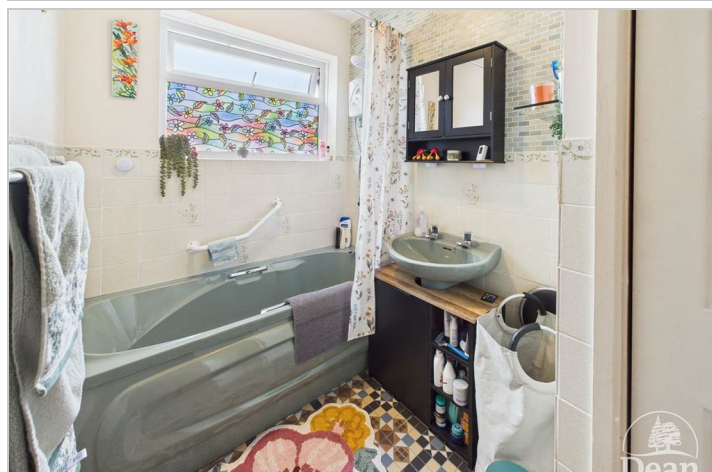
The enclosed and very private rear gardens have lawn, shrub borders with seasonal flowering plants, outside light, side door to the garage, pergola leading through to the gravelled rear cottage style garden.

This area hosts a summerhouse with double doors, power and lighting.

There is a further gravelled area to the side of the summerhouse ideal for storage.

Garage:

The garage has a metal double doors, power and lighting, side courtesy door to the gardens.



Consumer Notes: Dean Estate Agents Ltd have prepared the information within this website/brochure with care and co-operation from the seller. It is intended to be indicative rather than definitive, without a guarantee of accuracy. Before you act upon any information provided, we request that you satisfy yourself about the completeness, accuracy, reliability, suitability or availability with respect to the website or the information, products, services, or related graphics contained on the website for any purpose. Confirmation of the title, boundary plan, sellers situation must be confirmed with you before any expense is incurred.

If there are any changes to the fixtures, fittings and relevant aspects of the property since the commencement of marketing, we have asked the vendor to notify us immediately. Please also confirm to your satisfaction the services connected to the property and any planning consents.

These details do not constitute any part of any Offer, Contract or Tenancy Agreement.

Photographs used for advertising purposes may not necessarily be the most recent photographs. Any reliance you place on such information is therefore strictly at your own risk. All photographic images are under the ownership of Dean Estate Agents Ltd and therefore Dean Estate Agents Ltd retain the copyright. You must obtain permission from the owner of the images to reproduce them.

Tenanted Property – we are not always able to show the most recent condition of a property due to tenants' privacy and we may choose to show the photographs of the property when it was last vacant to at least allow clients some idea of the internal condition. Therefore, we would of course, urge you to view the property before making any decisions to purchase or rent the property and before committing to any costs. An offer to purchase any property will be considered after a physical viewing has taken place.

Road Map



Hybrid Map



Terrain Map



Floor Plan

Floor 0 Building 1

Floor 0 Building 2

Floor 0 Building 3

Approximate total area⁽¹⁾

884 ft²

82.2 m²

(1) Excluding balconies and terraces

While every attempt has been made to ensure accuracy, all measurements are approximate, not to scale. This floor plan is for illustrative purposes only.

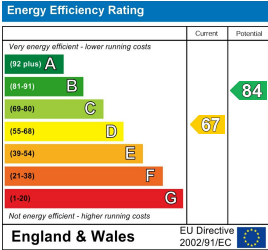
Calculations are based on RICS IPMS 3C standard.

GIRAFFE360

Viewing

Please contact our Lydney Office on 01594 368202 if you wish to arrange a viewing appointment for this property or require further information.

Energy Efficiency Graph



These particulars, whilst believed to be accurate are set out as a general outline only for guidance and do not constitute any part of an offer or contract. Intending purchasers should not rely on them as statements of representation of fact, but must satisfy themselves by inspection or otherwise as to their accuracy. No person in this firms employment has the authority to make or give any representation or warranty in respect of the property.

