



21 Charnwood Court

Lydney, GL15 5TB

£275,000



Dean Estate Agents are pleased to present this Three Bedroom Dormer Style Semi-Detached Bungalow situated on the outskirts of Lydney Town. The property benefits from Three Bedrooms, Master Bedroom with En-suite, Lounge/Diner, Kitchen, Bathroom, Car Port/Driveway and Enclosed Rear Garden.



Entrance Hallway;

A spacious entrance hall, radiator, power points. Doors leading to: Bedroom 3, Bedroom 2, Bathroom & Lounge/Diner.

Bathroom;

8'6" x 4'11" (2.61m x 1.50m)

Airing cupboard with plumbing for washing machine, bath with overhead shower, w.c, wash hand basin, window to side aspect, extractor fan.

Bedroom Three;

8'3" x 8'9" (2.54m x 2.67m)

carpet flooring, window to rear aspect, radiator, power points.

Bedroom Two;

8'11" x 10'10" (2.74m x 3.32m)

carpet flooring, window to rear aspect, radiator, power points.

Kitchen;

9'0" x 8'4" (2.76m x 2.56m)

A range of wall, base and drawer units, range cooker with extractor hood over, tiled splashbacks, one and a half stainless steel basin and drainer, space for fridge/freezer, ceiling light, window to front aspect, door leading out to side aspect/driveway.

Spacious Lounge/Diner;

18'9" x 11'4" (5.72m x 3.47m)

Light & airy room, wood effect flooring, TV point, power points, window to front aspect.

Stairs leading to first floor;

2'7" x 3'5" (0.80m x 1.06m)

Bedroom One;

21'3" x 12'10" (6.50m x 3.92m)

Window to rear aspect, velux window to front aspect, carpet flooring, a very spacious room benefitting from built-in wardrobes and en-suite.

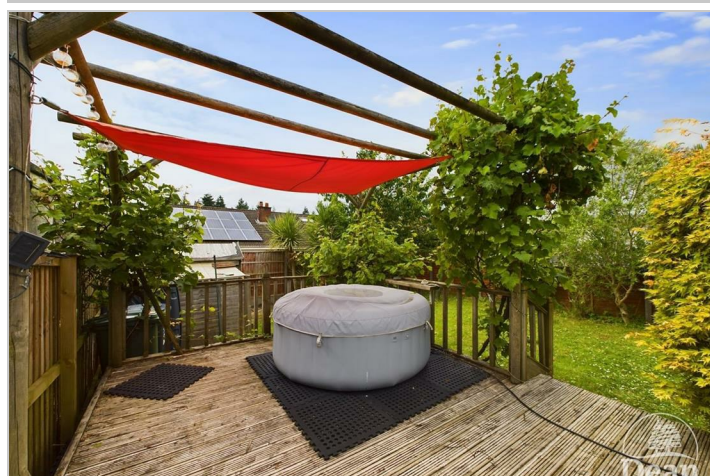
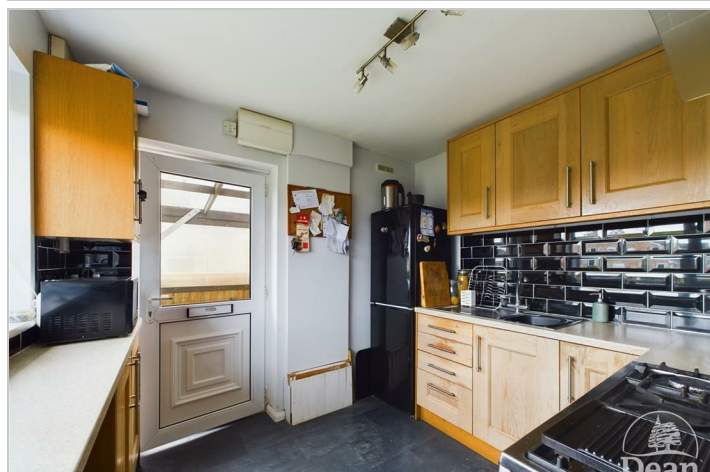
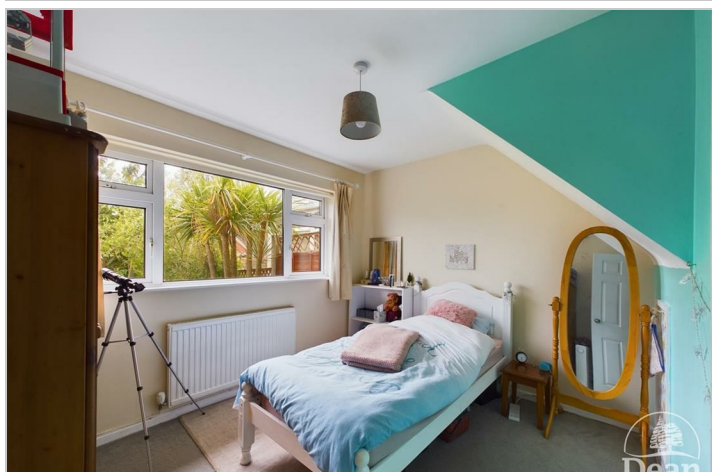
En-Suite;

11'8" x 5'11" (3.58m x 1.81m)

Shower cubicle, w.c, wash hand basin, velux window to front aspect, vertical wall mounted radiator, spotlights, extractor fan, storage cupboard.

Outside;

Enclosed, private rear garden, laid to lawn with a decking area perfect for a hot tub/seating area. Benefiting from a car port, and driveway for 2 vehicles.



Consumer Notes: Dean Estate Agents Ltd have prepared the information within this website/brochure with care and co-operation from the seller. It is intended to be indicative rather than definitive, without a guarantee of accuracy. Before you act upon any information provided, we request that you satisfy yourself about the completeness, accuracy, reliability, suitability or availability with respect to the website or the information, products, services, or related graphics contained on the website for any purpose.

These details do not constitute any part of any Offer, Contract or Tenancy Agreement.

Photographs used for advertising purposes may not necessarily be the most recent photographs, although every effort is made to update photographs at the earliest opportunity. Any reliance you place on such information is therefore strictly at your own risk. All photographic images are under the ownership of Dean Estate Agents Ltd and therefore Dean Estate Agents retain the copyright. You must obtain permission from the owner of the images to reproduce them.

Tenanted Property – we are not always able to show the most recent condition of a property due to tenants' privacy and we may choose to show the photographs of the property when it was last vacant to at least allow clients some idea of the internal condition. Therefore, we would of course, urge you to view before making any decisions to purchase or rent the property and before any costs.

Energy Performance Certificates are supplied to us via a third party and we do not accept responsibility for the content within such reports.

PRC Certificates – Some ex-local authority properties have been repaired in recent years using the PRC Scheme wherein a certificate has been produced by a qualified property engineer. This certificate does not imply the suitability for a mortgage approval and you must satisfy yourself of the work carried out that may meet your lenders criteria.

As with leasehold property or new build development sites, you are likely to be responsible for a contribution to management charges and/or ground rent or a contribution to the development service charge. Please enquire at the time of viewing.

You may also incur fees for items such as leasehold packs and, in addition, you will also need to check the remaining length of any lease before you complete a mortgage application form. Please ask a member of our team for any help required before committing to purchase a property and incurring expense.

Road Map



Hybrid Map



Terrain Map



Floor Plan

Floor 0

Floor 1

Approximate total area¹⁸
966.06 ft²
89.75 m²

Reduced headroom
72.01 ft²
6.69 m²

(1) Excluding balconies and terraces

Reduced headroom (below 1.5m/4.92ft)

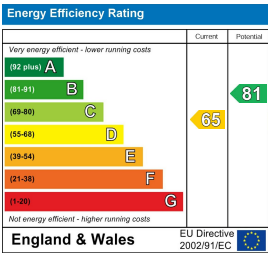
While every attempt has been made to ensure accuracy, all measurements are approximate, not to scale. This floor plan is for illustrative purposes only.

GIRAFFE 360

Viewing

Please contact our Lydney Office on 01594 368202 if you wish to arrange a viewing appointment for this property or require further information.

Energy Efficiency Graph



These particulars, whilst believed to be accurate are set out as a general outline only for guidance and do not constitute any part of an offer or contract. Intending purchasers should not rely on them as statements of representation of fact, but must satisfy themselves by inspection or otherwise as to their accuracy. No person in this firms employment has the authority to make or give any representation or warranty in respect of the property.