



60 All Saints Road

Blakeney, GL15 4DU

£220,000



Nestled in the charming village of Blakeney, this superb semi-detached house on All Saints Road offers a perfect blend of comfort and scenic beauty. With two generously sized double bedrooms, this property is ideal for small families, couples, or those seeking a peaceful retreat.

As you enter, you will be greeted by a reception room that provides a warm and inviting atmosphere, perfect for relaxation. The layout of the house is designed to maximise space, ensuring that every corner feels open and airy.

The kitchen area offers ample room for culinary creativity. The wonderful views surrounding the home enhance the tranquil village experience, allowing you to enjoy the beauty of nature right from your windows.

In summary, this semi-detached house on All Saints Road is a rare find in the picturesque village of Blakeney. With its two double bedrooms, inviting reception room, and stunning views, it presents an excellent opportunity for those looking to embrace a serene lifestyle in a welcoming community. Do not miss the chance to make this charming property your new home.



Entrance Hallway: (to the front)

5'1" x 4'1" (1.55m x 1.25m)

Door leading to living room and stairs to first floor landing.

Living Room:

10'9" x 14'3" (3.29m x 4.35m)

A bright and airy room with wonderful views over the hills, window to front aspect, radiator, power points.

Kitchen/Dining Room:

11'11" x 14'4" (3.65m x 4.38m)

A spacious kitchen/diner with window to rear aspect. A range of wall, base and drawer units, space & plumbing for washing machine, free standing cooker & hob, radiator, power points. Door through to rear hallway and cloakroom.

Cloakroom/Boiler Room:

6'2" x 3'0" (1.88m x 0.92)

WC, boiler, storage space, fuse board.

Stairs to First Floor Landing:

5'10" x 6'5" (1.80m x 1.97m)

Access to all rooms, airing cupboard, loft hatch.

Bedroom One:

10'0" x 14'5" (3.06m x 4.40m)

Window to front aspect, a very spacious bedroom with superb views over Blakeney and towards the hills, storage space, radiator, power points.

Bedroom Two:

13'0" x 9'3" (3.97m x 2.84m)

Window to rear aspect, another great size double bedroom, radiator, power points.

Bathroom:

5'6" x 5'0" (1.68m x 1.53m)

Window to rear aspect, bath with over head shower, tiled splashbacks, wash hand basin, wall mounted vertical radiator.

W.C:

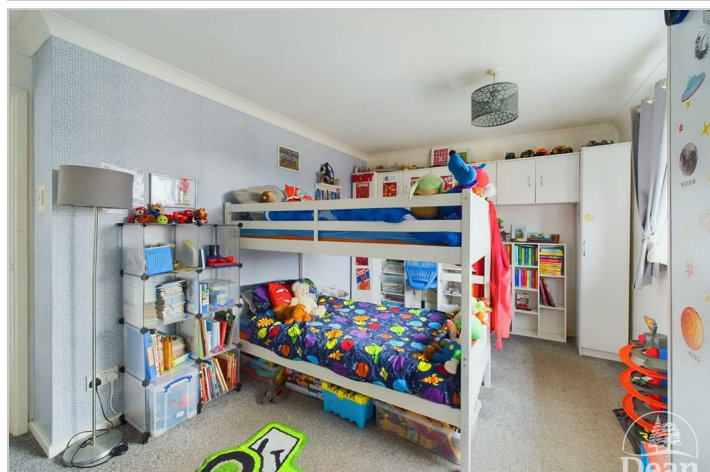
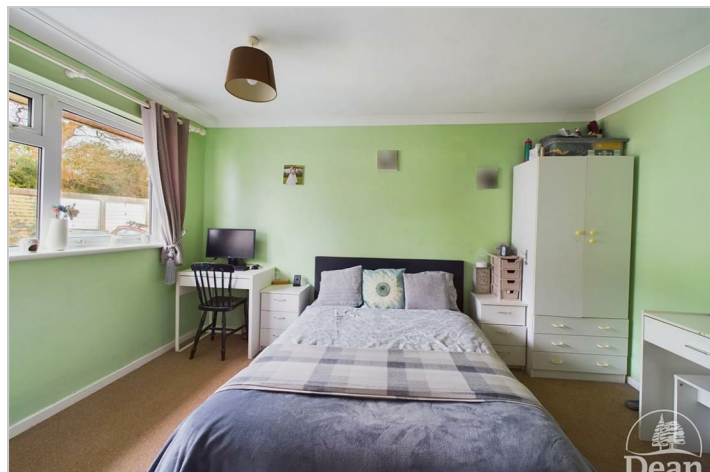
5'4" x 2'9" (1.64m x 0.84m)

Window to rear aspect, WC.

Outside:

To the front – the front garden is mainly laid to lawn with a footpath and steps leading up to the front door.

To the rear - off road parking, a seating area & summerhouse with power laid artificial grass a lovely viewpoint & a storage shed.



Consumer Notes: Dean Estate Agents Ltd have prepared the information within this website/brochure with care and co-operation from the seller. It is intended to be indicative rather than definitive, without a guarantee of accuracy. Before you act upon any information provided, we request that you satisfy yourself about the completeness, accuracy, reliability, suitability or availability with respect to the website or the information, products, services, or related graphics contained on the website for any purpose. Confirmation of the title, boundary plan, sellers situation must be confirmed with you before any expense is incurred.

If there are any changes to the fixtures, fittings and relevant aspects of the property since the commencement of marketing, we have asked the vendor to notify us immediately. Please also confirm to your satisfaction the services connected to the property and any planning consents. These details do not constitute any part of any Offer, Contract or Tenancy Agreement. Photographs used for advertising purposes may not necessarily be the most recent photographs. Any reliance you place on such information is therefore strictly at your own risk. All photographic images are under the ownership of Dean Estate Agents Ltd and therefore Dean Estate Agents Ltd retain the copyright. You must obtain permission from the owner of the images to reproduce them.

Tenanted Property – we are not always able to show the most recent condition of a property due to tenants' privacy and we may choose to show the photographs of the property when it was last vacant to at least allow clients some idea of the internal condition. Therefore, we would of course, urge you to view the property before making any decisions to purchase or rent the property and before committing to any costs. An offer to purchase any property will be considered after a physical viewing has taken place.

Road Map



Hybrid Map



Terrain Map



Floor Plan

Floor 0

Entrance Hall: 5'0" x 4'1" (1.55 x 1.25 m)

Living Room: 10'9" x 14'3" (3.29 x 4.35 m)

Kitchen/Dining Room: 11'11" x 14'4" (3.65 x 4.38 m)

WC: 13'7" x 2'11" (4.15 x 0.91 m)

Cloakroom: 6'2" x 3'0" (1.88 x 0.92 m)

Floor 1

Bedroom One: 10'0" x 14'5" (3.06 x 4.40 m)

Bedroom Two: 13'0" x 9'3" (3.97 x 2.84 m)

Landing: 5'11" x 6'5" (1.80 x 1.97 m)

Bathroom: 5'6" x 5'0" (1.68 x 1.53 m)

WC: 5'4" x 2'9" (1.64 x 0.84 m)

Approximate total area[®]

760.78 ft²

70.68 m²

(1) Excluding balconies and terraces

While every attempt has been made to ensure accuracy, all measurements are approximate, not to scale. This floor plan is for illustrative purposes only.

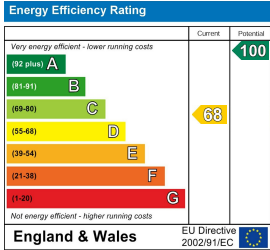
Calculations are based on RICS IPMS 3C standard.

GIRAFFE360

Viewing

Please contact our Lydney Office on 01594 368202 if you wish to arrange a viewing appointment for this property or require further information.

Energy Efficiency Graph



These particulars, whilst believed to be accurate are set out as a general outline only for guidance and do not constitute any part of an offer or contract. Intending purchasers should not rely on them as statements of representation of fact, but must satisfy themselves by inspection or otherwise as to their accuracy. No person in this firms employment has the authority to make or give any representation or warranty in respect of the property.