



## Dean Valley Panorama Lydney Road

Yorkley, Lydney, GL15 4RR

Offers In The Region Of £440,000



3



2



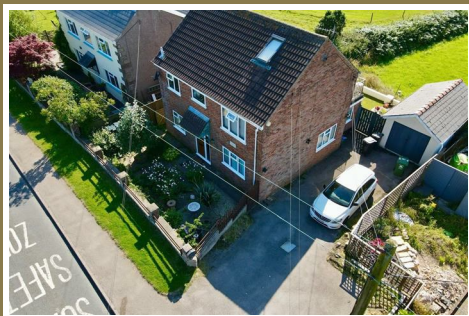
3



This is such a deceptive property in size with accommodation over three levels, including a ground floor sitting room, family bathroom, utility room, three bedrooms, one of which is the master bedroom with en-suite and a dressing room which could also be utilised as a children's bedroom/office. The first floor hosts a spacious lounge which is in addition to the lower ground floor sitting room, the lounge hosts super views as does the Balcony.

NOTE - The Worcester Oil Fired boiler was fitted in 2023 and the upper floor en-suite shower was re-tiled in 2023.

The property is located in a sought after village near to the local primary school, there are amazing views to the rear and a balcony soaking up those views leading off the lounge.



#### Entrance Lobby;

4'11" x 6'11" (1.52m x 2.12m)

Approached via a newly fitted composite door with obscured double glazed panel and laminate flooring. Smoke alarm which is mains powered and battery back up.

#### Rear ground floor Sitting Room;

12'5" x 8'11" (3.79m x 2.74m)

With views over farmland and the Forest of Dean via UPVC double glazed doors and windows, laminate flooring, radiator.

#### Bathroom;

8'10" x 8'4" (2.71m x 2.56m)

Family bathroom with a large bath incorporating seating, rainfall shower and further mixer tap shower, tiled walls, heated towel rail, tiled floor, vanity wash hand basin, storage cupboards, UPVC double glazed window, mirrored medicine cabinet.

#### Utility Room;

12'7" x 10'2" (3.86m x 3.11m)

Rear aspect with tiled flooring, Worcester oil boiler, plumbing for washing machine, Belfast sink, work surfaces, wall cupboards.

#### Bedroom Two;

10'11" x 10'4" (3.33m x 3.17m)

Front aspect UPVC double glazed window, built in wardrobes, radiator.

#### Master Bedroom;

7'6" x 9'5" (2.31m x 2.89m)

Rear aspect with radiator, UPVC double glazed

window, built in triple door wardrobes, fitted shelving, coved ceiling.

#### Dressing Room/Study;

Rear aspect UPVC double glazed window, radiator and door to En-Suite.

#### En-Suite;

7'5" x 4'0" (2.28m x 1.22m)

Side aspect with UPVC double glazed window, vanity wash hand basin unit, WC, shower tray with thermostatic shower, tiled flooring, extractor fan, shaver point and light.

From the ground floor one will find stairs leading to the first floor. Smoke alarms which is mains powered and battery back up.

#### Kitchen;

10'10" x 12'7" (3.31m x 3.85m)

Front aspect with base units, plumbing for dishwasher, electric hob, electric double oven, sink unit, UPVC double glazed window, laminate flooring, opening through to the lounge.

#### Lounge;

10'9" x 26'8" (3.28m x 8.13m)

Rear aspect with views, double glazed windows, sliding UPVC double glazed patio doors, doors onto the balcony, radiators.

#### Office;

10'10" x 10'5" (3.31m x 3.18m)

Front aspect UPVC double glazed window, radiator, stairs to upper floor, coved ceiling, ample power points.



From the office are stairs to the upper floor.

### Bedroom Three;

9'7" x 20'0" (2.94m x 6.10m)

Triple velux roof windows, radiator, recess ceiling lights, smoke alarm which has mains power and battery back up.

### En-Suite;

9'5" x 6'2" (2.89m x 1.89m)

With WC, twin wash hand basins, circular wall mirrors, radiator, velux roof window, extractor fan, walk in shower cubicle having tiled walls, electric shower and folding shower door.

### Outside;

To the front of the property one will find enclosed gardens, off road parking for several vehicles, outside lights to the front and rear, water tap to the side aspect. The rear gardens are enclosed and laid to lawn with the most fantastic views across the Forest of Dean

Detached Tandem Garage: with opening door, power, lighting and window.

Balcony: A decked balcony leading from the lounge and providing views across the surrounding area.



Consumer Notes: Dean Estate Agents Ltd have prepared the information within this website/brochure with care and co-operation from the seller. It is intended to be indicative rather than definitive, without a guarantee of accuracy. Before you act upon any information provided, we request that you satisfy yourself about the completeness, accuracy, reliability, suitability or availability with respect to the website or the information, products, services, or related graphics contained on the website for any purpose.

These details do not constitute any part of any Offer, Contract or Tenancy Agreement.

Photographs used for advertising purposes may not necessarily be the most recent photographs, although every effort is made to update photographs at the earliest opportunity. Any reliance you place on such information is therefore strictly at your own risk. All photographic images are under the ownership of Dean Estate Agents Ltd and therefore Dean Estate Agents retain the copyright. You must obtain permission from the owner of the images to reproduce them.

Tenanted Property – we are not always able to show the most recent condition of a property due to tenants' privacy and we may choose to show the photographs of the property when it was last vacant to at least allow clients some idea of the internal condition. Therefore, we would of course, urge you to view before making any decisions to purchase or rent the property and before any costs.

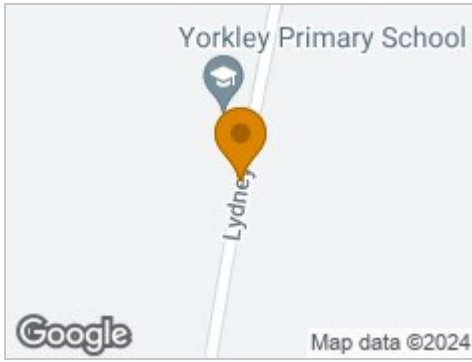
Energy Performance Certificates are supplied to us via a third party and we do not accept responsibility for the content within such reports.

PRC Certificates – Some ex-local authority properties have been repaired in recent years using the PRC Scheme wherein a certificate has been produced by a qualified property engineer. This certificate does not imply the suitability for a mortgage approval and you must satisfy yourself of the work carried out that may meet your lenders criteria.

As with leasehold property or new build development sites, you are likely to be responsible for a contribution to management charges and/or ground rent or a contribution to the development service charge. Please enquire at the time of viewing.

You may also incur fees for items such as leasehold packs and, in addition, you will also need to check the remaining length of any lease before you complete a mortgage application form. Please ask a member of our team for any help required before committing to purchase a property and incurring expense.

## Road Map



## Hybrid Map



## Terrain Map



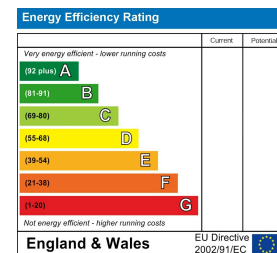
## Floor Plan



## Viewing

Please contact our Lydney Office on 01594 368202 if you wish to arrange a viewing appointment for this property or require further information.

## Energy Efficiency Graph



These particulars, whilst believed to be accurate are set out as a general outline only for guidance and do not constitute any part of an offer or contract. Intending purchasers should not rely on them as statements of representation of fact, but must satisfy themselves by inspection or otherwise as to their accuracy. No person in this firm's employment has the authority to make or give any representation or warranty in respect of the property.