



Grove Cottage The Tufts

Bream, Lydney, GL15 6HN

Offers In Excess Of £599,950



VIRTUAL TOUR AVAILABLE Dean Estate Agents are delighted to offer for sale this beautifully presented 5 bedroom detached cottage located in The Tufts, Bream. The original part of the property dates back to the 17th Century with oak beams and characterful exposed stone fireplace. The later extension has turned the property into a versatile family home with three reception rooms, kitchen benefitting from modern features including underfloor heating but has kept a certain rustic charm and snug overlooking the garden. The property boasts a stunning wraparound garden with multiple decking areas to be able to enjoy the sunshine throughout the day. This lovely home needs to be viewed to fully appreciate the delightful location, panoramic views and fantastic space on offer.



Approached via UPVC double glazed door:

Entrance Porch:

Single panelled radiator, UPVC double glazed door, tiled flooring.

Snug:

Double panelled radiator, UPVC double glazed French doors, UPVC double glazed window.

Kitchen:

A range of oak base wall and drawer units, granite worktops, integrated fridge, integrated freezer, built in oven, Neff induction hob, warming draw, built in microwave, sink, integrated dishwasher, under unit lighting, UPVC double glazed windows, underfloor heating, understairs storage, digital thermostat, underfloor heating.

Utility:

A range of base and wall units, worktop, plumbing for washing machine, Belfast sink, space for fridge freezer, mains consumer unit, UPVC double glazed window, underfloor heating.

Downstairs Shower Room:

Walk in shower with glass sliding door, tiled shower cubicle, W.C., pedestal sink, heated towel rail, underfloor heating, UPVC double glazed window, spotlights.

Dining Room:

Rustic elm beams, single panelled radiator, UPVC double glazed window, power and lighting.

Lounge:

16th Century open fire with stone walled surround, rustic elm beams, single panelled radiator, UPVC double glazed window, power and wall lighting.

Rear Entrance Porch:

UPVC double glazed front door, UPVC double glazed window, tiled flooring, power & lighting.

First Floor Landing:

Access to all bedrooms and family bathroom via the Pirana Pine staircase, storage cupboard, loft access, smoke alarm and lighting.

Bedroom One:

Bespoke fitted American White Oak wardrobes, single panelled radiator, UPVC double glazed windows, power and lighting.

Ensuite:

Walk in shower with glass sliding door, W.C., two glass sinks with mixer taps, heated towel rail, UPVC double glazed obscured window.

Bedroom Two:

Fitted wardrobes, sink with mixer tap, single panelled radiator, UPVC double glazed window.

Bedroom Three:

Open fireplace with stone surrounding, storage cupboard, single panelled radiator, UPVC double glazed windows with views, power and lighting.

Bedroom Four:

Single panelled radiator, UPVC double glazed window, power and lighting.

Bedroom Five:

Single panelled radiator, UPVC double glazed window, power and lighting.

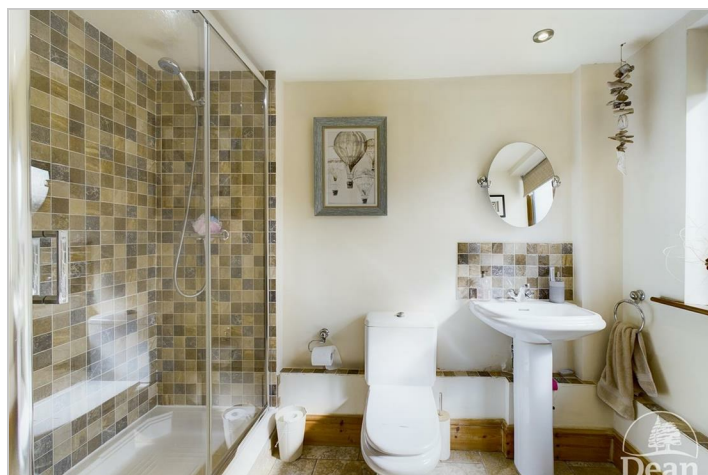
Bathroom:

Bath with shower over, pedestal sink, W.C., storage cupboard, single panelled radiator, double glazed velux window, lighting.

Outside:

The wraparound garden has a delightful pond and multiple decking areas, plenty of lawned area with various plants and shrubs. The garden also hosts a shed with windows, power and lighting.

There is ample of parking opposite the property where it benefits from grandfather rights to the land.



Consumer Notes: Dean Estate Agents Ltd have prepared the information within this website/brochure with care and co-operation from the seller. It is intended to be indicative rather than definitive, without a guarantee of accuracy. Before you act upon any information provided, we request that you satisfy yourself about the completeness, accuracy, reliability, suitability or availability with respect to the website or the information, products, services, or related graphics contained on the website for any purpose.

These details do not constitute any part of any Offer, Contract or Tenancy Agreement.

Photographs used for advertising purposes may not necessarily be the most recent photographs, although every effort is made to update photographs at the earliest opportunity. Any reliance you place on such information is therefore strictly at your own risk. All photographic images are under the ownership of Dean Estate Agents Ltd and therefore Dean Estate Agents retain the copyright. You must obtain permission from the owner of the images to reproduce them.

Tenanted Property – we are not always able to show the most recent condition of a property due to tenants' privacy and we may choose to show the photographs of the property when it was last vacant to at least allow clients some idea of the internal condition. Therefore, we would of course, urge you to view before making any decisions to purchase or rent the property and before any costs.

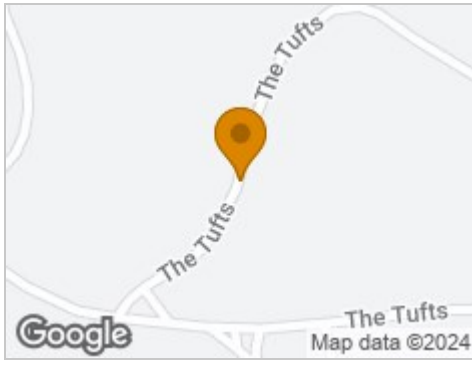
Energy Performance Certificates are supplied to us via a third party and we do not accept responsibility for the content within such reports.

PRC Certificates – Some ex-local authority properties have been repaired in recent years using the PRC Scheme wherein a certificate has been produced by a qualified property engineer. This certificate does not imply the suitability for a mortgage approval and you must satisfy yourself of the work carried out that may meet your lenders criteria.

As with leasehold property or new build development sites, you are likely to be responsible for a contribution to management charges and/or ground rent or a contribution to the development service charge. Please enquire at the time of viewing.

You may also incur fees for items such as leasehold packs and, in addition, you will also need to check the remaining length of any lease before you complete a mortgage application form. Please ask a member of our team for any help required before committing to purchase a property and incurring expense.

Road Map



Hybrid Map



Terrain Map



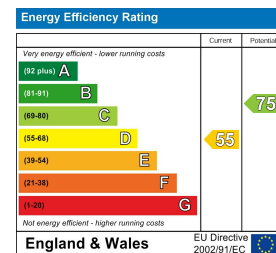
Floor Plan



Viewing

Please contact our Lydney Office on 01594 368202 if you wish to arrange a viewing appointment for this property or require further information.

Energy Efficiency Graph



These particulars, whilst believed to be accurate are set out as a general outline only for guidance and do not constitute any part of an offer or contract. Intending purchasers should not rely on them as statements of representation of fact, but must satisfy themselves by inspection or otherwise as to their accuracy. No person in this firm's employment has the authority to make or give any representation or warranty in respect of the property.