


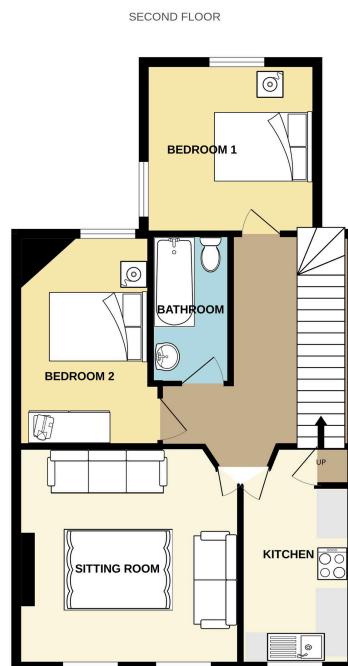


**Pebble Reach, 1c, High Street,**  
Guide Price £125,000

 2  1  1



- 2 Minutes from the Beach
- Central Location
- 2 Double Bedrooms
- Updated Bathroom
- Modern Kitchen
- New Carpets
- Large Landing
- Newly Decorated
- Great size Sitting Room
- You can see the sea!



2 BEDROOM, SECOND FLOOR APARTMENT

Whilst every attempt has been made to ensure the accuracy of the floorplan contained here, measurements of floors, windows, rooms and any other items are approximate and no responsibility is taken for any error, omission or mis-statement. This plan is for illustrative purposes only and should be used as such by any prospective purchaser. The services, systems and appliances shown have not been tested and no guarantee as to their operability or efficiency can be given.  
Made with Metagix 6/2025

Situated on the top floor of a well-maintained building on Budleigh High Street, this bright and spacious two-bedroom apartment is just a two-minute stroll from the beach. Freshly fitted with new carpets and decoration throughout, the property offers a modern and comfortable living space, ideal as a coastal retreat, first-time buy or investment. Flooded with natural light enjoying a prime central location, this charming apartment puts you within easy reach of local shops, cafes, and scenic seafront walks.