



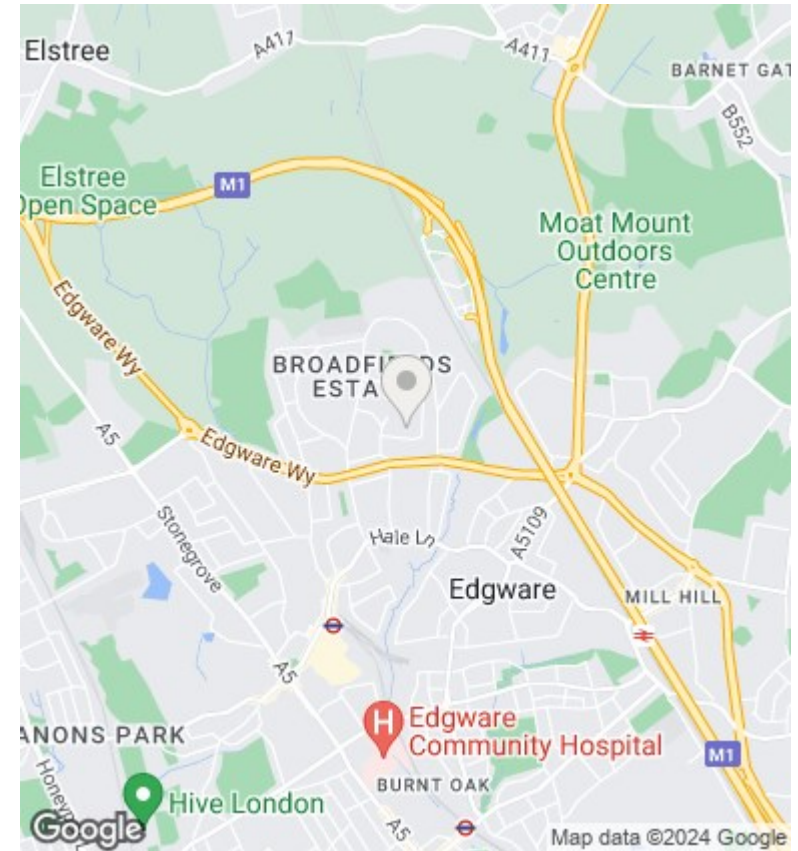
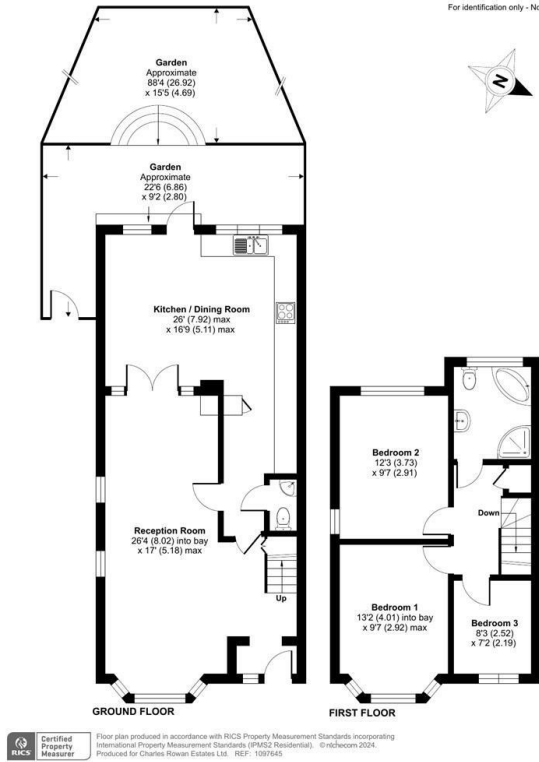
Marlborough Avenue, Edgware

Offers in excess of £600,000

- Freehold House
- Large Family Bathroom
- Utility Room
- Chain Free Sale
- Semi detached
- 1,111 Sq. ft.
- Guest WC
- 3 Bedrooms
- 88 Ft. Private Garden
- Close to Local Amenities

Marlborough Avenue, Edgware, HA8

Approximate Area = 1111 sq ft / 103.2 sq m
For identification only - Not to scale



Directions

The property is situated midway down Marlborough Avenue, HA8 8UH and is closely located to the Glengall Parade of shops. Edgware High Street and tube station (Northern Line) is approximately a mile away from the property.

Viewings

Viewings by arrangement only. Call +44 20 3300 3550 to make an appointment.

Council Tax Band

E

EPC Rating:

D

