



Church Road, London, NW10 9QD

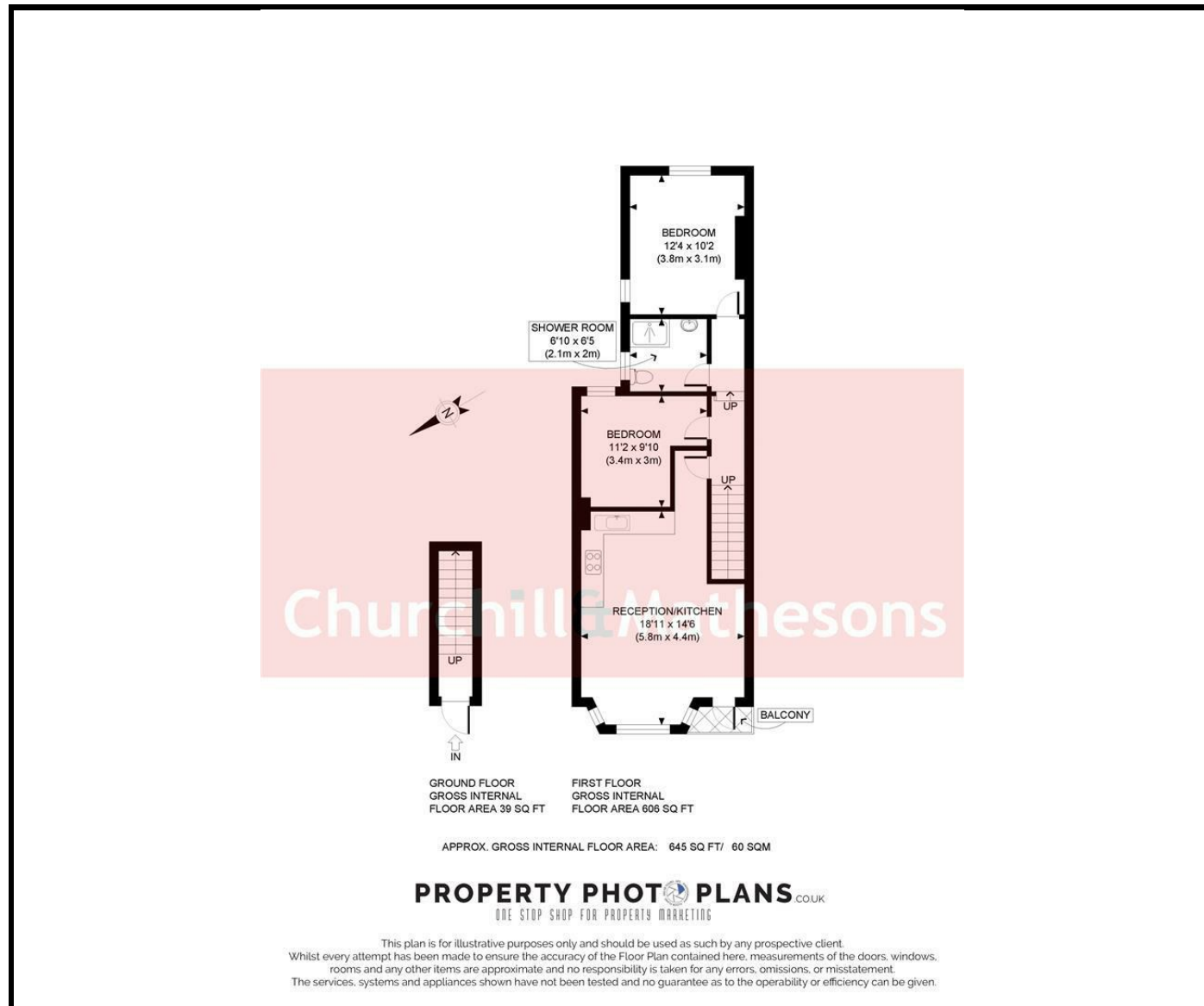
£461 Per Week



**KEY FEATURES:**

- Spacious and modern 2 c flat
- Large open plan reception
- Located close to all amenities of vibrant Harlesden
- Excellent transport links
- FURNISHED/UNFURNISHED NOW

- \* Spacious and modern 2 double bedroom flat
  - \* Large open plan reception room
  - \* Modern stylish kitchen with integrated appliances
  - \* Wooden flooring throughout
  - \* Storage space available throughout
  - \* Located close to all amenities of the vibrant Harlesden
- Excellent transport links  
FURNISHED/UNFURNISHED~AVAILABLE NOW



**Energy Efficiency Rating**

	Current	Potential
Very energy efficient - lower running costs		
(92 plus) <b>A</b>		
(81-91) <b>B</b>		
(69-80) <b>C</b>		
(55-68) <b>D</b>	55	68
(39-54) <b>E</b>		
(21-38) <b>F</b>		
(1-20) <b>G</b>		
Not energy efficient - higher running costs		
<b>England &amp; Wales</b>	EU Directive 2002/91/EC	

**Environmental Impact (CO<sub>2</sub>) Rating**

	Current	Potential
Very environmentally friendly - lower CO <sub>2</sub> emissions		
(92 plus) <b>A</b>		
(81-91) <b>B</b>		
(69-80) <b>C</b>		
(55-68) <b>D</b>		
(39-54) <b>E</b>		
(21-38) <b>F</b>		
(1-20) <b>G</b>		
Not environmentally friendly - higher CO <sub>2</sub> emissions		
<b>England &amp; Wales</b>	EU Directive 2002/91/EC	

Whilst every effort is made to give a fair description, the accuracy of these particulars is not guaranteed, neither do they constitute an offer or contract.

**CHURCHILL & MATHESONS ESTATE AGENTS** have not tested any apparatus, equipment, fitting or services and so cannot verify that they are in working order. The buyer is advised to obtain verification from their solicitor or surveyor. Measurements are correct to within +/- 6 A sonic tape is used. None of the statements contained in these particulars or any of our properties are to be relied upon as a representation of fact.