



166 Manor Park Road
Harlesden
London
NW10 4JT
T: 020 8965 2250
E: sales@churchillmathesons.com
www.churchillmathesons.com

Churchill&Mathesons

Redfern Road, London, NW10 9LB

Asking Price £695,000 Freehold



KEY FEATURES:

- FREEHOLD
- 4 BEDROOMS
- OPTION FOR LOFT CONVERSION
- 1 LIVING ROOM
- 1 DINING ROOM
- 2 BATHROOMS
- PAVED GARDEN
- SHED

TERRACE HOME WITH SOUTH FACING GARDEN

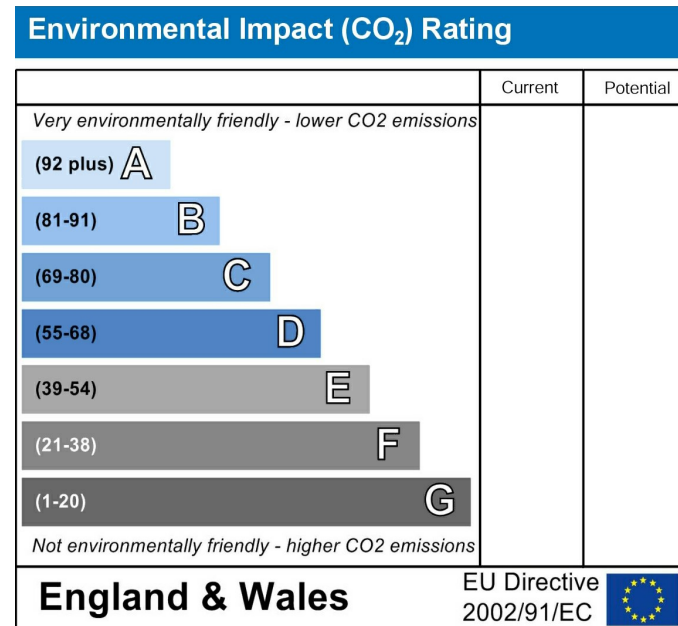
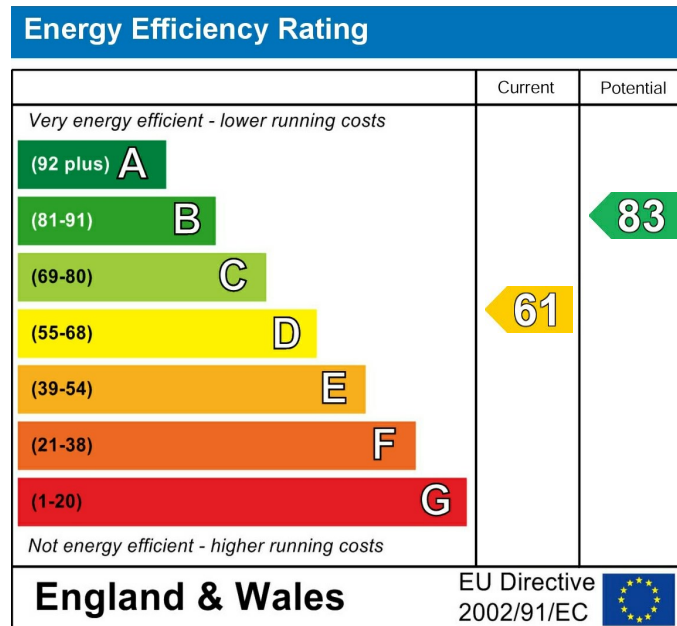
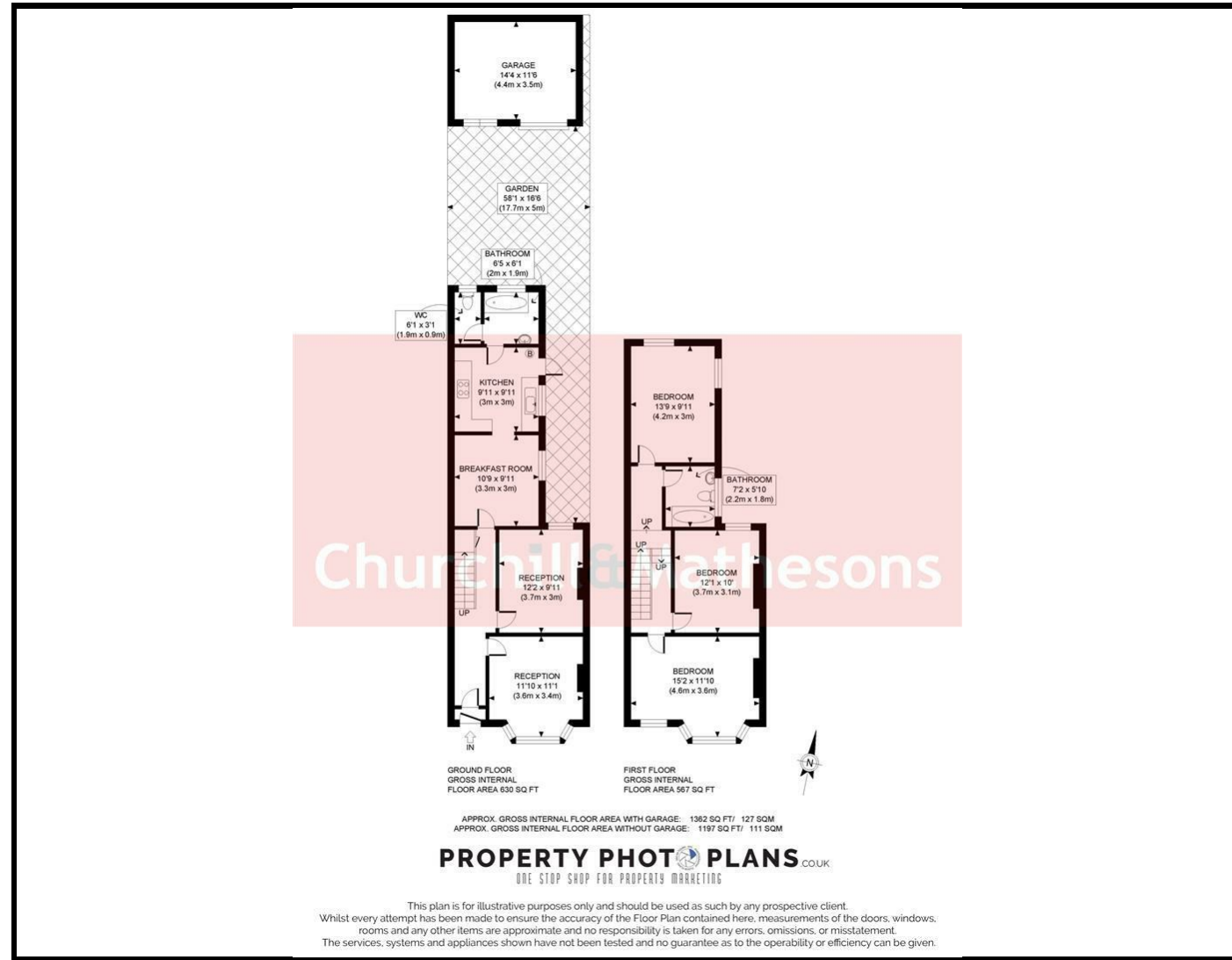
Welcome to Redfern Road, London - a charming Edwardian terrace house that exudes character. This delightful 1,362 sqft property boasts high ceilings, creating a sense of space and grandeur throughout.

Upon entering, you are greeted by a reception room, perfect for entertaining guests or simply relaxing with your loved ones and separate dining room.

With three double bedrooms on the first floor, there is ample space for a growing family or for those who enjoy having a guest room or a home office. There are two well-appointed bathrooms one on the ground floor and one on the 1st floor. A south facing paved garden and a 167sqft shed completes this home.

The Edwardian terrace architecture adds a touch of historic charm to this lovely home.

Contact us today to arrange a viewing and step into your future with this remarkable property.



Whilst every effort is made to give a fair description, the accuracy of these particulars is not guaranteed, neither do they constitute an offer or contract.

CHURCHILL & MATHESONS ESTATE AGENTS have not tested any apparatus, equipment, fitting or services and so cannot verify that they are in working order. The buyer is advised to obtain verification from their solicitor or surveyor. Measurements are correct to within +/-6 A sonic tape is used. None of the statements contained in these particulars or any of our properties are to be relied upon as a representation of fact.