



166 Manor Park Road  
Harlesden  
London  
NW10 4JT  
T: 020 8965 2250  
E: sales@churchillmathesons.com  
www.churchillmathesons.com

**Churchill & Mathesons**

High Street, London, NW10 4TS

Asking Price £279,000 Leasehold



**KEY FEATURES:**

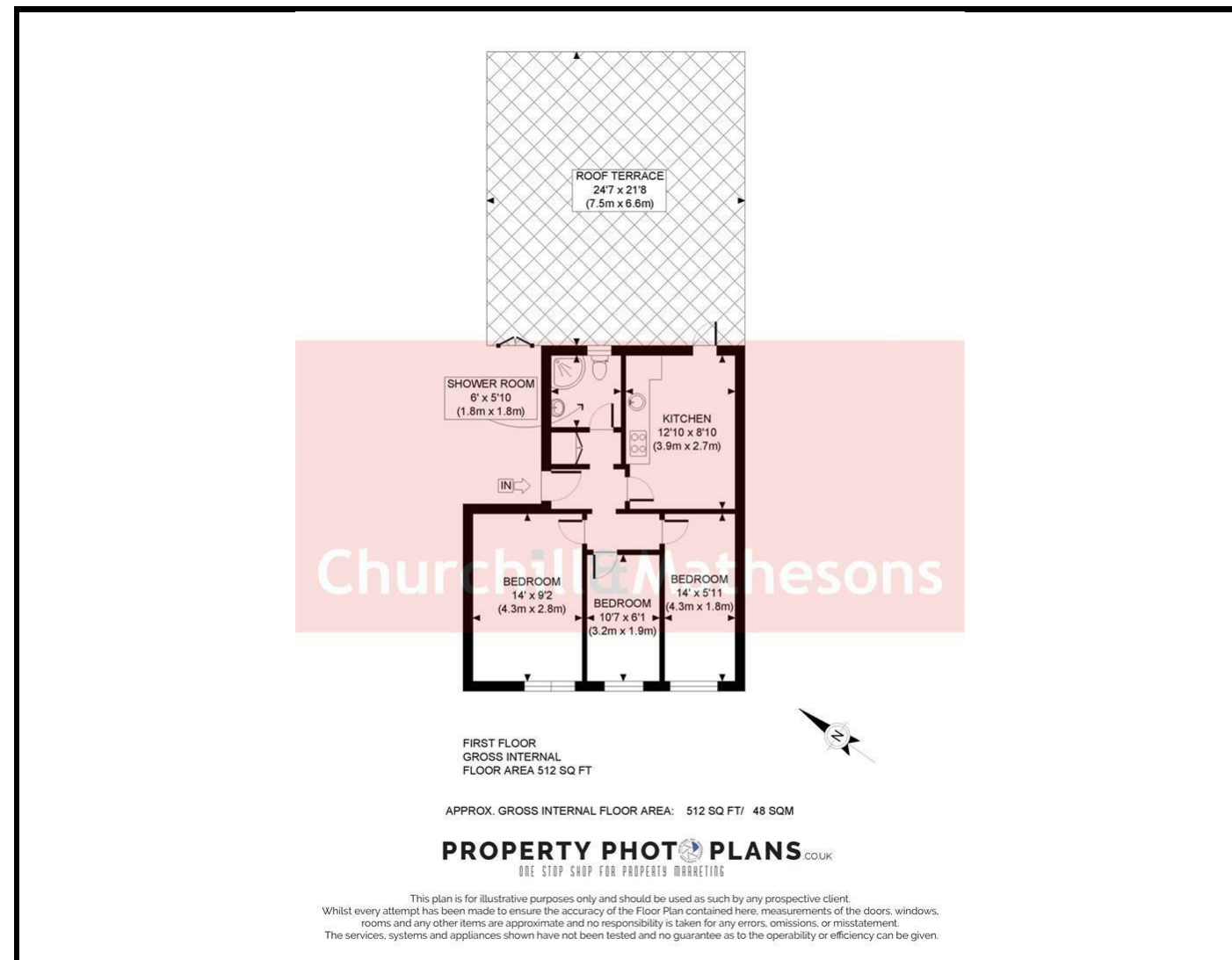
- NO CHAIN
- LONG LEASE
- CENTRAL LOCATION
- GREAT 1ST BUYER'S FLAT
- A MUST TO SEE

1 BED FLAT WITH OUTSIDE SPACE CHAIN FREE

Churchill & Mathesons is proud to present this 512sqft 1st floor flat on High Street, Harlesden. This flat comprises a large bedroom, a good size living room, a fully tiled bathroom and separate well appointed kitchen that leads out onto a large roof terrace. Wood laminate floors, down lights and is centrally located.

OPTION TO EXTEND OUT THE BACK.





Energy Efficiency Rating		Current	Potential
Very energy efficient - lower running costs			
(92 plus) <b>A</b>			
(81-91) <b>B</b>			
(69-80) <b>C</b>			
(55-68) <b>D</b>			
(39-54) <b>E</b>			
(21-38) <b>F</b>			
(1-20) <b>G</b>			
Not energy efficient - higher running costs			
		<b>68</b>	<b>73</b>
<b>England &amp; Wales</b>	EU Directive 2002/91/EC		

Environmental Impact (CO <sub>2</sub> ) Rating		Current	Potential
Very environmentally friendly - lower CO <sub>2</sub> emissions			
(92 plus) <b>A</b>			
(81-91) <b>B</b>			
(69-80) <b>C</b>			
(55-68) <b>D</b>			
(39-54) <b>E</b>			
(21-38) <b>F</b>			
(1-20) <b>G</b>			
Not environmentally friendly - higher CO <sub>2</sub> emissions			
<b>England &amp; Wales</b>	EU Directive 2002/91/EC		

Whilst every effort is made to give a fair description, the accuracy of these particulars is not guaranteed, neither do they constitute an offer or contract.

**CHURCHILL & MATHESONS ESTATE AGENTS** have not tested any apparatus, equipment, fitting or services and so cannot verify that they are in working order. The buyer is advised to obtain verification from their solicitor or surveyor. Measurements are correct to within +/- 6 A sonic tape is used. None of the statements contained in these particulars or any of our properties are to be relied upon as a representation of fact.