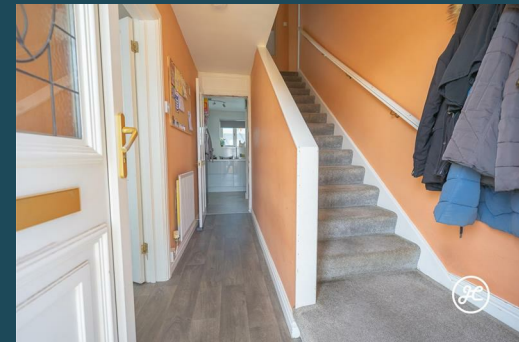
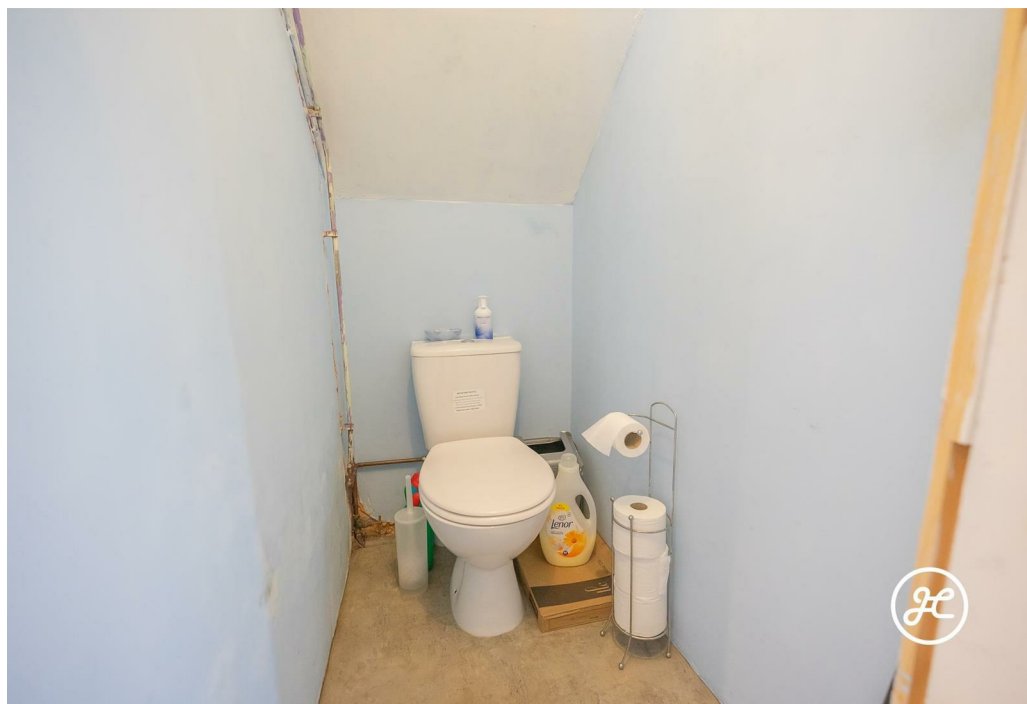


Portman Road
North Petherton
Bridgwater
TA6 6SS




JOSEPH CASSON
the estate agency your home deserves





£250,000

- Extended Semi-Detached Property
 - Three Double Bedrooms
 - First Floor Bathroom
- Two Reception Rooms & Conservatory
 - Modern Fitted Kitchen
 - Cloakroom
- Front & Rear Gardens
- Parking On Own Driveway
- Double Glazed & Gas Central Heating

Situated within the sought-after town of North Petherton, this three bedroom semi-property boasts an impressive double-storey extension, a delightful conservatory, a spacious rear garden, and convenient parking on your very own driveway.

ACCOMMODATION

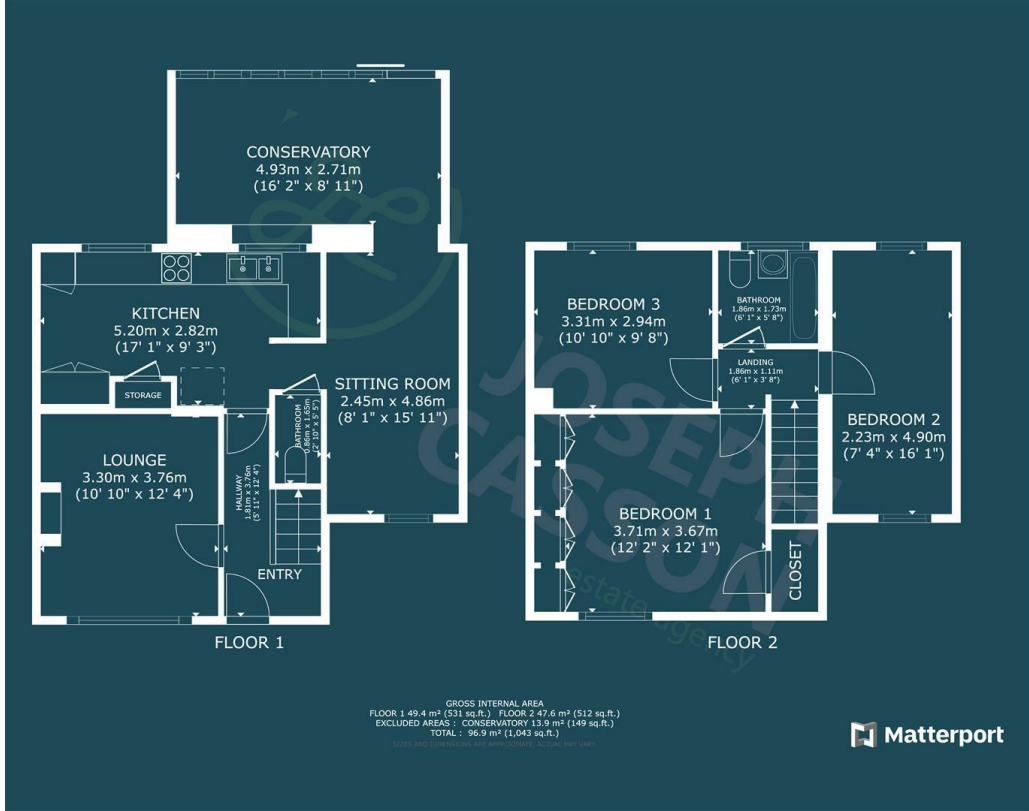
This double-glazed, gas centrally heated property briefly comprises: an entrance hallway, lounge (currently used as a bedroom), modern fitted kitchen, sitting room, cloakroom, and a conservatory to the ground floor. Arranged on the first floor and accessed from the landing are three double bedrooms and a bathroom.

Externally there is a lawned front garden and parking on own driveway. To the rear is a generously sized lawned garden.

LOCATION

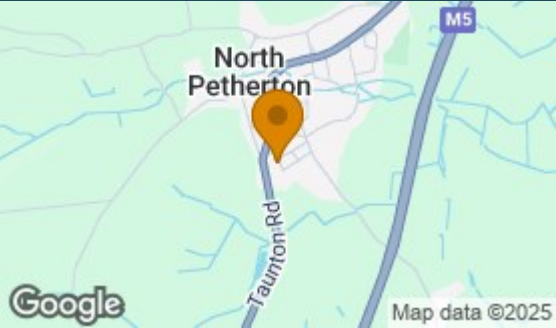
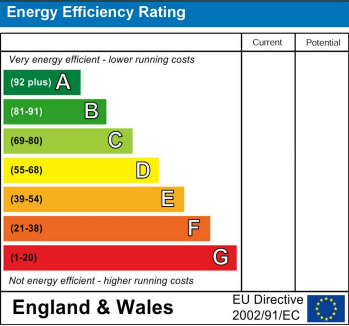
North Petherton has a good range of amenities, including primary school, church, public houses, shops, restaurant, library, doctors & dentist surgeries. It is also within easy reach of Junction 24 of the M5, and the larger towns of Bridgwater and Taunton.





Council Tax Band

B



Agents Note: Whilst every care has been taken to prepare these particulars, they are for guidance purposes only. All measurements are approximate and are for general guidance purposes only and whilst every care has been taken to ensure their accuracy, they should not be relied upon and potential buyers/tenants are advised to recheck the measurements



Joseph Casson Estate Agency -
Taunton
2 The Crescent
Taunton
Somerset
TA1 4EA



Contact
01823 740051
office@josephcasson.co.uk
www.josephcasson.co.uk



JOSEPH CASSON
the estate agency your home deserves