

Dodington
Nether Stowey
Bridgwater
TA5 1LE



JOSEPH CASSON

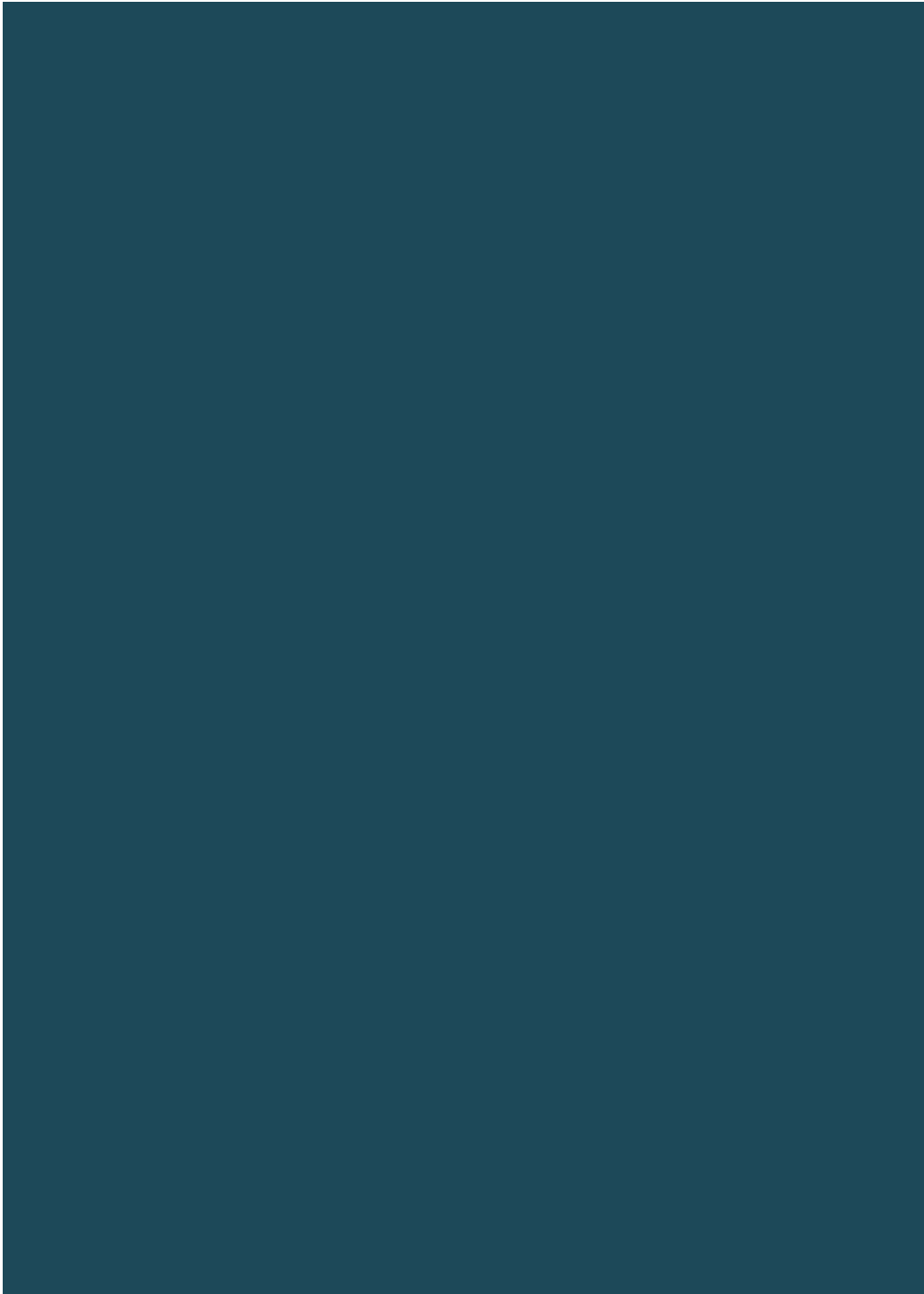
the estate agency your home deserves

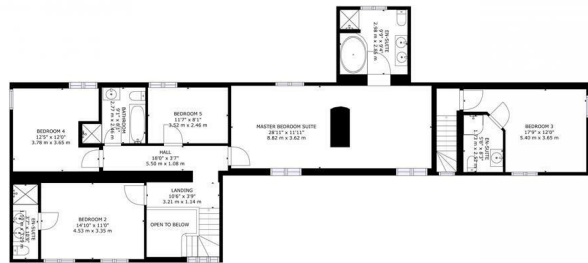




£875,000

- Historic Detached Family Property
- Accommodation Measures Approx. 280 sq. m (3000 sq feet)
 - Constructed Circa 1750
 - Six Bedrooms
 - Including a Large Master Bedroom Suite
 - Five Bathrooms (Including En-Suites)
- Expansive Open-Plan Kitchen/Dining/Living Room
 - Two Separate Reception Rooms
 - Additional Kitchen/Breakfast Room
 - Set In Grounds Of Three Acres





FLOOR 2



FLOOR 1

GROSS INTERNAL AREA
 FLOOR 1: 1615 sq. ft./150 m², FLOOR 2: 1432 sq. ft./133 m²
 TOTAL: 3047 sq. ft./283 m²
 SIZES AND DIMENSIONS ARE APPROXIMATE, ACTUAL MAY VARY.



Council Tax Band

E

Energy Efficiency Rating	Current	Potential
Very energy efficient - lower running costs		
(92 plus) A		
(81-91) B		
(69-80) C		
(55-68) D		
(39-54) E		
(21-38) F		
(1-20) G		
Not energy efficient - higher running costs		
England & Wales	EU Directive 2002/91/EC	



Agents Note: Whilst every care has been taken to prepare these particulars, they are for guidance purposes only. All measurements are approximate and are for general guidance purposes only and whilst every care has been taken to ensure their accuracy, they should not be relied upon and potential buyers/tenants are advised to recheck the measurements



Contact
01823 740051
office@josephcasson.co.uk

Joseph Casson Estate Agency -
Taunton
2 The Crescent
Taunton
Somerset
TA1 4EA



JOSEPH CASSON
the estate agency your home deserves