



86 Somerset Road, Farnborough

£475,000 Freehold

THREE SEPERATE BEDROOMS • NUMEROUS CHARACTER FEATURES • GAS CENTRAL HEATING/DOUBLE GLAZING • GREAT SIZE LOUNGE WITH LOG BURNER • CLOSE TO LOCAL AMENITIES • GOOD ACCESS TO ASH VALE & NORTHCAMP STATIONS
• GREAT SIZE FAMILY/DINING ROOM • NO CHAIN COMPLICATIONS

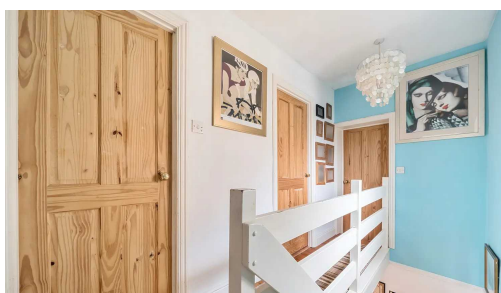


Charming 3-bed detached house in quiet area. Spacious lounge with log burner, family/dining room, gas central heating, double glazing. Conveniently located near amenities and train stations. No chain. Comfort, character, and convenience in one. Viewing recommended. Council Tax band: C

Tenure: Freehold

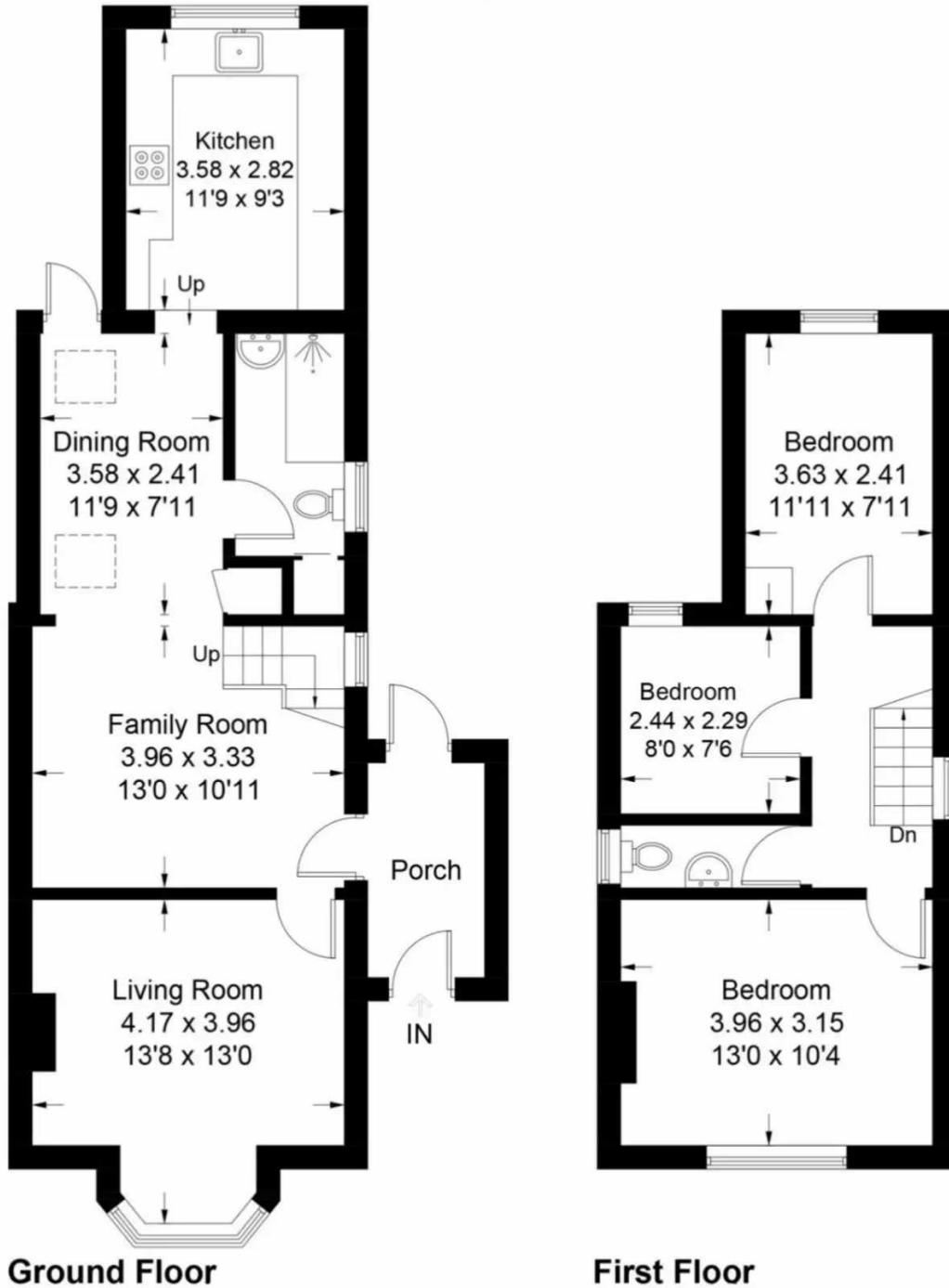


- THREE SEPERATE BEDROOMS
- NUMEROUS CHARACTER FEATURES
- GAS CENTRAL HEATING/DOUBLE GLAZING
- GREAT SIZE LOUNGE WITH LOG BURNER
- CLOSE TO LOCAL AMENITIES
- GOOD ACCESS TO ASH VALE & NORTHCAMP STATIONS
- GREAT SIZE FAMILY/DINING ROOM
- NO CHAIN COMPLICATIONS





Approximate Gross Internal Area
Ground Floor = 59.1 sq m / 636 sq ft
First Floor = 35.6 sq m / 383 sq ft
Total = 94.7 sq m / 1019 sq ft



Somerset Road

Illustration for identification purposes only, measurements are approximate, not to scale. FloorplansUsketch.com © 2023 (ID1023045)

You can include any text here. The text can be modified upon generating your brochure.