



19a Gatton Park Road

Redhill

Guide Price £875,000



19a Gatton Park Road

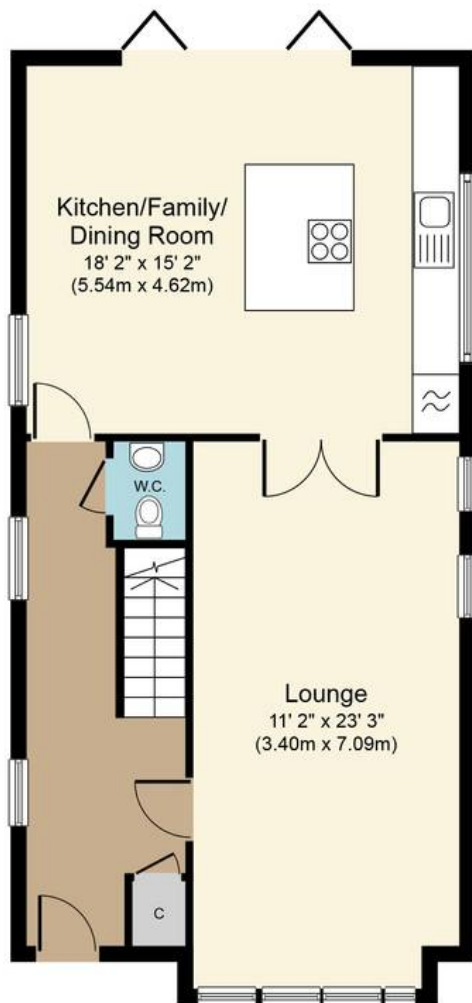
This beautiful four-bedroom detached house offers a perfect blend of contemporary living and traditional charm. Boasting a 10-year new build warranty, this stunning property features a spacious kitchen family room, ideal for entertaining guests or relaxing with family. With over 1,800 sq ft of living space, this newly constructed home is one of just two homes available for sale. The property is equipped with underfloor heating, providing both comfort and energy efficiency via an air heat source pump.

Situated in a sought-after location, this home enjoys close proximity to great schools and excellent transport links. The large driveway, complete with an electric car charging point, provides ample space for parking. Step outside to discover the expansive rear garden, stretching approximately 100 ft and featuring a raised patio area, perfect for al fresco dining and outdoor gatherings. The bespoke dove grey kitchen, luxurious quartz countertops, and high-end integrated appliances enhance the open-plan kitchen and dining area, creating a space that is both stylish and functional.

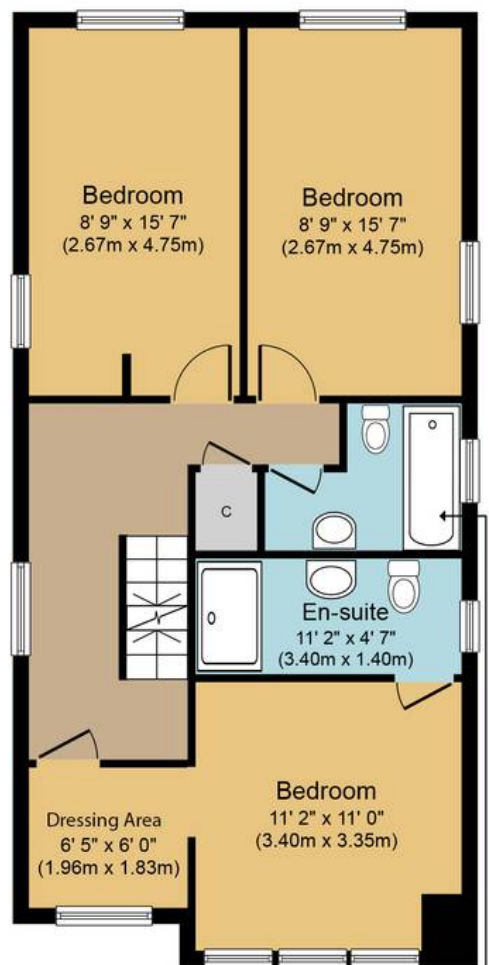
Outside, the property continues to impress with its ample off-road parking and EV charging point, catering to the needs of modern living. Whether you're enjoying the peaceful surroundings of the large rear garden or making use of the convenient amenities and features of this exceptional property, this residence offers a unique opportunity for luxurious living in a desirable location. Council Tax band: F Tenure: Freehold



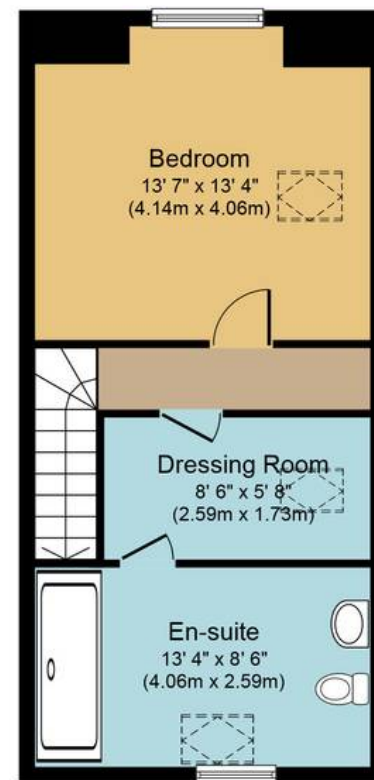




Ground Floor
Approximate Floor Area
688 sq. ft.
(63.9 sq. m.)



First Floor
Approximate Floor Area
691 sq. ft.
(64.2 sq. m.)



Second Floor
Approximate Floor Area
438 sq. ft.
(40.7 sq. m.)



Gatton Park Road, RH1
Approx. Gross Internal Floor Area 1,817 sq. ft. (168.8 sq. m.)



Whilst every attempt has been made to ensure the accuracy of the floor plan contained here, measurements of doors, windows, rooms and any other items are approximate and no responsibility is taken for any error, omission, or mis-statement. The measurements should not be relied upon for valuation, transaction and/or funding purposes. This plan is for illustrative purposes only and should be used as such by any prospective purchaser or tenant. The services, systems and appliances shown have not been tested and no guarantee as to their operability or efficiency can be given.