



43 Abinger Drive

Redhill

Guide Price £650,000



43 Abinger Drive

Nestled within a tranquil modern development surrounded by serene woodlands, this beautiful modern three-bedroom semi-detached house offers a perfect blend of contemporary living and natural splendour. The property boasts of three generously sized bedrooms, with en-suite facilities enhancing the comfort and convenience of the master bedroom.

Upon entering this charming abode, one is greeted with a spacious lounge, ideal for relaxation and entertainment, providing ample natural light and a welcoming ambience. The property also features a garage and off-road parking, ensuring practicality for its residents.

Situated in an excellent location within walking distance to the stunning Earlswood Lakes, residents can enjoy the picturesque views and tranquil surroundings, perfect for leisurely strolls by the water. The property's enviable proximity to Reigate School and St Johns School underlines its desirability for families seeking quality education for their children.

Those looking for entertainment and culinary experiences will appreciate the nearby local pubs and the 'The Light' leisure complex, offering a multi-screen cinema, bowling alley, and a variety of restaurants. Residents can also revel in the beauty of the green spaces in the vicinity, including Earlswood Lakes and Redhill Common, ideal for outdoor activities and a connection with nature.

Commute is made easy with nearby access to mainline trains to London, Gatwick, Brighton and Guildford, catering to diverse travel needs. The property's location ensures convenience and accessibility to various destinations, catering to the dynamic lifestyle of its residents.

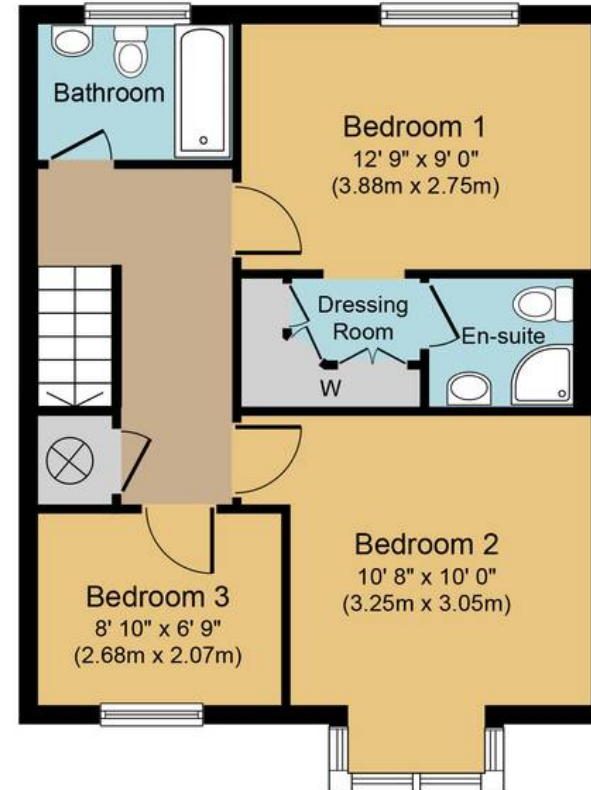
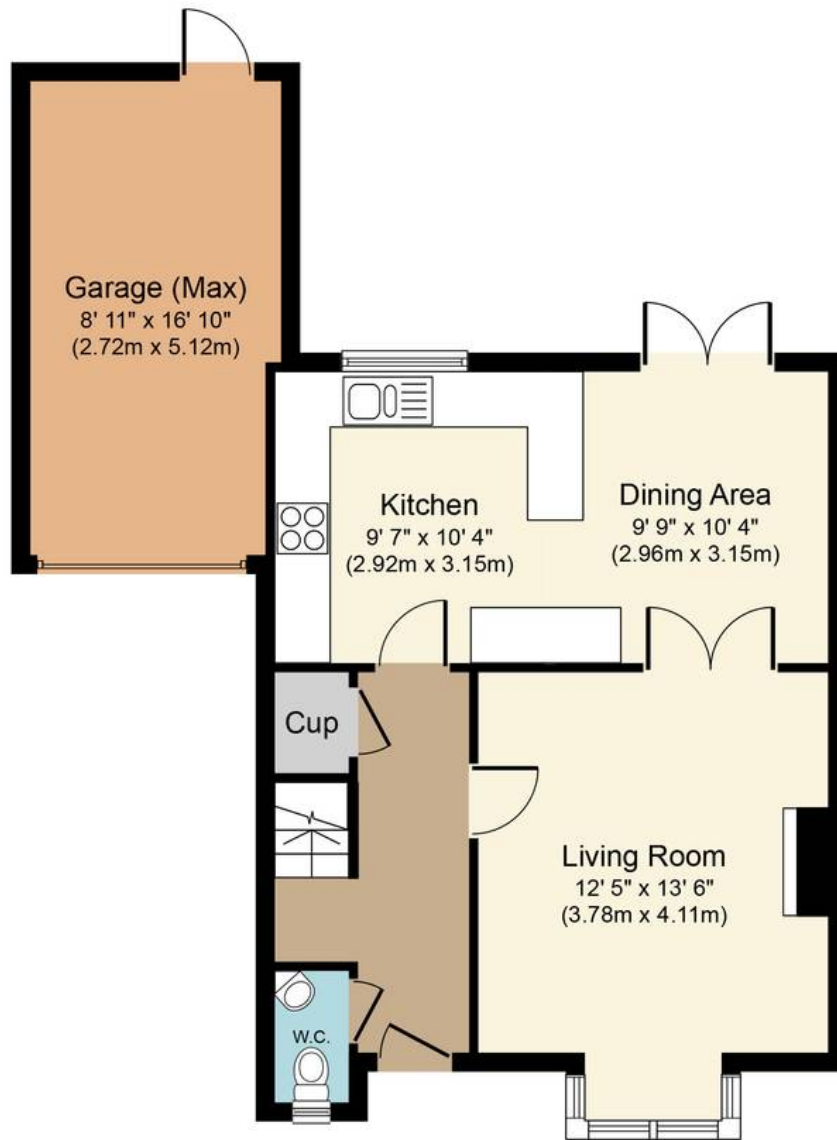
Council Tax band: F

Tenure: Freehold

- Beautiful Modern Three Bedroom Semi-detached
- En-suites To Master Bedroom
- Walking Distance To Earlswood Lakes







Ground Floor
Approximate Floor Area
 623 sq. ft.
 (57.9 sq. m.)

First Floor
Approximate Floor Area
 468 sq. ft.
 (43.5 sq. m.)

Abinger Drive, RH1

Approx. Gross Internal Floor Area 1,092 sq. ft. (101.4 sq. m.)



Whilst every attempt has been made to ensure the accuracy of the floor plan contained here, measurements of doors, windows, rooms and any other items are approximate and no responsibility is taken for any error, omission, or mis-statement. The measurements should not be relied upon for valuation, transaction and/or funding purposes. This plan is for illustrative purposes only and should be used as such by any prospective purchaser or tenant. The services, systems and appliances shown have not been tested and no guarantee as to their operability or efficiency can be given.