



24 Salisbury Road

, Worthing, BN11 1RD

£950 Per month

Council Tax Band A



OPEN HOUSE FRIDAY 10TH OCTOBER 2025 - By Appointment Only. A ONE BEDROOM FIRST FLOOR FLAT with RESIDENTS PARKING situated within WORTHING TOWN CENTRE.

The accommodation comprises; communal entrance hall, entrance hall, lounge, kitchen, bathroom and bedroom.

The property is offered unfurnished and available mid October 2025.

ENTRANCE

Communal Entrance Hall

Entrance Hall

Lounge

12'4 x 9'6 (3.76m x 2.90m)

Kitchen

8'11 x 6'4 (2.72m x 1.93m)

Bedroom

12'0 x 12'4 (3.66m x 3.76m)

Bathroom

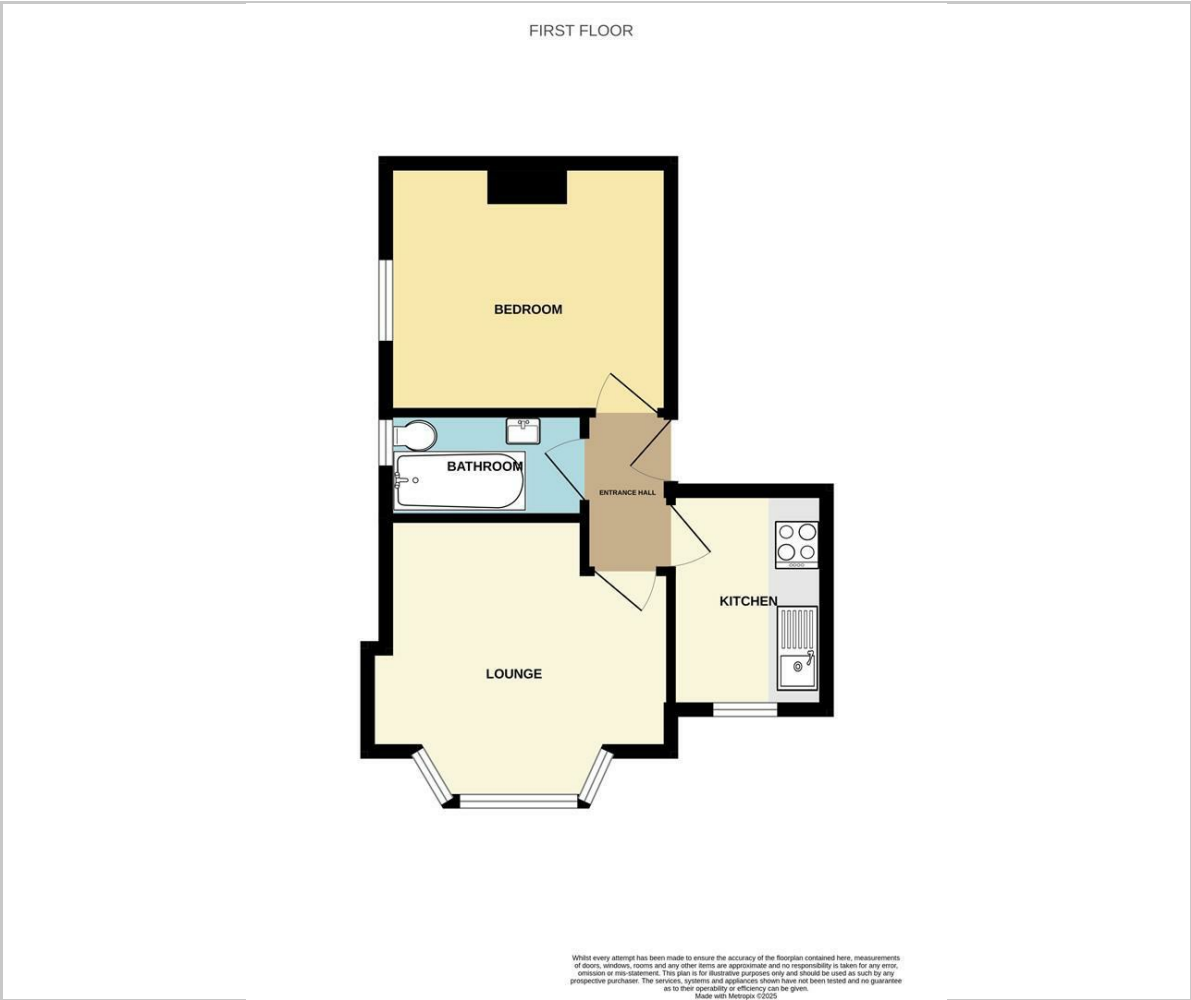
OUTSIDE

Residents Parking





Floor Plan



Viewing

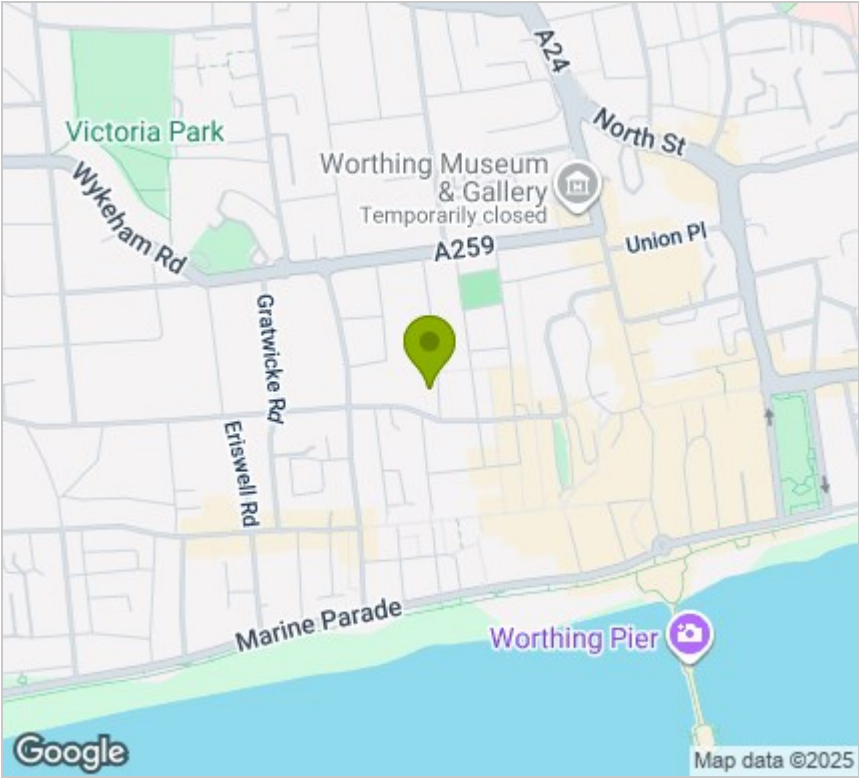
Please contact our Ferring Lettings Office on 01903 958770 if you wish to arrange a viewing appointment for this property or require further information.

These particulars, whilst believed to be accurate are set out as a general outline only for guidance and do not constitute any part of an offer or contract. Intending purchasers should not rely on them as statements of representation of fact, but must satisfy themselves by inspection or otherwise as to their accuracy. No person in this firms employment has the authority to make or give any representation or warranty in respect of the property.

All successful buyers must complete an online identity verification check provided by I am Property. This is a legal requirement in accordance with HMRC's Money Laundering, Terrorist Financing and Transfer of Funds (Information on the Payer) Regulations 2017. The cost of this check is £20 (inc. VAT) per person.



Area Map



Energy Efficiency Graph

