



125A Dominion Road

, Worthing, BN14 8LD

£1,295 Per month

Council Tax Band A

OPEN HOUSE TUESDAY 29TH APRIL - By Appointment Only. A two bedroom end terrace house with generous rear garden. The accommodation comprises; entrance hall, ground floor cloakroom, kitchen, lounge, two bedrooms and a bathroom.

Offered unfurnished, the property is available from mid May 2025.

ENTRANCE

Entrance Hall

Ground Floor WC

Kitchen

8'11 x 7'6 (2.72m x 2.29m)

Lounge

16'3 max 10'9 max (4.95m max 3.28m max)

FIRST FLOOR LANDING

Bedroom One

14'1 x 9'4 max (4.29m x 2.84m max)

Bedroom Two

10'7 x 7'9 (3.23m x 2.36m)

Bathroom

OUTSIDE

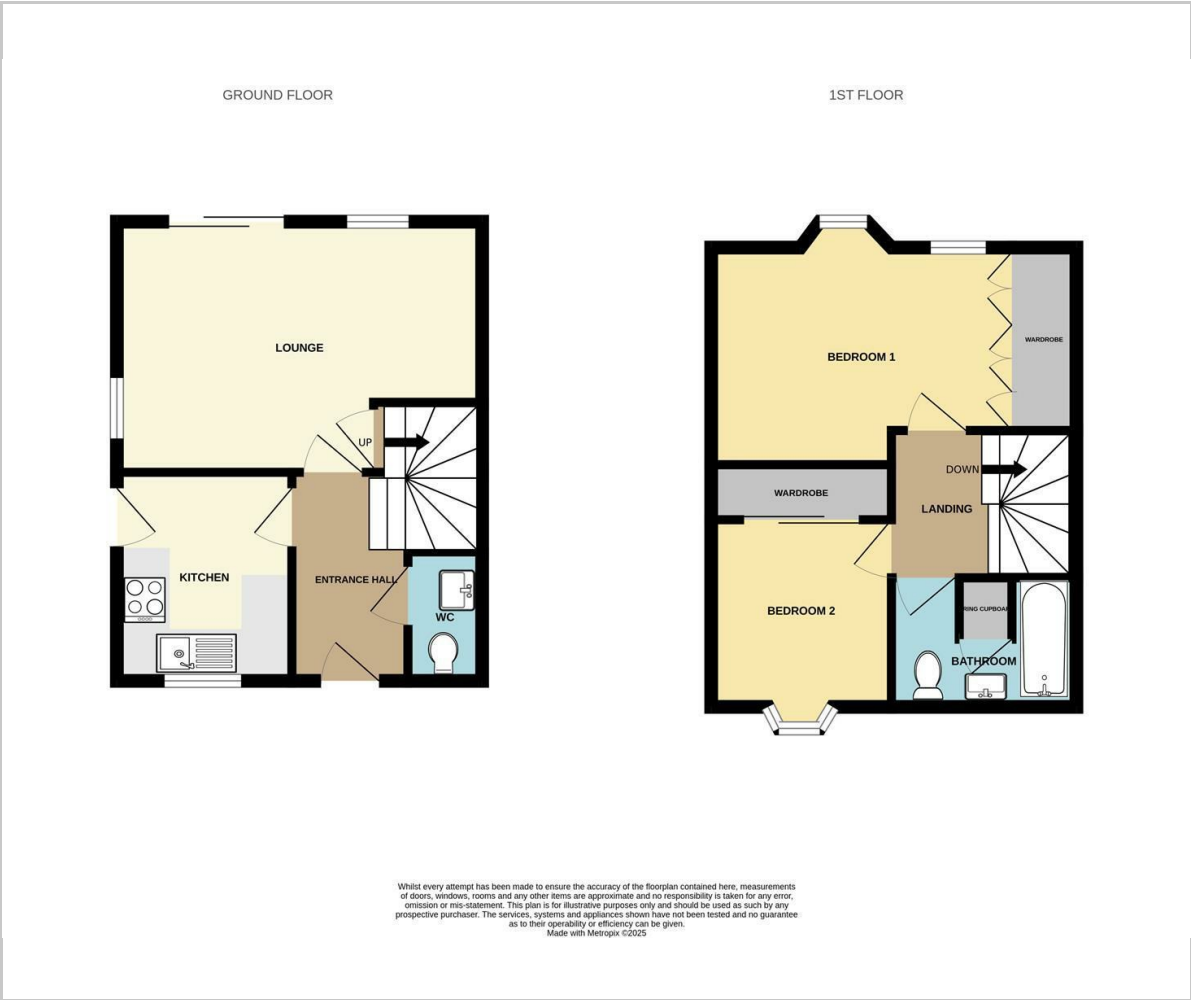
Rear Garden

Front Garden





Floor Plan

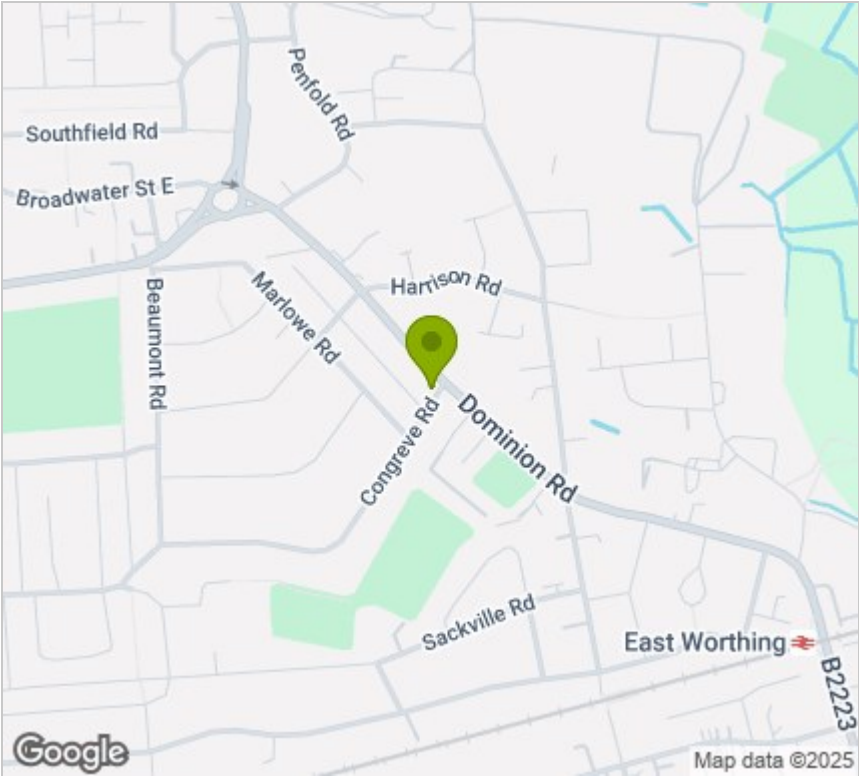


Viewing

Please contact our Ferring Lettings Office on 01903 958770 if you wish to arrange a viewing appointment for this property or require further information.

These particulars, whilst believed to be accurate are set out as a general outline only for guidance and do not constitute any part of an offer or contract. Intending purchasers should not rely on them as statements of representation of fact, but must satisfy themselves by inspection or otherwise as to their accuracy. No person in this firms employment has the authority to make or give any representation or warranty in respect of the property.

Area Map



Energy Efficiency Graph

