



GATEWAY CAPITAL  
PROPERTY

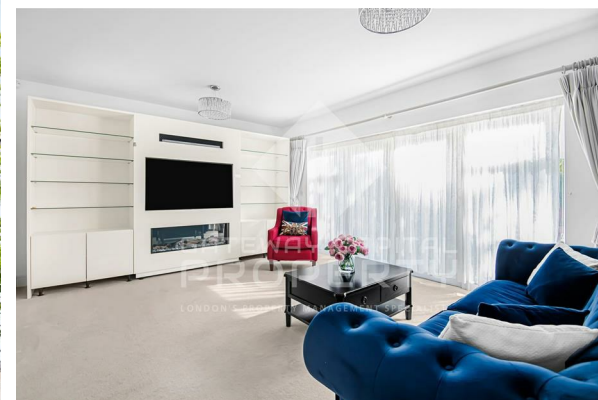
LONDON'S PROPERTY MANAGEMENT SPECIALIST



TO LET

£1,600,000

APPROXIMATELY 1,800 SQ FT





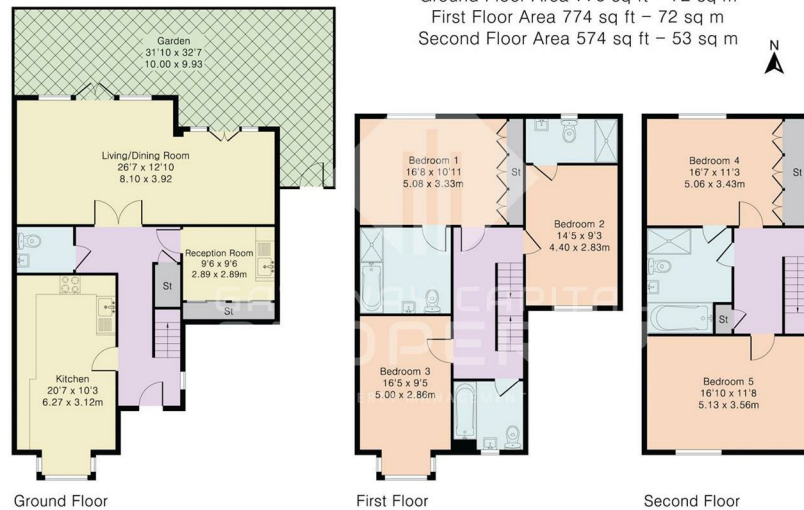
- 5 Bedroom Semi-detached house in a quiet cul-de-sac
- Private front and rear garden
- Integrated appliances and separate utility room
- Fitted wardrobes by Neatsmith
- Close to Mill Hill East Station
- Full finished by Laura Ashley

## THE PROPERTY

A modern and spacious 5 bedroom, 4 bathroom, 2 reception semi-detached house in a quiet cul-de-sac with private garden in the well sought after Mill Hill area.

The property is conveniently located close to amenities in Mill Hill, with a selection of excellent schools nearby.

Approximate Gross Internal Area 2124 sq ft – 197 sq m  
 Ground Floor Area 776 sq ft – 72 sq m  
 First Floor Area 774 sq ft – 72 sq m  
 Second Floor Area 574 sq ft – 53 sq m



## SITUATION

## Directions