



GATEWAY CAPITAL
PROPERTY
LONDON'S PROPERTY MANAGEMENT SPECIALIST

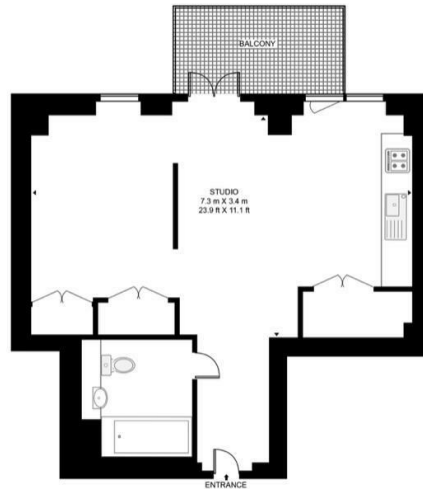
TO LET

£450,000



- Moments from Whitechapel station
- 3 minutes to Canary Wharf, 2 minutes to Liverpool street and 10 minutes to Bond stree
- 24-hour concierge
- Residents' gymnasium and spin room, Residents' cinema
- Private landscaped gardens, Private outdoor space to all apartments

JACQUARD POINT, THE SILK DISTRICT
APPROXIMATE GROSS INTERNAL FLOOR AREA 416 SQ.FT (38.7 SQ.M)



Directions

THE PROPERTY

An immaculately presented one bedroom apartment in the sought-after Silk District development.

The Jacquard Tower extends to 21 storeys, all apartments are finished to a high specification with terrazzo effect tiling to living areas and bathrooms, natural oak effect cabinets to kitchens and in-built wardrobes to master bedrooms. Residents will enjoy access to luxury on-site facilities including a gym and spin room, residents lounge and flexible workspace, landscaped roof-top gardens, private cinema and 24-hour concierge.

This flat spans a total of 486 square feet with an east facing balcony, complete with comfort-cooling, independently-zoned underfloor heating and ventilation system.

The Silk District is a new development located moments from Whitechapel Station and within walking distance to the City. The new Crossrail line will mean The Silk District is only 3 minutes to Canary Wharf, 2 minutes to Liverpool street and 10 minutes to Bond street making it perfectly situated for the daily commute.

The Whitechapel is a great home for financial workers who want a quick commute to the City or Canary Wharf and entrepreneurs looking for a short bike ride to Old Street's tech hub. It also attracts the fresh energy of artists and small business owners, while retaining the character and community of one of London's most historic neighbourhoods.

SITUATION