

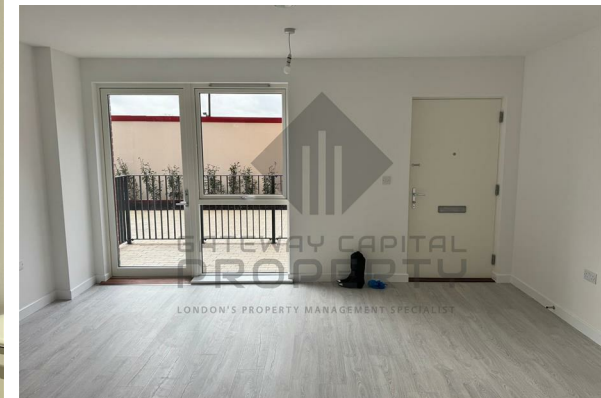


**GATEWAY CAPITAL
PROPERTY**

LONDON'S PROPERTY MANAGEMENT SPECIALIST



TO LET



£2,100 Per month

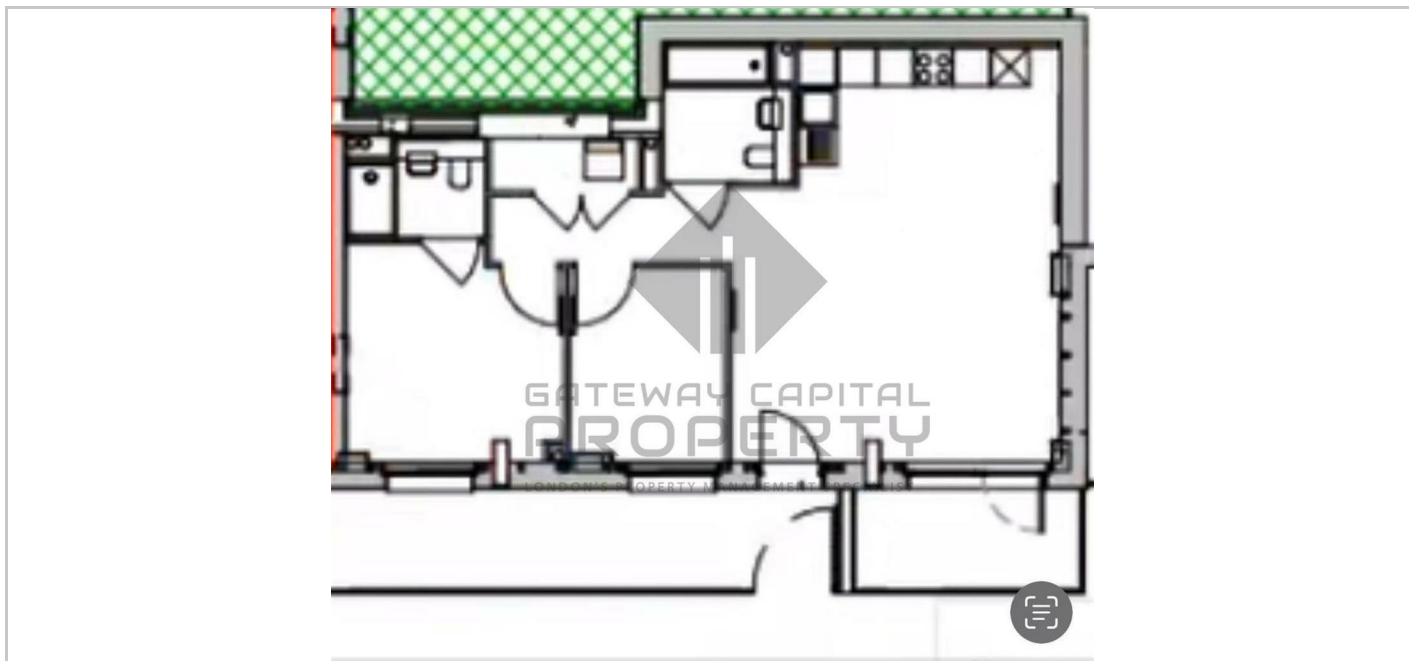
- Brand new 2 bedroom, 2 bathroom flat
- Ground floor, with 2 large terraces
- Reach Paddington in 20 minutes via train
- On-site residents' gym & running track
- Over 9 acres of green space

THE PROPERTY

Situated next to the Grand Union Canal, Hayes Village is a brand new community, providing a world of convenience right on your doorstep.

Enjoy on-site amenities, including a residents' gym, planned café and running track. Located only 8 minutes away by foot is the Elizabeth Line, giving you faster connections to the city.

Live amongst 9-acres of green open space and experience waterside living.



SITUATION

Directions